

**DESCRIPTION OF ACCESS EASEMENT
PROPERTY BELONGING TO HENRY N. ACHENBACH &
AUDREY L. ACHENBACH
THROUGH NORTHAMPTON COUNTY TAX PARCEL U.P.I. No. F9-6-4
IN FAVOR OF U.P.I. No. F8-18-3
PLAINFIELD TOWNSHIP, NORTHAMPTON COUNTY, PA**

Beginning at a set concrete monument marking a common corner to land now or formerly belonging to Henry N. Achenbach and Audrey L. Achenbach, having Uniform Parcel Identifier Number F8-18-3, and other land now or formerly belonging to said Henry N. Achenbach and Audrey L. Achenbach, having Uniform Parcel Identifier Number F9-6-4, said monument being the following four courses and distances from a found concrete monument marking the northwest corner of land now or formerly belonging to Leroy and Marilyn Lieberman:

- 1) Thence along land now or formerly belonging to Richard and Nancy Lieberman South 78 Degrees 38 Minutes 51 Seconds West 702.03 feet to a point;
- 2) Thence along land now or formerly belonging to said Richard and Nancy Lieberman North 81 Degrees 36 Minutes 09 Seconds West 671.55 feet to a point;
- 3) Thence along other land now or formerly belonging to Henry N. Achenbach and Audrey L. Achenbach, having Uniform Parcel Identifier Number F8-18-3, North 06 Degrees 10 Minutes 01 Second West 932.47 feet to a set concrete monument;
- 4) Thence along same North 56 Degrees 10 Minutes 01 Second West 247.50 feet to a set concrete monument, the place of beginning;

Thence along land now or formerly belonging to said Henry N. Achenbach and Audrey L. Achenbach, having Uniform Parcel Identifier Number F8-18-3, (L1) North 18 Degrees 55 Minutes 01 Second West 33.04 feet to a point; thence through other land now or formerly belonging to said Henry N. Achenbach and Audrey L. Achenbach, having Uniform Parcel Identifier Number F9-6-4, the following fourteen courses and distances:

- 1) (L2) South 56 Degrees 10 Minutes 01 Second East 138.22 feet to a point of curvature;
- 2) (C1) On a curve to the left, having a radius of 175.00 feet, a central angle of 79 Degrees 18 Minutes 59 Seconds, a length of 242.26 feet, and a chord bearing and

distance of North 84 Degrees 10 Minutes 30 Seconds East 223.37 feet to a point of tangency;

- 3) (L3) North 44 Degrees 31 Minutes 00 Seconds East 181.84 feet to a point;
- 4) (L4) North 47 Degrees 21 Minutes 16 Seconds East 7.93 feet to a point;
- 5) (L5) North 88 Degrees 18 Minutes 16 Seconds East 10.89 feet to a point;
- 6) (L6) North 00 Degrees 02 Minutes 00 Seconds East 9.70 feet to a point;
- 7) (L7) North 47 Degrees 21 Minutes 16 Seconds East 63.44 feet to a point;
- 8) (L8) South 34 Degrees 28 Minutes 46 Seconds East 4.80 feet to a point;
- 9) (L9) North 54 Degrees 05 Minutes 03 Seconds East 24.27 feet to a point;
- 10) (L10) North 34 Degrees 28 Minutes 46 Seconds West 7.67 feet to a point;
- 11) (L11) North 47 Degrees 21 Minutes 16 Seconds East 194.07 feet to a point of curvature;
- 12) (C2) On a curve to the right, having a radius of 540.00 feet, a central angle of 26 Degrees 01 Minute 19 Seconds, a length of 245.25 feet, and a chord bearing and distance of North 60 Degrees 21 Minutes 56 Seconds East 243.15 feet to a point of tangency;
- 13) (L12) North 73 Degrees 22 Minutes 35 Seconds East 769.41 feet to a point of curvature;
- 14) (C3) Thence through same on a curve to the left having a radius of 30.00 feet, a central angle of 84 degrees 49 minutes 55 seconds, a length of 44.42 feet, and a chord bearing and distance of North 30 Degrees 57 Minutes 38 Seconds East 40.47 feet to a point in the westerly right-of-way line of State Route 1011, known as Pen Argyl Road;

thence along the westerly right-of-way line of said State Route 1011, running parallel to and 20.00 feet west of the centerline thereof, the following two courses and distances

- 1) (C4) On a curve to the right having a radius of 1,530.00 feet, a central angle of 02 degrees 44 minutes 10 seconds, a length of 73.06 feet, and a chord bearing and distance of South 10 Degrees 05 Minutes 15 Seconds East 73.05 feet to a point;
- 2) (L13) South 08 Degrees 43 Minutes 10 Seconds East 19.02 feet to a point; thence, again, through land now or formerly belonging to Henry N. and Audrey L.

Achenbach, having Uniform Parcel Identifier Number F9-6-4, the following five courses and distances;

- 1) (C5) On a curve to the left having a radius of 30.00 feet, a central angle of 97 degrees 54 minutes 15 seconds, a length of 51.26 feet, and a chord bearing and distance of North 57 Degrees 40 Minutes 17 Seconds West 45.25 feet to a point of tangency;
- 2) (L14) South 73 Degrees 22 Minutes 35 Seconds West 758.64 feet to a point of curvature;
- 3) (C6) On a curve to the left having a radius of 510.00 feet, a central angle of 26 degrees 01 minute 19 seconds, a length of 231.63 feet, and a chord bearing and distance of South 60 Degrees 21 Minutes 56 Seconds West 229.64 feet to a point of tangency;
- 4) (L15) South 47 Degrees 21 Minutes 16 Seconds West 304.02 feet to a point;
- 5) (L16) South 44 Degrees 31 Minutes 00 Seconds West 340.86 feet to a point;

thence partly through land now or formerly belonging to the aforementioned Henry N. Achenbach and Audrey L. Achenbach, having Uniform Parcel Identifier Number F9-6-4, and partly along land now or formerly belonging to the aforementioned Henry N. Achenbach and Audrey L. Achenbach, having Uniform Parcel Identifier Number F8-18-3, (L17) North 56 Degrees 10 Minutes 01 Second West, passing a set concrete monument at 36.24 feet, a distance of 283.74 feet to a set concrete monument, the place of beginning.

Containing 60,221 square feet, or 1.3825 acres.

The above described Easement being as shown on a plan entitled "Access Easement Through Tax Parcel F9 6 4" as prepared by Stateline Engineering LLC., Civil Engineers & Land Surveyors, Bangor PA, being Drawing # B-23-498, dated October 4, 2023.

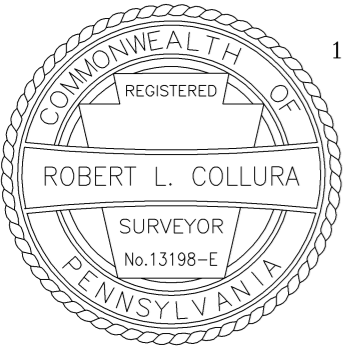
Being part of the same premises which Henry N. Achenbach and Audrey L. Achenbach did, by Deed dated October 22, 2018, and recorded in the Office of the Recorder of Deeds in and for Northampton County at Easton, Pennsylvania in Deed Book 2022-1, page 44925, grant and convey unto Henry N. Achenbach and Audrey L. Achenbach.

October 2, 2023

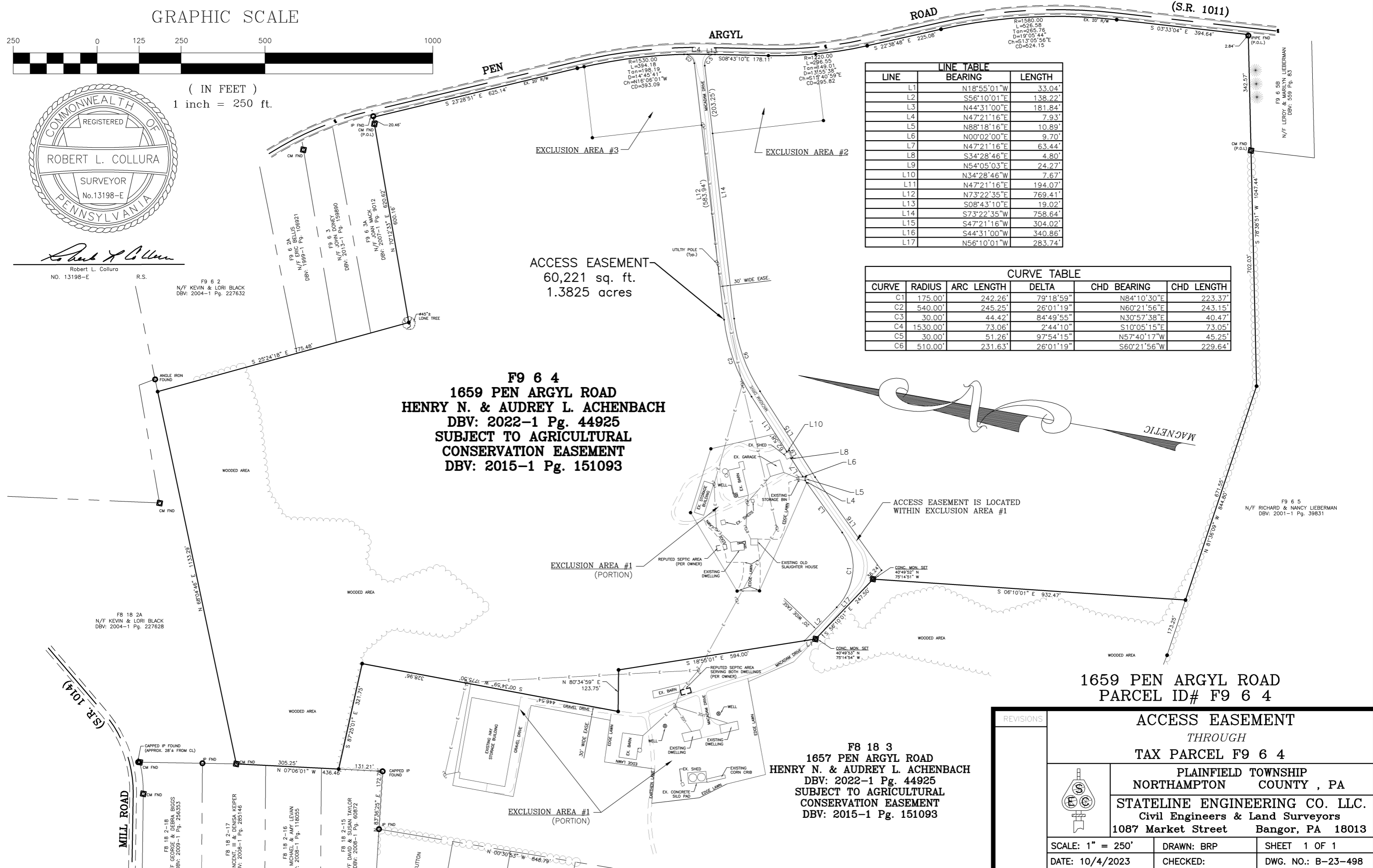
GRAPHIC SCALE



(IN FEET)
1 inch = 250 ft.



Robert L. Collura
No. 13198-E



LINE	BEARING	LENGTH
L1	N18°55'01"W	33.04'
L2	S56°10'01"E	138.22'
L3	N44°31'00"E	181.84'
L4	N47°21'16"E	7.93'
L5	N88°18'16"E	10.89'
L6	N00°02'00"E	9.70'
L7	N47°21'16"E	63.44'
L8	S34°28'46"E	4.80'
L9	N54°05'03"E	24.27'
L10	N34°28'46"W	7.67'
L11	N47°21'16"E	194.07'
L12	N73°22'35"E	769.41'
L13	S08°43'10"E	19.02'
L14	S73°22'35"W	758.64'
L15	S47°21'16"W	304.02'
L16	S44°31'00"W	340.86'
L17	N56°10'01"W	283.74'

CURVE	RADIUS	ARC LENGTH	DELTA	CHD BEARING	CHD LENGTH
C1	175.00'	242.26'	79°18'59"	N84°10'30"E	223.37'
C2	540.00'	245.25'	26°01'19"	N60°21'56"E	243.15'
C3	30.00'	44.42'	84°49'55"	N30°57'38"E	40.47'
C4	1530.00'	73.06'	2°44'10"	S10°05'15"E	73.05'
C5	30.00'	51.26'	97°54'15"	N57°40'17"W	45.25'
C6	510.00'	231.63'	26°01'19"	S60°21'56"W	229.64'

F9 6 4
1659 PEN ARGYL ROAD
HENRY N. & AUDREY L. ACHENBACH
DBV: 2022-1 Pg. 44925
SUBJECT TO AGRICULTURAL
CONSERVATION EASEMENT
DBV: 2015-1 Pg. 151093

ACCESS EASEMENT
60,221 sq. ft.
1.3825 acres

1659 PEN ARGYL ROAD
PARCEL ID# F9 6 4

F8 18 3
1657 PEN ARGYL ROAD
HENRY N. & AUDREY L. ACHENBACH
DBV: 2022-1 Pg. 44925
SUBJECT TO AGRICULTURAL
CONSERVATION EASEMENT
DBV: 2015-1 Pg. 151093

REVISIONS	ACCESS EASEMENT	
	THROUGH TAX PARCEL F9 6 4	
	PLAINFIELD TOWNSHIP NORTHAMPTON COUNTY, PA	
	STATELINE ENGINEERING CO. LLC. Civil Engineers & Land Surveyors 1087 Market Street Bangor, PA 18013	
SCALE: 1" = 250'	DRAWN: BRP	SHEET 1 OF 1
DATE: 10/4/2023	CHECKED:	DWG. NO.: B-23-498