

Public Auction

(12) Trucks • (9) Trailers • JD & Case IH Tractors
Steiner 450 • (4) Bobcat Skid loaders • Bobcat MT85 & E32
(12) Exmark Mowers • Vermeer Chipper • Finn Bark Blower
Snowblowers, Pushers & Blades • Saws • Trimmers • Blowers
Saturday July 15 @ 8:00 AM

2535 Round Top Road Middletown, PA 17057 - Dauphin Co.



Directions: Route 283 Exit 7 to North on Tollhouse Rd, right onto Colebrook Rd, Left onto Schoolhouse Rd, to Right onto Roundtop Rd to auction on Right.



Trucks: '12 F-550 Super Duty diesel crew cab truck, 119K miles, 4-WD, 12' Knapheide dump body w/ elec. tarp; '10 F-550 diesel crew cab truck, 122K miles, 4-WD, 9' SH steel dump body, combo gate, 24" alum. cross box; (2) '10 F-250XL Super Duty crew cab diesel trucks, 129K & 143K miles, 4-WD; (2) '09 F-250XL Super Duty Crew cab diesel trucks, 4-WD, 104K & 112K miles; '05 Mitsubishi Fuso 4-door diesel truck, 106K miles, w/ 12' chipper box & 24" cross box, '03 F-250XL Super Duty extended cab diesel truck, (needs head gasket) 4-WD, Leer topper, w/ 7.5' Meyer snow blade; '00 F-350 Super Duty diesel extended cab truck, 4-WD, 195K miles, 8.5' Alum flatbed; '96 Super Duty XLT 7.3 diesel truck 115K miles, Hewey 11' alum. dump body w/ side & rear gates; '99 Chevy 2500 4-WD truck 255K miles w/ alum toolbox; '09 Ford Escape 148K miles 4-WD;



Trailers: '16 Nexhaul 24' enclosed 10K trailer w/ ramp gate; '14 Victory 16' enclosed 10K trailer w/ torsion axles & ramp gate; '13 Victory 20' enclosed 10K trailer w/ ramp gate; '13 International 10K trailer 18' w/ ladder ramps, electric brakes; '12 Sure-Trac 12K dump trailer, 12' long, combo gate, slide in ramps, tarp; '07 Pequea 10K dump trailer, 12' long, combo gate; '12 Pequea 18' flatbed trailer 7K w/ landscape ramp; '98 Atlantic 18' flatbed trailer 10K w/ 6' ladder ramps; Metal Fab 12' landscape trailer 2990lbs; misc ball hitches;



Tractors, & Equipment, Skidloaders, & Excavator: John Deere 6330 tractor 2375 hours CHA, LH reverser, power quad, 2-remotes w/ 24' Tiger 3-section flail mower; Case IH JX1095C tractor CHA, 4-WD, 2400 hours, 2-remotes, 12-speed, 35MPH road gear, LH reverser w/ Case IH L720 loader; Steiner 450 tractor w/ 72" front deck, duels, 300 hours (**very nice**); '13 Bobcat E32 mini excavator w/ 24" bucket, thumb, swing boom, 1094 hours (**nice**); '16 Bobcat MT85 mini track loader, 860 hours (**1-owner very nice**); '16 Bobcat S740 skidloader, 735 hours, 2-speed, CHA Hyd Q-tach; '15 Bobcat S590 skidloader, 319 hours, 2-speed, CHA, Hyd Q-tach; '16 Bobcat S530 skidloader, 304 hours, 2-speed, CHA, Hyd Q-tach; '14 Bobcat S530 2-speed, CHA; Finn BB302-19 Bark Blower w/ Kubota V1505D engine, 100' 4" hose, pintle hitch; '15 Vermeer BC 1000XL chipper w/ 89 HP PSI engine; Bush Hog 2615L Legend batwing mower; Country Line 6ft tiller; 12" & 18" excavator buckets;



Skidloader Attachments: Virnig VBW72-25 72" hyd. snow blower (**new**); '14 Bobcat SB 200 hyd 60" snow blower; McMillen X1975 Auger; 8", 12", 24" & 36" auger bits; Quick Attach 6' rake/root grapple; (2) 84" Virnig material buckets; (2) 68" material buckets; 48" pallet forks; fork extensions.

Mini Attachments: '19 Bobcat SG30 stump grinder; '20 Bobcat LT113 trencher; '16 Bobcat SB 150 2-stage hyd. 48" snow blower; Quick Attach 48" Harley Rake/Soil Conditioner; material bucket; pallet forks.

Mowers: (2) Exmark Lazer Z S-series 60" Z-turn mower 830 hours; ExMark Lazer X-series 60" Z-turn mower 1225 hours; (4) ExMark Lazer Z 60" zero-turn mowers 2125-3800 hours; Exmark S-series 52" w/ dolly; (4) Exmark 48"-52" turf tracer mower w/ dollies; Hustler Hyperdrive Z-turn 60" mower; misc. bagger attachments; (3) walk behind push mowers; misc mower blades & belts.

All information is deemed to be accurate but not guaranteed.



BEILER-CAMPBELL
AUCTION SERVICES



AY# 002026

www.beiler-campbellauctions.com • 888-209-6160

Auctioneers:

Harold Martin (717) 738-4228 AA#019488

Christ Taylor (717) 371-1915 AU#005421

Noah Shirk (717) 354-0192 AU#005928

Seller: William Pfundheller (717) 209-1883



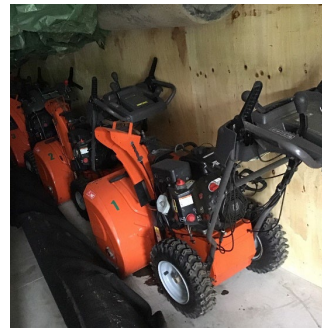


Snow Removal: (2) Western MVP 8 1/2ft V-plows; 8ft snow plow; Avalanche 10' & 8' snow pusher w/ back drag; (9) skid loader mount hyd angle, back drag blades 7-9' wide, shop made (never used); Salt Dog & Fisher truck bed electric salt spreaders; (6) Husqvarna ST230P, 1-ST227P, 1-ST224, 1-10527SB snow blowers; (2) Snapper L1226E Snow plowers; Ariens ST524 snow blower; Troy-Bilt 26" snow blower; (5) Snapper single stage snow blowers; Buyers hitch mount spreader; atv blades; push spreaders; 30+ snow shovels;

Power Tools: (12) Echo BP-770 backpack blowers (**most 1 year old**); (**5-used 1-new**) Echo HC-2020 hedge trimmers; (4) Echo HCA-2620 hedge trimmers; (17 used 3-new) Echo SRM-2620T and other models string trimmers; Echo CSG-7410 concrete saw w/ diamond blade; Honda 7000W generator; Stihl MS291 (**new**) chain saw; Stihl 462C chain saw; (3) Echo CS-355T (**2-new**) chain saws; (**2-used 1-new**) Echo CS-400 chain saws; Stihl HT131 (**new**) pole chain saw; Echo PB-2620 (**new**) hand held blower; (2) Predator gas powered earth augers; Homelite wood splitter; Bel-Aire compressor; 36" shop fan; rolls string trimmer line;

Misc: Suzuki Kingquad 4-wheeler 2260 miles w/ 20 gal spot sprayer; Polaris Sportsman Twin 850 4-wheeler w/ 20 gal 12V spot sprayer (2) Gregson-Clark 200 gal. sprayer units w/ Honda GX160 engines w/ Hypro pumps & approx. 200 ft hose; Maxim Extra HD Comm. rear tine tiller w/ Honda GX200 engine; Craftsman mini tiller; Bed Edger F-781H w/ 8-HP Honda; Blue Bird bed edger; Dynapac LF75 plate tamper; jumping jack tamper; Little Wonder leaf Vac w/ hoses & chute w/ Honda engine; Troy-Bilt CSV206 chipper/shredder/vac; 325 gal poly tank; steel & alum fuel tanks w/ 12V pumps; Honda WX10T transfer pump; back pack pump sprayers; 12 rolls Curlex wood fiber erosion control 8' x 112.5'; Bosch GRL 300HV laser level; roll approx. 275' x 12' landscape fabric; galv. pallet racking; tree cart; 2' & 3' lawn rollers; lawn trailers; 15 wheelbarrows; 10 new Stihl leaf rakes; lots hand tools as landscape & leaf rakes, brooms, flat, ditch & dirt shovels, digging irons, post hole diggers, pruners, chains, binders, straps & ratchets; misc PVC pipes; 200+ driveway stakes; cones; forming pins; Hot Dawg style propane heater; Reddy Heater; step & ext ladders; trailer ramps; hard hats; trash cans; gas cans; air tanks; (13) full cases Echo oil mix; office desk; conference table & chairs; file cabinets; 30+ new trailer & mower rims & tires; new set skidloader tires;

Auctioneers Notes: A very large number of items. Business has closed and all items must go. Selling with several auctioneers. Bring a friend. Online bidding available for large items. See Beiler-Campbell website for details. All information is deemed to be accurate but not guaranteed.



For additional pictures go to www.beiler-campbellauctions.com or www.GoToAuction.com or www.auctionzip.com

