

WHALEN 
REALTY & AUCTION, LTD.

Terms

Terms: \$10,000.00 down in certified funds w/balance at closing. Closing held on or before 45 days. Have finances ready, selling with immediate confirmation, as is where is." No Buyer's Premium. Possession upon removal of crop. Seller to retain 2024 cash rent. All information was derived from sources believed to be correct but not guaranteed. Dimensions are approximate. Buyers need to rely entirely on their own judgement and inspections of property records. Announcements made the day of the auction take precedence over printed materials.

62.18+/- Acres Tillable

Auction

Putnum County, Van Buren Township

Wednesday, August 21th, 11:00 AM

70.54+/- Acres

07

Co Rd 6

665.6'

70.54 Acres

679.4'

1,943.4'

08

RD 5-B
Co Rd 5B

Co Rd C

Auction will be held at:

American Legion
815 E Mathias St.
Leipsic, OH 45856

WHALEN 
REALTY & AUCTION, LTD.

WHALEN REALTY & AUCTION, LTD.
Auctioneers: John & Jason Whalen, Mike Murry
419-875-6317, 419-337-7653 www.whalenauction.com
Information herein deemed reliable but not guaranteed

Parcel Information

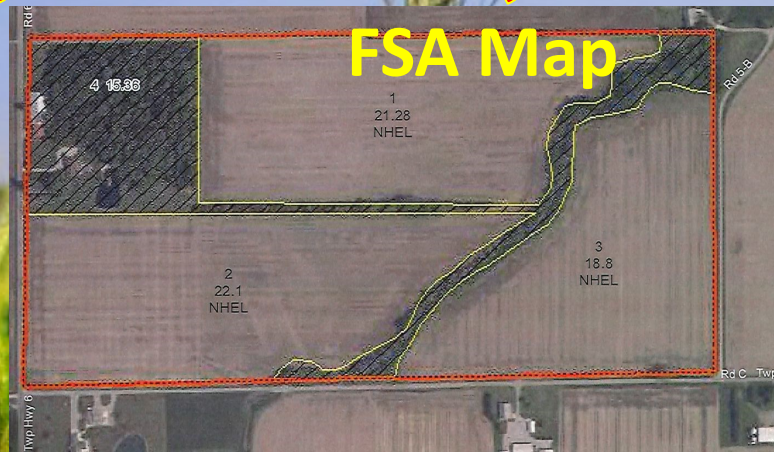
Parcel 59-011020.000
70.54 Acres
874' Co Rd 6
2,637.6 Co Rd C
1,291.3 Co Rd 5B
Half Yr Taxes \$1,001.33
Leipsic Schools

Farmland Auction

Wednesday, August 21st, 11:00 AM

WHALEN 
REALTY & AUCTION, LTD.
PO Box 550
Neapolis, OH 43547

Crop	Base	Yield
Wheat	21.09	44
Corn	20.70	142
Soybean	20.39	32
Total	62.18	



62.18 +/- Acres
Tillable

Owner: Charles T Howard & Judith E Howard, Trustees
& Roberta Howard

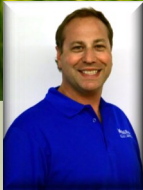
Auctioneers



John Whalen



Michael Murry



Jason Whalen

Auction will be held at:

American Legion
815 E Mathias St.
Leipsic, OH 45856

419.875.6317 419.337.7653

See whalenauction.com For Upcoming Auctions!

