

REAL ESTATE-Tool-Household AUCTION

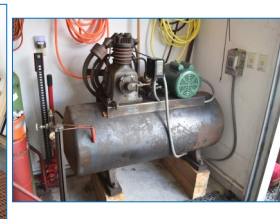
Wednesday July 31, 2024 @ 4pm.

23439 W. St Rt 65 (River Rd.), Grand Rapids OH 43522

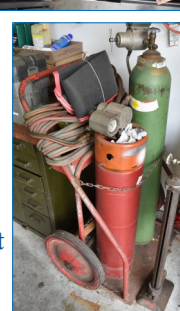
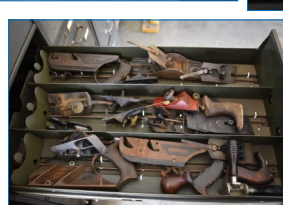
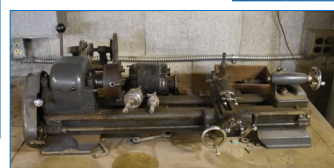
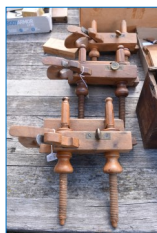
Direct River Access & View Located Just East of Grand Rapids Bridge

Real Estate offered 1st followed by contents

Truck, Trailers, Mowers: 2004 Ford F150 5.4 liter, super cab long bed w/Lear cap, 270,317 miles, One Owner!; Wells Cargo enclosed trailer, 10'x 6' single axle, 2 5/16" ball, rear barn door; 6 1/2' x 10' single axle utility trailer, ramp gate, 2 5/16" ball; John Deere 318 lawn tractor 2063 hrs, 54" deck, Onan engine; John Deere 318 lawn tractor 720 hrs, New Vanguard 23 hp engine in 2023 with mounted grass catcher & front weights; **Antique Tools:** Ohio tools plow plane; Auburn Tool Co. plow plane; 2 Stanley No.45 planes w/box and extra knives; Barrett molding plane; 100+ chisels, slicks, carving tools; auger bits; Stanley No.7 hand router; lathe tools; Winchester 3010 plane; Keen Kutter plane; 30+ molding planes; Sandusky Tool Ohio rosewood plow plane parts; Keen Kutter pipe wrench; plane parts, knives, wedges, handles and more. **Tools:** tow behind sprayer gas log splitter w/boom crane; lawn spreaders; Stihl FS 56 RC trimmer; 5 McCulloch chainsaws; stick tools; bottle jacks; crescent wrenches; Dayton 1hp 10" bench grinder w/stand; Wilton 5" bench vise; Emmert MFC 6 way vice; Metabo angle grinder; woodworking bench 100" x 30" 34"T; DeVilbiss Co. air compressor; torch set; Craftsman 12: bandsaw; extension cords; appliance cart; Makita 12" miter saw w/Rousseau stand; miter saw stand; Grizzly dust collector; Delta 12" planer 2hp; Milwaukee cut off saw; tool display racks; C-clamps; chains; steel legs in shape of legs 30"; belt drive lathe; nail boxes; 48" John Deere snow blow for front of tractor; Lincoln Ideal arc 250 welder; Napa battery charger; steel workbench; Toledo stools; organizers; Delta oscillating sander; Delta scroll saw; grinder w/stand; Fisher #2 anvil; pressure washer; Craftsman 101 metal lathe;



WHALEN **WHALEN**
REALTY & AUCTION, LTD.



Terms: Cash or check w/I.D, 3% processing fee on cards. Lunch by Sandy's.
Order of Sale: Selling in 2 rings, 1 selling antique tools while another sells power tools & misc. Truck, trailers & mowers selling at 5pm.



Owners: Jeffers Living Trust
Lisa Bain & David Jeffers
Co. Trustees

Auctioneers: John & Jason Whalen, Mike Murry
419-875-6317, 419-337-7653

whalenauction.com