



Yale Model G3V-200-FAS-G Yard Forklift



Grove 10 Ton Mobile Yard Crane



Clark 25,000 Lb. Fork Lift

**MISCELLANEOUS MACHINERY**

- **Brown & Sharpe** 618 Micromaster 2-Axis Hydraulic Surface Grinder, s/n 523-6181-8472, 6" X 18" Electric Chuck with Controls, Coolant
- **Parker** Model 232P Power Flaring Machine, s/n 2611, 110/1/60 AC, Large Quantity of Dies
- **Burr King** Model 760 Belt Sander with Stand, 110/1/60
- **J.A. Richards** Steel Rule Die Machinery
- **Lockformer** 16 Gauge Pittsburgh Roll Former
- **Ridgid** Model 1224 Pipe Threader, s/n 100853, (3) Die Heads, Pipe Cut Off, Pipe Reamer, Foot Pedal Control, 110/1/60
- **Oster** Model 784 Pipe and Bolt Threader, s/n 784-XZ-704, Pipe Cap 1/2"-4", Bolt Cap 3/8"-3"
- **Greenlee** Model 855 Smart Quad Bender, s/n ABL2978TH, 1/2" thru 2" Conduit Capacity, 110/1/60
- **Parker** Model 832 Hydraulic Pipe Bender, s/n 441, Greenlee Hydraulic Power Unit, Tooling and Cart, 110/1/60
- **Teledyne** Model 832 Hydraulic Pipe Bender, s/n 1663, Greenlee Hydraulic Power Unit, Tooling and Cart, 110/1/60

**WELDERS AND PLASMA CUTTERS**

- **Miller** Synchrowave 350LX Tig Welder, s/n LB294456, with Built in Chiller, Torch Ground Cable, Regulator, and Foot Pedal Control, 200/230/1/60 (Single Phase)
- **Miller** Synchrowave 351 Tig Welder, s/n KH562521, with Miller Coolmate 4 Chiller, Torch, Ground Cable, Regulator, and Foot Pedal Control, 200/230/460/1/60 (Single Phase)
- **Miller** Synchrowave 351 Tig Welder, s/n KJ096309, with Miller Coolmate 4 Chiller, Torch, Ground Cable, Regulator, and Foot Pedal Control, 200/230/460/1/60 (Single Phase)

**WELDERS AND PLASMA CUTTERS - CONTINUED**

- **Miller** Deltaweld 452 Mig Welder, s/n KK163118, with Miller 60 Series Wire Feeder and Mig Gun, 230/460/3/60, and Miller XR-A Extended Reach Wire Feeder, s/n KG285465
- **Miller** Deltaweld 302 Mig Welder, s/n LA126555, with Miller 60 Series Wire Feeder and Mig Gun, 230/460/3/60
- **Miller** Deltaweld 302 Mig Welder, s/n LA081717, with Miller 60 Series Wire Feeder and Mig Gun, 230/460/3/60
- **Miller** Pulstar 450 Mig Welder, s/n JD676406, with Miller S-52E Wire Feeder and Mig Gun, 230/460/3/60
- **Esab** PCM-875 Plasma Cutter, s/n EN50192, 460/3/60, With Cart
- **Hypertherm** Max 43 Plasma Cutter, s/n 071044-MX43-006122, 110/208/240/1/60 (Single Phase)

**TOOLING, ACCESSORIES, SHOP SUPPORT ITEMS**

- Mills, Drills, Reamers, Taps, Dies, 40 Taper CNC Holders, CNC Collets, Vises, Clamps, Saw Blades, Abrasives, Grinding Wheels, 40 and 50 Taper Holders, Collets, Welding Tables, Welding Accessories, Hand Tools, Power Tools, Air Tools, Mag. Based Drills, Hardware, Maintenance Items, 4-Way Press Brake Die, Misc. Press Brake Dies, Large Quantity Lifting Chain, Rotary Tables, Angle Plates, Set-Up Blocks, Tool Cabinets, Man Lift Baskets, PTO Tractor Attachments, Spreader Bars, Sheet Lifters, Bottle Jacks, C-Clamps, Enerpac Hydraulic Pumps/Cylinders, Sanders, Pedestal Grinders, Drill Presses, Hydraulic Items, Electrical Items, Many Additional Items

**Auction Date:**  
**THURS., DEC. 7,**  
**9:00 AM ET**

**THOMPSON Auctioneers, Inc.**  
937-426-8446 • [thompsonauctioneers.com](http://thompsonauctioneers.com)

**INSPECTION:** Wednesday, December 6, 9:00 am - 4:00 pm ET.

**ONLINE AUCTION:** To place bids, go to [thompsonauctioneers.com](http://thompsonauctioneers.com) or [bidspotter.com](http://bidspotter.com). There is no onsite bidding. Bidders must pre-register 24 hours before bidding.

**TERMS:** A 18% Buyer's Premium in effect for this auction. Everything is selling on an "As Is, Where Is, In Place" basis with NO Warranties or Guarantees of any kind. It is the buyers responsibility to inspect before bidding. All Invoices must be paid within 48 hours of the conclusion of the auction. Payment may be made with Cash, Company Check, Wire Transfer, Visa, MC, Discover, or American Express. An additional 3% convenience fee will be collected for Credit Card purchases. Removal is the Buyers Responsibility, Expense and Risk.

For Bidding & Registration go to: [www.thompsonauctioneers.com](http://www.thompsonauctioneers.com) or [www.bidspotter.com](http://www.bidspotter.com)



For pre-approval financing options, call Casey Goodell, Direct Capital, at 603-766-9365.



WITH LIVE ONLINE BID-CALLING

**PAINTER DESIGN CO., INC.**

37230 26 Mile Road, New Baltimore, MI 48047

**Auction Date:**  
**THURS., DEC. 7,**  
**9:00 AM ET**



Cincinnati 230CB X 10 Hydraulic Press Brake

**THOMPSON Auctioneers, Inc.**  
3519 St. Rt. 235  
Fairborn, Ohio 45324

Pre-Sort First Class  
U.S. POSTAGE  
**PAID**  
Dayton, Ohio  
Permit No. 543

**LIVE ONLINE AUCTION**

WITH LIVE ONLINE BID CALLING

**PAINTER DESIGN CO., INC.**

37230 26 Mile Road, New Baltimore, MI 48047

**THURSDAY, DECEMBER 7, 9:00 AM ET**

**Inspection: Wednesday, December 6, 9:00 AM - 4:00 PM**

**FEATURING:**

- Cincinnati 230CB X 10 Hydraulic Press Brake
- Pacific 1/2" X 10' Hydraulic Shear
- Mitsubishi 3015 LZP CNC Laser • Plate Rolls • Angle Rolls
- 10+ Miller Welders • Mills • Lathes • Grinders • Saws • Davis Keyseater
- Sky Trak MMV Telehandlers • Electric Forklifts • Yale 30,000 Lb. Forklift
- Clark 23,000 Lb. Forklift • Grove Carry Deck Crane
- Many Additional Items plus Tooling • Large Quantity Gaging & Inspection



**THOMPSON Auctioneers, Inc.**

Steve Thompson, Auctioneer • Ohio License #63199566109  
937-426-8446 • [www.thompsonauctioneers.com](http://www.thompsonauctioneers.com)



Sky Trak Model MMV Telehandler



Pacific Model 500R-10 Hydraulic Plate Shear

**LIVE ONLINE AUCTION**

WITH LIVE ONLINE BID-CALLING

**PAINTER DESIGN CO., INC.**

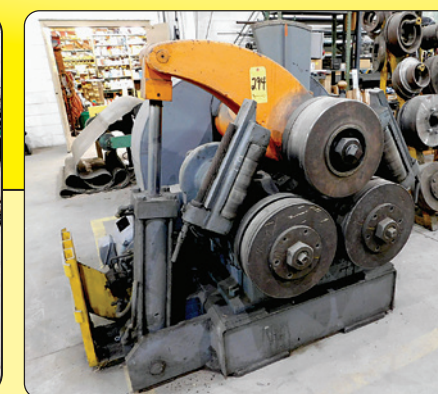
37230 26 Mile Road, New Baltimore, MI 48047

**THURSDAY, DECEMBER 7, 9:00 AM ET**

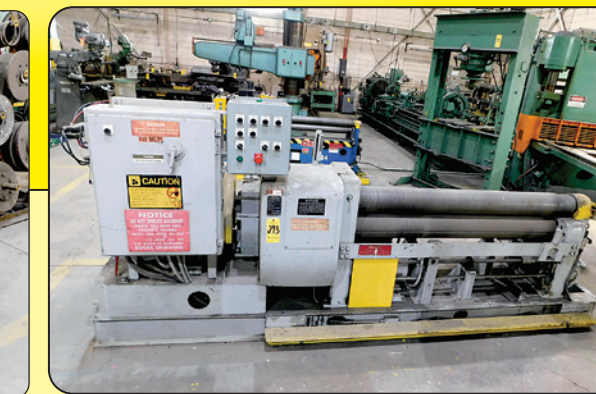
**Inspection: Wednesday, December 6, 9:00 AM - 4:00 PM**



Spartan Model IW110DX/2 Hyd. Ironworker



Buffalo 2VBR Vertical Angle Roll with Dies



Webb Power Initial Pinch Roll, 5' x 1/4"



Mitsubishi 3015 LZP CNC Laser

**FEATURING:**

- Cincinnati 230CB X 10 Hydraulic Press Brake • Pacific 1/2" X 10' Hydraulic Shear • Mitsubishi 3015 LZP CNC Laser
- Plate Rolls • Angle Rolls • 10+ Miller Welders • Mills • Lathes • Grinders • Saws • Davis Keyseater
- Sky Trak MMV Telehandlers • Electric Forklifts • Yale 30,000 Lb. Forklift • Clark 23,000 Lb. Forklift • Grove Carry Deck Crane
- Many Additional Items plus Tooling • Large Quantity Gaging and Inspection

For Bidding & Registration go to: [www.thompsonauctioneers.com](http://www.thompsonauctioneers.com) or [www.bidspotter.com](http://www.bidspotter.com)



**THOMPSON Auctioneers, Inc.**

Steve Thompson, Auctioneer • Ohio License #63199566109  
937-426-8446 • [www.thompsonauctioneers.com](http://www.thompsonauctioneers.com)



# ONLINE ONLY AUCTION

WITH LIVE ON-LINE BID-CALLING



Cincinnati Model 1412 Power Squaring Shear



Cincinnati Model 130-12' Mechanical Press Brake



Fadal 6-Axis CNC Vertical Machining Center



Leblond 18" X 60" Toolroom Lathe

## PAINTER DESIGN CO., INC.

37230 26 Mile Road, New Baltimore, MI 48047

**Auction Date:**  
**THURS., DEC. 7,**  
**9:00 AM ET**

### PRESS BRAKES

- Cincinnati Model 230CB X 10' Hydraulic Press Brake, s/n 47203, 230 Ton, 12' Overall, 10 1/2" Between Housings, 10" Stroke, Palm Buttons and Foot Pedal Control
- Cincinnati Model 130-12' Mechanical Press Brake, s/n 26417, 300 Ton, 14'6" Overall Length, 12'4" Between Housings, 4" Stroke, Mechanical Clutch and Brake, Pitted Bed Plate

### POWER SQUARING SHEARS

- Pacific Model 500R-10 Hydraulic Plate Shear, s/n S10991, 10' X 1/2" Capacity, 8' Squaring Arm, (2) Front Support Arms, 48" Front Operated Power Back Gage, Adjustable Rake Angle
- Cincinnati Model 1412 Power Squaring Shear, s/n 15153, 12' X 3/16" Capacity, 10' Squaring Arm, No Back Gage

### CNC LASER SYSTEM

- Mitsubishi Model ML3015LZP CNC Laser, s/n 1030LZP075, New 2000, Mitsubishi LC20P CNC Control, 2,000 Watt Capacity, (2) 5' X 10' Shuttle Tables, 120" X 60" X 3.5" Travels, Chiller

### HYDRAULIC IRONWORKER

- Spartan Model IW110DX/2 Hydraulic Ironworker, s/n IW110DX-203, 110 Ton, 6" X 6" X 1/2" Angles, Punch Capacity 1 3/8" thru 1" MS, Shear Capacity 1" Thick X 14" Length, 5/8" Thick thru 24" Length, Bar Shear Capacity 1 3/4" Round, 1 3/4" Square, Notcher, Punches and Dies, Dual Foot Pedal Control

### VERTICAL ANGLE ROLL

- Buffalo Model 2VBR Vertical Mechanical Angle Iron Rolls, s/n 61-0587, Capacities: Angle Let Out 5" X 5" X 3/8"; Angle Leg In 3 1/2" X 3 1/2" X 3/8"; Flat Bar on Flat 9" X 1 1/4"; Flat Bar on Edge 4" X 1", Rounds 2 3/4"; Squares 2 1/2", with Assorted Bending Rolls

### POWER INITIAL PINCH ROLLS

- Webb Model R3L-R-7005 Power Initial Pinch Roll, s/n 7830, 5' X 1/4" Capacity, 7" Diameter Rolls, Air Powered Drop End
- Webb Model BR-450 Power Initial Pinch Roll, s/n 2528, 4' X 12 Gauge Capacity, 4.25" Roll Diameter, Air Powered Drop End, Roll Position Indicators



Giddings & Lewis Bickford Chip Master Radial Arm Drill



Greenlee Smart Quad Bender



Marvel Model 81A7/M5 Auto. Tilt Frame Vertical Band Saw



Webb Power Initial Pinch Roll, 4' X 12 Ga.

### CNC VERTICAL MACHINING CENTER

- Fadal Model VMC4020 CNC Vertical Machining Center, s/n 9812196, New 1999, Fadal 88HS CNC Control, 6-Axis, 4th and 5th Axis Trunion Style Rotary Table, 40 Taper, 30 ATC, 40" X 20" X 20" Travels

### HORIZONTAL JIG MILL

- Devlieg Model 43H-72 Spiramic Jig Mill, 4" Spindle, 35" X 72" Table, 36" Vertical Travel, Spindle Travel 20", Table Travel 72", Platen Tracer 16", Accurite D.R.O.

### KEYSEATER

- Hansford Davis Model 15 Keyseater, s/n 15-1481, with (2) Holddown Clamps, 1/16" - 1 1/2" Capacity, 4 1/2" Stroke, 18" Throat, with Cabinet, Tooling, Accessories

### ENGINE LATHES

- Lehmann 28" X 16' Engine Lathe, s/n 5538, 21" 4-Jaw Chuck, Taper Attachment, (3) Steady Rests, Quick Change Toolpost with (4) Toolholders
- Leblond 18" X 60" Toolroom Lathe, s/n 4HD672, 12" 3-Jaw Chuck, 12" 4-Jaw Chuck, Quick Change Toolpost with (6) Tool Holders

### RADIAL DRILLS

- Giddings & Lewis Bickford Chip Master Radial Arm Drill, s/n 952-00221-81, 5' X 11", Adjustable Angle Box Table, Coolant, 5 MT, 40-1,600 RPM
- WEBO Model BR45 Radial Drill, s/n E663, 5' X 14", Box Table, 4 MT, 30-1,260 RPM



Lehmann 28" X 16' Engine Lathe

### PLANER MILL

- Rockford Planer Mill, Bridge Style, with Sundstrand Milling Head, 50 Taper, 6' X 16' T-Slotted Table, Ball Screws, 60" Max. Clearance Under Bridge, 45" Max. Clearance Under Spindle Nose, 15 HP, 3-Axis D.R.O.

### BRIDGEPORT MILLS

- Bridgeport Series I, 2 HP Vertical Mill, s/n BR284307, 9" X 48" Table, Power Table Feed, Accu-Rite Micro Line D.R.O.
- Bridgeport 1 HP, Step Pulley Vertical Mill, s/n 12BR76150, 9" X 42" Table, Mitutoyo D.R.O.

### KEARNEY & TRECKER VERTICAL MILL

- Kearney & Trecker 315/S15 Vertical Mill, s/n 80-1021-03, 15" X 68" Table, 50 Taper, 36" X 12" X 18" Travels

### KEARNEY & TRECKER HORIZONTAL MILLS

- Kearney & Trecker 205/S12 Horizontal Mill, s/n 53-1011-08, 12" X 56" Table, 50 Taper, Arbor Support, 28" X 10" X 18" Travels
- Kearney & Trecker 15HP-3CK Horizontal Mill, s/n 31-6801, 50 Taper, 15" X 64" Table, Arbor Support

### AIR COMPRESSOR

- Kaeser Model Sigma Profile AS30 Rotary Screw Air Compressor, 25 HP, 31,638 Hours

### HORIZONTAL BAND SAW

- DoAll Model C-1213A Fully Automatic Horizontal Band Saw, s/n 412-89354, 1 1/4" Blade, 12" X 13" Capacity



Allis Chalmers 10,000 Lb. Fork Lift



Hyster Model J40XL Electric Forklift



Raymond Model 040-R60TT Stand On Electric Forklift



Genie Model V-1832 Electric Scissor Lift



Moritz Tandem Axle, Dual Tire Gooseneck Trailer



Ford Model 9A Tractor

### VERTICAL BAND SAWS

- Marvel Model 81A7/M5 Automatic Tilt Frame Vertical Band Saw, s/n E-2169, 18" X 22" Capacity
- Jet Model VBS900 Vertical Band Saw, s/n 90100, 36" Throat, 7" Under the Guide
- Roll In Vertical Band Saw, s/n 79372, 110/1/60

### HYDRAULIC PRESSES

- Do-All Model 125PCA Air/Hydraulic H-Frame Shop Press, s/n 139920, 125 Ton Capacity, Foot Pedal Control
- (2) Custom Built 4-Post Hydraulic Presses, Bed Plate 47" L/R X 45" F/B, 36" Stroke, 54" Max. Opening

### TELEHANDLER FORK LIFT

- Sky Trak Model MMV Telehandler, s/n MV114, 11,000 Lb. Capacity, Diesel, 3-Stage Telescoping, Max. Lift Height 42'4", 4-Wheel Drive, Enclosed Cab

### MOBILE YARD CRANE

- Grove Model 810B Pick and Carry Hydraulic Mobile Yard Crane, s/n 64694, 10 Ton Capacity, Gasoline, Outriggers

### YARD FORK LIFTS

- Clark Yard Fork Lift, s/n CHY-2008-15-923-268, 25,000 Lb. Capacity, Gasoline, Pneumatic Tires, Dual Front Tires, 2-Stage Mast, 6' Forks, 5-Speed Manual Transmission
- Yale Model G3V-200-FAS-G Yard Forklift, s/n AG084321, 20,000 Lb. Capacity, Diesel, Pneumatic Tires, Dual Front Tires, 2-Stage Mast, 6' Forks

### FORK LIFTS

- Hyster Model J40XL Electric Forklift, s/n B168V01620H-8166, 4,000 Lb. Capacity, 3-Stage Short Mast, Side Shift, Pneumatic Tires, 42" Forks, with Charger
- Allis Chalmers Model ACC100-L-PS Forklift, s/n ABC86434, 10,000 Lb. Capacity, LP, Hard Tire, 2-Stage Short Mast, 4' Forks
- Raymond Model 040-R60TT Stand On Electric Forklift, s/n 040-94-05097, 6,000 Lb. Capacity, Telescoping Forks, Side Shift, 3,385 Hours showing, with Charger

### SCISSOR LIFTS

- Genie Model V-1832 Electric Scissor Lift, s/n 3689-1658, 18' Max. Platform Height, 750 Lb. Capacity, 576 Hours, Built In Charger
- Electric Scissor Lift, Pneumatic Tire, Runs on 115 Volt Electric and Must be Plugged in to Operate, 4' X 10' Platform

### EQUIPMENT TRAILER

- Moritz Tandem Axle, Dual Tire Gooseneck Trailer, 38' Overall Length, 26' Long Deck, 5' Beaver Tail, 7' Upper Deck, 8' Bed Width, 5' Ramps

### TRACTOR

- Ford Model 9A Tractor, s/n 149682, Gasoline, OROPS

[continued]

**THOMPSON Auctioneers, Inc.**

Thinking of an Auction? Need an Appraisal? Know of a Plant Closure?  
Call 937-426-8446 • www.thompsonauctioneers.com