

AUCTION

Real Estate
Sells @
10:00 A.M.



SATURDAY | JULY 27th | 10:00 A.M.

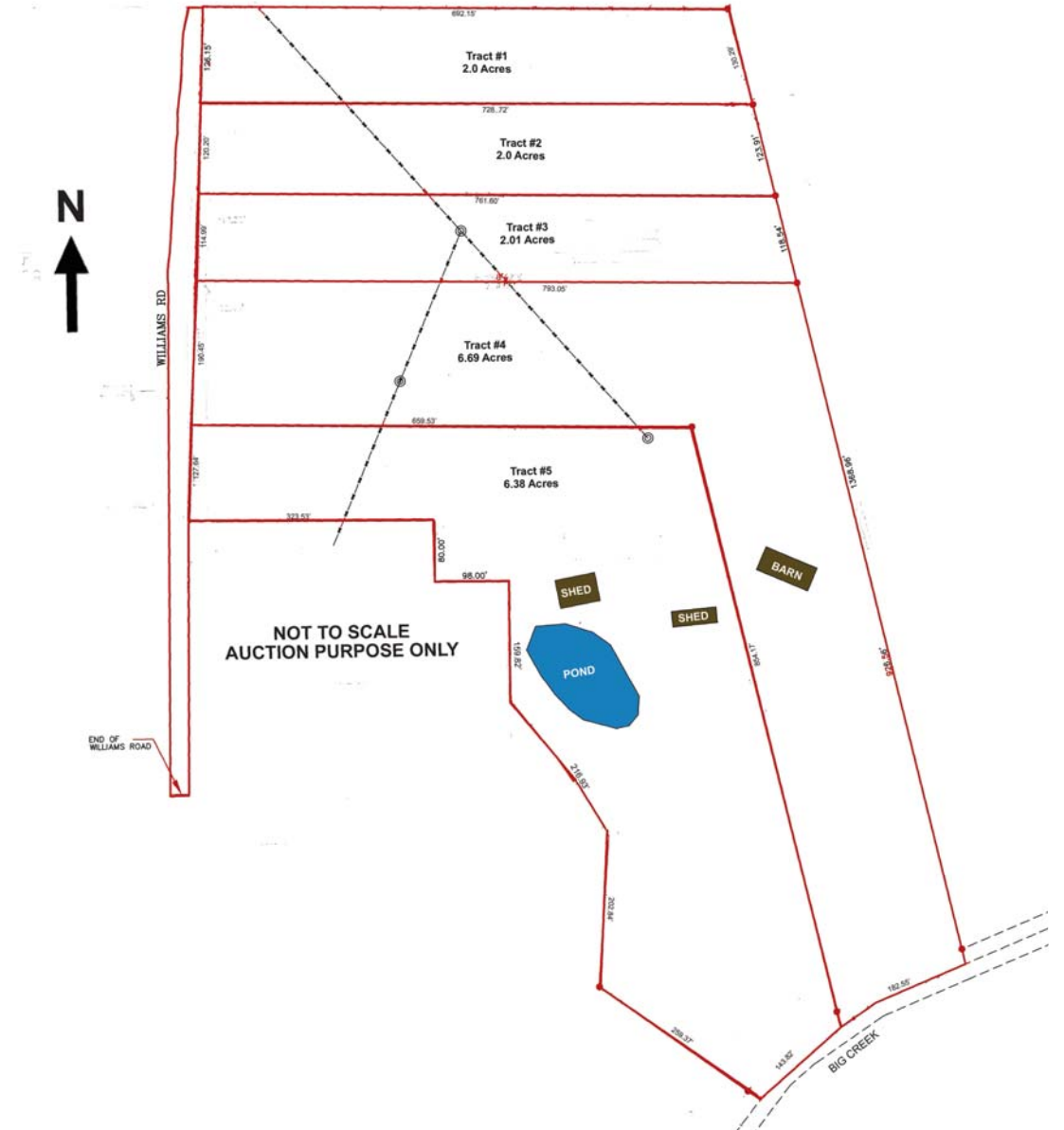
LOCATED IN OWENS COMMUNITY

19± ACRES IN 5 TRACTS

14350 WILLIAMS ROAD | ATHENS, ALABAMA 35614

EXCELLENT PROPERTY WITH ROAD FRONTAGE ON WILLIAMS ROAD. TRACTS 4 & 5 PROPERTY LINE IS THE CENTER OF BIG CREEK.

This 19± Acres features Wooded Tracts and Gently Rolling Land. Excellent 2.0 Acres To 6.69 Acres, Development Property or Build Your Dream Home with Room to Breathe. This Property was previously part of the Big Creek Stables owned by Mr. George O. & Marietta Williams Sr. It was used as Pastureland and the back of Tracts 4 & 5 Borders Big Creek. Electricity & Public Water is available. This Property will be offered in Individual Tracts, Combinations of Tracts, and As A Whole. Don't Miss This Great Opportunity to Purchase some Small or Larger Tracts.



"REAL ESTATE IS STILL TODAY'S BEST INVESTMENT!"

View More Pictures @ www.johnstewartauctions.com / upcoming auctions

DICK CHITTAM, Broker
JOHN STEWART,
Broker/Auctioneer
S.L. #364 256-431-7504
JUSTIN CHITTAM, Auctioneer S.L. #2700
MICHAEL STEWART, Auctioneer S.L. #5473



DICK CHITTAM
REALTY
112 W. Washington St.
Athens, AL 35611

JOHN STEWART AUCTION CO.
"Let Us Plan An Auction For You"

Call Us For Information Phone:
(256) 232-6666 • Toll Free: 1-800-566-6605
Visit Us On The Web:
www.johnstewartauctions.com
email: johnstewart195@gmail.com
www.auctionzip.com #9084
www.gotoauction.com #3188