

# Carrell Auctions



FINE & DECORATIVE ARTS AND DESIGN AUCTION

---

Sunday - June 30, 2024

## FINE & DECORATIVE ARTS AND DESIGN AUCTION



### 1: German Stained Glass Window Panel

USD 50 - 100

A lovely German stained glass window panel featuring male and female musicians. There is a chain at the top for hanging. Stained glass with ink painted details and facial features. Dimensions: L: 18" x H: 14.5" x W: 1/8"

---



### 2: Blenko Green Glass Decanter Mid-Century Modern

USD 50 - 100

A Mid Century Modern green glass decanter with stopper made by Blenko. Retains original label. Dimensions: H: 14.5" x L: 6" x W: 6"

---



### 3: CHARLES CRINER African American Pop Art Painting

USD 300 - 500

An oil on canvas painting by listed African-American artist Charles Criner. Measures 10.5" x 8". Signed lower right recto. Unframed. Dimensions: H: 14.5" x L: 8" X W: 1" Biography: Charles Criner was born in 1945 in Athens, Texas, a small town near Tyler. Criner's childhood artistic training consisted merely of attempts to copy images from Walter Foster Art books. In spite of Criner's lack of training, the young man's eyes were opened to the possibility of an artistic career at an early age. Now a master print maker, the scenes of Criner's stone lithographs, the medium he best prefers, are biographical images pulled both from childhood memories and the artist's immediate environment; "My art reflects my beliefs and the things that I like to do. Fishing has always been one of my favorite pastimes... I also love to recapture the Black experience in the form of people working in the fields. I believe that these images are important and that they should be cherished windows into our past."

---



### 4: CORREIA Art Glass Limited Edition Signed Vase

USD 25 - 75

A beautiful etched glass art vase with bamboo. Brown cut to amber glass. Made by Correia. Signed with edition number on base. Dimensions: H: 12.5" x L: 8" x W: 8"

---



### 5: PHILOMENE DOSEK BENNET Artist Made Painting on Handbag

USD 50 - 100

A fabulous oil painting on a purse by listed artist Philomene Dosek Bennett (American b. 1935). Painted on both sides with different scenes. Philomene's label inside "Brushstrokes". Provenance: From the estate of Philomene Dosek Bennet & Louis Mark. Dimensions: H: 10.5" x L: 16" x W: 4"

---



### 6: LOUIS MARAK Artist Made Stitched Leather Handbag Nude Women

USD 100 - 200

An incredible handmade art piece by listed artist Lou Mark (American, b. 1930). This handbag is leather and hand-stitched by the artist with Marak's signature nude ladies. Signed lower recto. A very rare piece! Dimensions: H: 13" x W: 18" x D: 4" Provenance: From the estate of Philomene Dosek Bennett and Louis Marak.

---



### 7: PHILOMENE BENNETT Oil Pastel Contemporary Painting

USD 50 - 100

An original oil pastels on hand-made paper still life painting by listed artist Philomene Dosek Bennett (American, b. 1935). Signed Philomene's label lower left recto. Provenance: From the estate of Philomene Dosek Bennet and Louis Marak. Dimensions: H: 9.5" x L: 11.5" x W: 1/16"

---

## FINE & DECORATIVE ARTS AND DESIGN AUCTION



### 8: PHILOMENE BENNETT Watercolor Still Life Painting

USD 50 - 100

A still life painting by listed artist Philomene Dosek Bennett (American, b. 1935). Watercolor on hand made paper. Signed lower left recto. Provenance: From the estate of Philomene Bennett and Lou Marak. Size: H: 9.5" x L: 11.5" x W: 1/16"

---



### 9: Italian Mid Century Art Pottery Bowl School of Bitossi

USD 25 - 75

An Italian Mid-Century Modern art pottery ash tray/bowl in two-tone green and blue glazes. Numbered on base. In the manner of Aldo Londi Bitossi. Dimensions: H:8.5" x L:4" x W: 4"

---



### 10: LOUIS MARAK Native American Drawing on Canvas

USD 50 - 100

A pencil on canvas sketch of a Native American Indian by listed artist Louis Marak (American, b. 1930). Unstretched. Unframed. Provenance: From the estate of Philomene Dosek Bennett and Lou Marak. Dimensions: H:21" x L:22" x W: 1/16"

---



### 11: Tapestry & Woven Kilim Rug Textile Pillows Pair

USD 25 - 50

A pair of decorative pillows. One woven wool Kilim rug fabric and one Indian tapestry. From the estate of Philomene Dosek Bennett and Louis Marak. Dimensions: H: 13" x L: 14" x W: 3"

---



### 12: PHILOMENE BENNETT Watercolor Painting Contemporary

USD 50 - 100

A still life painting by listed artist Philomene Dosek Bennett (American, b. 1935). Watercolor on handmade paper. Signed lower left recto. Provenance: From the estate of Philomene Bennett and Lou Marak. Dimensions: H: 12" x L: 9" x W: 1/16"

---



### 13: Mid Century Italian Lidded Pottery Urn School of Bitossi

USD 50 - 100

A Mid-Century Modern Italian pottery lidded vessel. Marked on base. In the manner of Aldo Londi Bitossi. Dimensions: H: 10" x L: 5.5" x W: 5.5"

---



### 14: Woven Kilim Rug Decorative Throw Pillows

USD 25 - 50

A pair of decorative woven Kilim rug style pillows. Measures: 13" square each.

---

## FINE & DECORATIVE ARTS AND DESIGN AUCTION



### 15: LOUIS MARAK Native American Portrait Drawing

USD 50 - 100

A lovely portrait of a Native American female by listed artist Lou Marak (American, b. 1935). Pencil on paper. There is an additional sketch on the verso as well. Provenance: From the estate of Philomene Dosek Bennet and Lou Marak. Dimensions: H:8" x L:11" x W: 1/16"

---



### 16: Mid-Century Modern Italian Pottery Compote

USD 50 - 100

A Mid -Century Modern Italian pottery compote dish. Unique geometric incision lines provide texture to this piece. Signed on base. In the manner of Aldo Londi Bitossi. Dimensions: H: 5.5" x L: 7" X W: 7".

---



### 17: Woven Kilim Rug Decorative Pillows Group

USD 25 - 50

A pair of decorative woven Kilim carpet style pillows. Dimensions: H:15.5" x L: 11" and H: 12" x L: 14"

---



### 18: RON TAYLOR Studio Art Pottery Teapot

USD 25 - 50

A studio art pottery teapot by listed Kansas City artist Ron Taylor. Wicker wrapped handle. Stamped RT on base. Dimensions: H:5.5" x L:4" x W: 3.5"

---



### 19: P. SASBERG Studio Art Pottery Teapot

USD 25 - 50

A studio art pottery teapot with large cork stopper/ lid. Signed on base P. Sasberg(?) Dimensions: H: 8" (with handle) x L: 3.75" X W: 3.75".

---



### 20: Woven Kilim Rug Decorative Throw Pillows Group

USD 25 - 50

A group of three woven tapestry and Kilim style decorative throw pillows. Dimensions: H:16" x L:17" , 11.5" square, H: 11" x L:12"

---



### 21: PHILOMENE BENNETT Studio Art Pottery Contemporary Sculpture

USD 100 - 200

A unique studio art pottery sculpture by listed artist Philomene Dosek Bennet (American, b. 1935). Signed and dated on base. Provenance: From the estate of Philomene Dosek Bennet & Louis Marak. Dimensions: H: 7" x L: 11.5" x W: 13.5"

---



### 22: Mid-Century Amber Crackle Glass Fish Decanter BLENKO?

USD 50 - 100

A Mid-Century Modern amber crackle glass fish decanter with cork stopper. Possibly Blenko. Unmarked. Dimensions: h: 7" x L: 16" x W: 6"

---

## FINE & DECORATIVE ARTS AND DESIGN AUCTION



### 23: ROBERT SHIELDS Design Wall Plaque

USD 50 - 100

A wall plaque by Robert Shields Design with a cat riding in a fish ship. Molded resin. Signed on back. Dimensions: H: 4.5" x L: 16" x W: 1/2"

---



### 24: PHILOMENE BENNETT Watercolor Contemporary Painting

USD 50 - 100

A still life watercolor painting on hand made paper by listed artist Philomene Dosek Bennett (American, b. 1935). Unsigned. Provenance: From the estate of Philomene Dosek Bennet & Louis Marak. Dimensions: H: 8.75" x L: 12" x W: 1/16"

---



### 25: PHILOMENE BENNETT Watercolor Still Life Painting

USD 50 - 100

A still life watercolor painting on hand made paper by listed artist Philomene Dosek Bennett. Signed and dated lower right recto. Provenance: From the estate of Philomene Dosek Bennet & Louis Marak. Dimensions: H: 9" x L: 12.25" x W: 1/16"

---



### 26: PHILOMENE BENNETT Watercolor Painting Mountains

USD 50 - 100

A mountainscape watercolor painting on hand made paper by listed artist Philomene Dosek Bennett. Unsigned. Provenance: From the estate of Philomene Dosek Bennet & Louis Marak. Dimensions: H: 8.5" x L: 6" x W: 1/16"

---



### 27: PHILOMENE BENNETT Studio Art Pottery Sculpture Contemporary

USD 100 - 200

A unique studio art pottery sculpture by listed artist Philomene Dosek Bennett (American, b. 1935). Unsigned. Provenance: From the estate of Philomene Dosek Bennett & Louis Marak. Dimensions: H: 7" x L: 13.5" x W: 14.5"

---



### 28: PHILOMENE BENNETT Watercolor Painting Still Life

USD 50 - 100

A still life watercolor painting on hand made paper by listed artist Philomene Dosek Bennett. Signed and dated lower left recto. Provenance: From the estate of Philomene Dosek Bennet & Louis Marak. Dimensions: H: 9" x L: 12.5" x W: 1/16"

---



### 29: Mid-Century Modern Studio Art Pottery Lidded Jar

USD 25 - 50

A unique studio art pottery lidded jar with celadon green glaze and Incised stamp mark on lower outer edge. Mid Century Modern era. Measures: 7" x 8".

---



### 30: BENNETT Studio Art Pottery Vase

USD 25 - 50

A studio art pottery vase with dark brown glaze. Signed on base "Brian (?) Bennett". Provenance: From the estate of Philomene Dosek Bennett and Louis Marak. Measures: H: 6" x L: 4" x W: 4"

---

## FINE & DECORATIVE ARTS AND DESIGN AUCTION



### 31: LOUIS MARAK Studio Art Pottery Vase

USD 25 - 75

A studio art pottery vase by listed artist Lou Marak (American, b. 1930). Signed and dated '79 on the base. Provenance: From the estate of Philomene Dosek Bennett and Lou Marak. Dimensions: H: 6" x L: 6" x W: 6"

---



### 32: 1981 FLAT EARTH Lidded Art Pottery Dish

USD 25 - 50

A studio art pottery lidded jar with mushroom handle and vegetables on lid and side. Signed on bottom "Flat Earth TE" Measures: H:6" x L:5" x W: 5"

---



### 33: FISHER Vintage Silver Plate Bowl K19

USD 25 - 50

A vintage Fisher silver plate bowl. Marked on base Fisher K19. Measures: 10" diameter x 3" tall

---



### 34: MARY FRANCES Designer Handbag

USD 50 - 100

A Mary Frances designer handbag with dust bag. Brown with cheetah print and heavily detailed with beadwork and other decorative items. Measures: L:14.5" x H: 9" x D: 3"

---



### 35: MARY FRANCES Designer Handbag

USD 50 - 100

A Mary Frances designer handbag with dust bag. Heavily detailed with beadwork and other decorative items. Measures: L:11" x H:4.5" Strap length: 14"

---



### 36: MARY FRANCES Designer Handbag

USD 25 - 50

A Mary Frances designer handbag with dust bag. Heavily detailed with beadwork and other decorative items. Measures: L:12" x H: 4.5"

---



### 37: MARY FRANCES designer Handbag

USD 50 - 100

A Mary Frances designer handbag with dust bag. Wicker weave with leather flower. Heavily detailed with beadwork and other decorative items. Measures: L:11" x H: 4.5"

---



### 38: MARY FRANCES designer Handbag

USD 50 - 100

A Mary Frances designer handbag with dust bag. Suede and leather. Heavily detailed with beadwork and other decorative items. Measures: L:15" x H: 7" Strap length: 10"

---

## FINE & DECORATIVE ARTS AND DESIGN AUCTION



### 39: MARY FRANCES designer Handbag

USD 50 - 100

A Mary Frances designer handbag with dust bag. Red and black. Heavily detailed with beadwork and other decorative items. Measures: 12.5" x 7" x 5"

---



### 40: MARY FRANCES designer Handbag

USD 50 - 100

A Mary Frances designer handbag with dust bag. Layered ruffles and feathers with heavily detailed with beadwork and other decorative items. Measures: 10" x 8"

---



### 41: LISA STEINBAUGH Art Glass Sculpture

USD 50 - 100

A unique contemporary hand blown studio art glass sculpture by artist Lisa Steinbaugh. Signed lower outer rim. Measures: 23" tall x 6" base diameter

---



### 42: STEPHEN CORREIA Etched Art Glass Vase

USD 50 - 100

A gorgeous modern art glass vase by artist Stephen Correia. Etched glass with iridescent gold stars and suns. Signed on base. 1993. Measures: 12" tall x 7.25" diameter.

---



### 43: Pair Woven Kilim Rug Decorative Throw Pillows

USD 25 - 50

A pair of decorative woven Kilim style pillows. Measures: 14" X 14" and 18" x 17"

---



### 44: DON PARKER Rhythm in Wood MCM Condiment Tray

USD 25 - 50

A Mid Century Modern bent walnut condiment tray made by Rhythm in Wood and designed by Don Parker. Includes 2 glass snack trays and 2 glasses. Marked on bottom. Measures: L: 22" x H: 8" x W: 8"

---



### 45: Mid Century Ice Cube Art Glass Ashtray

USD 25 - 50

A vintage 1970s ice cube textured art glass ashtray with round receptacle. Measures: 4.75" x 4.75" x 2"

---



### 46: TONY EVANS Raku Art Pottery Vase

USD 25 - 50

A lovely art pottery vase with raku glaze by listed artist Tony Evans. Signed on base and numbered. Measures: 11.5" x 5" Artist Bio: Born in 1964, Tony Evans is a ceramic artist currently based in the United Kingdom. He specializes in Raku pottery, a traditional technique where individual pieces are first fired at 2,000 degrees and then submerged in paper or leaves as a way to reduce the surface, causing a unique crackling affect and polychrome lustre.

---



## FINE & DECORATIVE ARTS AND DESIGN AUCTION



### 47: ACKCAM Turkish Art Glass Dish

USD 25 - 50

An iridescent black textured art glass dish made by Ackcam in Turkey. Measures: 12.5" x 8.5" x 2.75"

---



### 48: ORRIFORS Swedish Crystal Vase

USD 25 - 50

A unique squat gourd form Swedish crystal vase made by Orrifors. Signed on base. Measures: 5" x 5.5"

---



### 49: TONY CRAY Studio Art Glass Vase

USD 25 - 50

A swirled orange contemporary art glass vase made by artist Tony Cray. Signed and dated on base. Measures: 17" tall x 8" wide at widest point.

---



### 50: MATS JONASSON Swedish Crystal Vase

USD 25 - 50

A Swedish crystal bud vase made by Mats Jonasson. Signed on base. Retains original label. Measures: 10.5" tall x 3" at widest point.

---



### 51: R. FOSTER Contemporary Art Glass Vase

USD 25 - 50

A contemporary studio art glass bud vase that transitions from clear to blue at the top. Lovely form and colors. Signed on base R. Foster. Measures: 12" tall x 2.25" at widest point.

---



### 52: R.C. GORMAN "Female Nude II" Pottery Plate

USD 300 - 500

A fantastic pottery plate with embossed nude female torso by listed artist R.C. Gorman. Signed, titled, numbered, and stamped on verso. Measures: 8" diameter  
Artist Bio: Navajo artist R.C. (Rudolph Carl) Gorman died on November 3, 2005 at a hospital in Albuquerque, New Mexico of pneumonia related to a blood infection. He was a long-time resident of Taos, New Mexico and "best known for his paintings, sculptures and lithographs depicting American Indian women---typically corpulent, barefoot and wrapped in shawls or blankets. . . . While some critics dismissed Mr. Gorman as a commercial artist who prized quantity over quality, others praised his flowing line; his warm, saturated colors; and the strength and spirituality and universality of his subjects."

---



### 53: TONY CRAY Studio Art Glass Vase

USD 50 - 100

A swirled blue and yellow contemporary art glass vase made by listed artist Tony Cray. Signed and dated on base. Measures: 18" tall x 7" wide at widest point. Artist bio: Born in 1962 in St. Louis, Missouri, Tony Cray is a Missouri based studio glass artist / object maker. Working primarily with furnace blown glass since the mid-late 1980's, the artist holds a BFA (studio art 1990), from Southern Illinois University, Edwardsville. In 1997, Cray founded and built Snake Ranch Studio, a full-time glass studio, located in the wooded hills of New Melle, Missouri. Cray's detail driven aesthetic uses line, form, color, pattern, repetition, and texture, to create a sense of visual rhythm in his distinctly modern, classical inspired blown glass works. Having exhibited extensively over the past 30+ years in numerous gallery, group, and solo exhibitions, Cray's work is included in countless public and private collections.

---



## FINE & DECORATIVE ARTS AND DESIGN AUCTION



**54: KOSTA BODA 1970 Glass "Mor" Figurine**

USD 25 - 50

A vintage 1970's art glass figure "Mor" made by Kosta Boda as part of "the Family". She is decorated with gold painted details and signed on base. Retains original label. Measures: 5" tall x 2.25" wide.

---



**55: KOSTA BODA 1971 Glass "Far" Figurine**

USD 25 - 50

A vintage 1971 art glass figure "Far" made by Kosta Boda as part of "the Family". He is decorated with gold painted details and signed on base. Retains original label. Measures: 6.25" tall x 2.25" wide.

---



**56: CHRIS MIROYAN "Sisters" Lithograph**

USD 50 - 100

A limited edition lithograph print entitled "Sisters" by artist Christopher Miroyan. Signed lower right recto and again on verso. Nicely framed under glass. Framed size measures: 14.25" x 14.25"

---

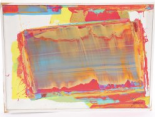


**57: LEO FISK Oil/ Board Still Life Painting Mid-Century**

USD 25 - 50

A vintage Mid-Century Modern still life oil on artist panel painting by artist Leo Fisk. Great gilt wood frame. Signed lower left recto. Framed size measures: 16" x 14"

---



**58: SEAN POOLE Abstract "Gold Shade" Painting**

USD 50 - 100

An abstract bright acrylic on artist panel painting entitled "Gold Shade" by artist Sean Poole. Signed on verso. Gallery framed. Measures: 12.25" x 16.25"

---



**59: LeROY BURKET Abstract Expressionism "Crucifixion" Painting**

USD 200 - 400

A vintage abstract expressionist oil on artist board painting entitled "Crucifixion" by listed artist LeRoy Burket. Signed lower right recto. Signed and dated again on verso: 1954. Framed size: 19.5" x 14.5" Artist Bio: LeRoy Burket (1920 - 2003) was active/lived in Iowa. LeRoy Burket is known for Abstract expression.

---



**60: MARY FRANCES Designer Handbag**

USD 50 - 100

A Mary Frances designer handbag with dust bag. Heavily detailed with beadwork and other decorative items. Measures: 10.5" x 7" Includes removable chain length strap.

---



**61: MARY FRANCES Designer Handbag**

USD 25 - 50

A Mary Frances designer handbag with dust bag. Heavily detailed with beadwork and other decorative items. Measures: 10" x 13"

---

## FINE & DECORATIVE ARTS AND DESIGN AUCTION



### 62: MARY FRANCES designer Handbag

USD 50 - 100

A Mary Frances designer handbag. Heavily detailed with beadwork and other decorative items. Measures: 9? x 7?

---



### 63: LAWRENCE MACARAY Oil/ Canvas 1968 Cubism Abstract Painting

USD 100 - 300

A vintage abstract cubism oil on canvas painting by listed artist Larry Macaray entitled "Khajuraho number 10?". Signed and titled on verso alone with inscription of original owner. See hang tag for transcription. Gallery framed. Measures: 15.75? square. Artist bio: Lawrence Richard Macaray (Born 1921) is active/lives in California. Lawrence Macaray is known for Landscape, figure, collage, illustrator. Lawrence Macaray Obituary May 8, 1921 - July 18, 2019 With his son and daughter at his side, Lawrence Macaray, noted Southern California artist and art teacher, died in the early morning of July 18. He was 98 years old. Lawrence was born to Bethzaida Cooper and Francisco Macaray on May 8, 1921 in Elsinore, California. He liked to remind people that Warren G. Harding was U.S. president when he was born. A seventh generation Californian, Lawrence's 5th great-grandfather, Juan Pablo Grijalva, was granted the 68,000 acre Rancho Santiago de Santa Ana by the king of Spain, establishing the first homestead in present day Orange County. Throughout his childhood, Lawrence and his brothers would return to the last of these original acres at the home and general store owned by their grandparents Ramon Cooper and Manuela Alvarez on Santa Ana Canyon Road in the town of Olive for barbecues, gossip, and fiddle music for the adults and hours of play for the cousins. He graduated from Anaheim High School in 1938 and, in 1943, he married Kathleen Vincent, also of Anaheim. Lawrence and Kathleen lived in Fullerton for the last 30 years. His beloved wife Kathleen passed away in August of 2006. After serving in the Army Air Force, Lawrence returned home and went to college on money provided by the GI Bill, one of the greatest and most beneficial government programs ever created. He received a B.A. degree from Whittier College in 1951 and an MFA from Cal State Long Beach in 1955. Lawrence began teaching art at Torrance High School and later served as professor of drawing and painting at El Camino College from 1962 to 1988. Twice he was named Teacher of the Year. Throughout the 1960s, Lawrence wrote the column "Let's Go" for the Torrance Press-Herald, a weekly review of art and culture in Southern California, as well as a travel feature that culminated annually in a multi-week cultural tour abroad organized and led by Lawrence. He and his participants toured Europe, the Middle East, Africa, India and, in 1959, the Soviet Union. During that time, Lawrence and wife Kathleen ran the very successful Macaray Art Gallery, in West Anaheim. For over a decade the Macaray Art Gallery showed and represented the works of dozens of emerging and contemporary artists of the time, including Rex Brandt, Leon Franks, Robert Freimark, Louis Lunetta and Florence Arnold. Lawrence continued to buy, sell, trade and collect art up until his death. In addition to his teaching career, Lawrence was himself an accomplished artist. His oils, watercolor paintings and lithographs have been exhibited in well over one hundred juried, group, one person and invitational shows at art galleries and museums across the United States and Europe. His work is in the permanent collections of the Bowers Museum, the Laguna Art Museum, Triton Museum of Art in Santa Clara, LACMA, Long Beach Museum of Art, Torrance Art Museum and the Bertrand Russell Peace Foundation in Nottingham, England, as well as in numerous private collections. He is survived by his loving son and daughter, David and Peggy, along with five grandchildren-Jennifer, Alexander, Adam, Sean, and Valerie-and six great-grandchildren. The family would like to thank his neighbors for the kindness they have shown to Lawrence over the years, especially to Don and Rosemary and to an exceptional young woman, Zoe.

---

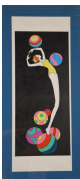


### 64: BOB MILDREXLER OIL/ BOARD PAINTING

USD 100 - 300

An original oil on artist board by listed artist Bob Mildrexler. Signed lower left recto. Dated "82. Nicely framed. Measures: 24.75? x 17.25?

---



### 65: JOHN L. EASTMAN Art Deco Style Lithograph

USD 100 - 200

A signed and numbered Art Deco style lithograph print by American artist John Luke Eastman. Signed lower right recto. Nicely framed under glass. Framed size measures: 30? x 14.25? Artist bio: John Luke Eastman (20th/21st Century) is active/lives in United States. John Eastman is known for Painting.

---



### 66: F. HANSEN OIL/CANVAS PAINTING

USD 100 - 200

An original oil on canvas painting in an illustration style by German artist F. Hansen. Signed lower left recto. Nicely framed with Dolphin Gallery tag on verso. Measures: 13.5? x 11?

---

## FINE & DECORATIVE ARTS AND DESIGN AUCTION



### 67: F. HANSEN OIL/CANVAS PAINTING

USD 100 - 200

An original oil on canvas painting in an illustrative style by German artist F. Hansen. Signed lower right recto. Inscription "Mit Schwung? (With Swing)" Nicely framed with Dolphin Gallery tag on verso. Measures: 13.5" x 11"

---



### 68: PAT WAKEFIELD Oil/Panel MCM Abstract Painting

USD 100 - 200

An original oil on artist board abstract expressionist painting by artist Pat Wakefield. Signed lower right recto. Framed. Measures: 26.5" x 14"

---



### 69: Mid Century Modern Chalkware Statue

USD 25 - 50

A vintage Mid Century Modern painted chalk ware sculpture of a woman. Measures: 25.5" tall Base is 5" square.

---



### 70: 1963 Domberger German Serigraph Calendar

USD 25 - 50

A vintage 1963 calendar of European cities by German printer Domberger. It is a limited/numbered edition. Each month features a different serigraph of a European city. No missing pages. Measures: 11.5" square.

---



### 71: COACH Designer Handbag

USD 50 - 100

A Coach designer handbag with dustbag. Off-white leather with taupe accents. Measures 12" x 11".

---



### 72: MARC By MARC JACOBS Designer Handbag

USD 25 - 50

A coral colored leather Marc Jacobs designer handbag. The interior is a black and white Marc Jacobs logo print. Measures 13" x 7".

---



### 73: PHILOMENE BENNETT Oil Pastel Drawing

USD 50 - 100

An original oil pastels still life painting on hand made paper by listed artist Philomene Dosek Bennett. The back is a "post card" design. Signed lower right recto. Provenance: From the estate of Philomene Dosek Bennet and Louis Marak. Measures: 3.5" x 5.5" Artist Bio; See photos for artist biography.

---



### 74: PHILOMENE BENNETT Oil Pastel Drawing

USD 50 - 100

An original oil pastels still life painting on hand made paper by listed artist Philomene Dosek Bennett. Signed upper right recto. Provenance: From the estate of Philomene Dosek Bennet and Louis Marak. Measures: 8.5" x 5.5" See photos for artist biography.

---

## FINE & DECORATIVE ARTS AND DESIGN AUCTION



**75: PHILOMENE BENNETT Watercolor Painting**

USD 50 - 100

An original watercolor painting on paper by listed artist Philomene Dosek Bennett. Signed lower right recto. Measures: 7.5? x 5.5? Provenance: From the estate of Philomene Bennett and Louis Marak.

---



**76: Mid-Century Modern Studio Art Pottery Vase Signed**

USD 25 - 50

A nice Mid Century Modern studio art pottery seed vase. Signed on base. Measures: 12.5? x 5.5?

---



**77: Mid Century Modern Studio Art Pottery Vase**

USD 25 - 50

A Mid Century modern studio art pottery bud vase. Signed on base inside circle. Measures: 13? x 6?.

---



**78: PHILOMENE BENNETT Watercolor Painting**

USD 50 - 100

An original watercolor painting on paper by listed artist Philomene Dosek Bennett. Measures: 11.5? x 9? Provenance: From the estate of Philomene Bennet and Lou Marak

---



**79: PHILOMENE BENNET Oil Pastel Drawing**

USD 50 - 100

An oil pastels on hand made paper still life painting by listed artist Philomene Dosek Bennett. Signed lower left recto. Provenance: From the estate of Philomene Dosek Bennet and Louis Marak. Measures: 13? x 9.5? See photos for artist biography.

---



**80: Mexican Terra Cotta Pottery Figural Group w/ Devil**

USD 25 - 50

A Mexican or South American terra cotta pottery figural sculpture of a couple sitting on a bench with a devil in-between them. Measures: 5.5? x 6.5? x 2.5?

---



**81: DOMBERGER 1966 Calendar Peruvian Art Serigraphs**

USD 25 - 50

A vintage 1966 calendar of Peruvian art and artists by German printer Domberger. Each page presents a different work of art. Measures: 10.5? x 13.5?

---



**82: LLOYD E. MOORE limited edition Serigraph 1945**

USD 50 - 100

A limited edition serigraph of sailboats in a harbor by artist Lloyd E. Moore. Artist label on verso indicates artist name and completion date of 1945. Nicely framed under glass. Measures: L: 15? x H: 18? x W: 1?.

---

## FINE & DECORATIVE ARTS AND DESIGN AUCTION



**83: ART WHORTON "Cathedral Rocks Sedona #2" Pastel Drawing**

USD 50 - 100

An oil pastels drawing by artist Art Whorton entitled "Cathedral Rocks, Sedona #2". Signed lower right recto. Artist label and title on verso. Nicely framed under glass. Dimensions:H: 18.75" x L: 30" x W: 1"

---



**84: MARY FRANCES Designer Handbag**

USD 50 - 100

A Mary Frances designer handbag with dust bag. Heavily detailed with beadwork and other decorative items. Measures: L:9? x H 10: ? x W 5:

---



**85: MARY FRANCES Designer Handbag**

USD 50 - 100

A Mary Frances designer handbag. Heavily detailed with beadwork and other decorative items. Magnetic handles. Measures: H: 11? X L: 12? X W: 4

---



**86: MARY FRANCES Designer Handbag**

USD 50 - 100

A Mary Frances designer handbag. Heavily detailed with beadwork and other decorative items. Measures: L: 13? H: 12? x W? 4?

---



**87: REMINGTON SCHUYLER Graphite/Paper Portrait Drawing**

USD 100 - 300

A graphite on paper portrait of a young man. Signed lower right recto by listed Remington Schuyler. Nicely framed under glass. L: 16? x H: 20â€™™ x W: 1? Artist Bio:Remington Schuyler attended Washington University in Saint Louis, the Art Student's League in New York, and also studied abroad. His father was a critic on the St. Louis Post-Dispatch and his mother was an artist and musician. He was active in the Boy Scouts and wrote several of their Merit Badge pamphlets. He taught art and was "Artist in Residence" at Missouri Valley College in Marshall, Missouri., He illustrated H. McCracken's Great White Buffalo (taken from "Who's who in American Art") Remington Schuyler (1884-1955) was born July 8,1884, in Buffalo, New York, but he grew up in the Midwest. He was an expert on Native American lore, lecturing, painting and writing extensively on the subject. Schuyler was related through his mother to Frederic Remington studied engineering and art at Washington University in St. Louis. It is not clear just when he studied with Howard Pyle - whether it was before or after he attended the Art Students League\* in New York, but it would seem likely that it was about 1907 or 1908.He also studied in Paris at the Academie Julian\* and in Rome. Schuyler did illustrations for Boy's Life and the Boy Scout Handbook as part of his thirty years service as a volunteer for the Boy Scouts, serving in volunteer roles from Scout Master to Vice President of Council. He also wrote some of the Scouting merit badge requirements. He also was active as a mural painter and was editor of the Architectural Record for a period.He illustrated many books, including Daniel Boone, Wilderness Scout by Stewart Edward White, Indian Hunting Grounds and Great White Buffalo. Other illustrations were published in Life, St. Nicholas and The Century Magazine.Resourceful and self-reliant during the Depression years, he painted many covers for pulp magazines, did some WPA murals and sometimes bartered his paintings for haircuts, meals and dental work. In addition to his illustrating and artwork, he was active in local theater in Pelham Manor, NY and Westport, CT. He taught art in several cities and was the artist-in-residence and an associate professor of art at Missouri Valley College in Marshall Missouri for six years. He died October 18, 1955.

---



**88: FREDERIC JAMES Ink/Paper Sketch**

USD 50 - 100

An ink on paper sketch of a trio of musicians playing at UMKC. Dated 1956. Signed lower right recto. Nicely framed under glass. L: 20? x H: 17â€™™ x W: 2? Artist bio:A talented painter married to Diana Hearne, a woman of wealth, Frederic James was born in Kansas City where the couple lived. Just after World War II, they purchased a second home on Martha's Vineyard off Cape Cod. They were close friends of Thomas King Baker and his wife Mila.In addition to paintings, James did murals for the Trinity Lutheran Church in Mission, Kansas; the Overland Park State Bank, and the Kansas and Consumer's Coop Association. He also completed a wild flower series of prints of the New York Botanical Garden.

---

## FINE & DECORATIVE ARTS AND DESIGN AUCTION



### 89: COACH Designer Handbag

USD 50 - 100

A champagne pink colored leather handbag made by Coach. Comes with brown dustbag. Measures: L: 13" x H: 8" x W: 6"

---



### 90: COACH "Poppy" Designer Handbag

USD 50 - 100

A Coach "Poppy" designer handbag. Classic Coach C logo material with gold and colorful accents and details. L: 11" x H: 7" x W: 3"

---



### 91: DOONEY & BOURKE Designer Handbag

USD 50 - 100

A faux tan crocodile leather handbag made by Dooney & Bourke. Red interior. L: 11" x H: 8" x W: 4"

---



### 92: COACH Designer Handbag

USD 50 - 100

A cream and dark brown leather handbag made by Coach. Pink silky lining. Includes some original tags/paperwork inside bag. L: 14" x H: 7.5" x W: 5"

---



### 93: PHILOMENE BENNETT Watercolor Painting

USD 50 - 100

A watercolor on handmade paper still life painting by listed artist Philomene Dosek Bennett. Signed lower left recto "Philomene Bennett". Provenance: From the estate of Philomene Bennett and Lou Marak. Measures: L: 16" x H: 12" x 1/16" (Flat) See photos for artist biography.

---



### 94: PHILOMENE BENNETT Watercolor Painting

USD 50 - 100

A watercolor on handmade paper still life painting by listed artist Philomene Dosek Bennett. Lovely colorful flowers with pencil lines showing through. Provenance: From the estate of Philomene Bennett and Lou Marak. Measures: L: 12" x H: 9" x 1/16" (Flat) See photos for artist biography.

---



### 95: Mid Century Sapphire Blue Glass Decanter

USD 50 - 100

A vintage Mid Century Modern blue glass decanter with stopper. Made by Blenko or Rainbow Glass Co. Unmarked. Measures: H: 12" x L: 3" x W: 3"

---



## FINE & DECORATIVE ARTS AND DESIGN AUCTION



**96: WAYNE HUSTED BLENKO Mid-Century Modern Spool Decanter**

USD 100 - 200

A Mid-Century Blenko spool/ gurgle decanter with stopper. Designed by Wayne Husted. Retains original Blenko Handcraft label. Gradient blue with zig zag/spool form. Signed and numbered on base. Measures: H: 22? x L: 4.5? x W: 4.5?.



**97: FORMIA VETRI DI MURANO Pink Glass Shark**

USD 100 - 200

A lovely pink art glass shark on base. Retains original label Formia Vetri di Murano. Measures: H: 19? x L: 8? x W: 6?



**98: Mid-Century Modern LUCITE GRAPES CLUSTER**

USD 50 - 100

A vintage Mid Century Modern cluster of grapes. Made of lucite, wood and plastic. Measures: L: 12? x H: 6? x W: 6?



**99: PHILOMENE BENNETT Oil Pastel Drawing**

USD 50 - 100

A still life oil pastels on hand made paper by listed artist Philomene Dosek Bennett. Unsigned. Provenance: From the estate of Philomena Dosek Bennet & Louis Marak. Measures: 11.5? x 7.5? Artist bio in photos.



**100: PHILOMENE BENNETT Mixed Media Painting**

USD 50 - 100

A still life oil pastels and watercolor on hand made paper by listed artist Philomene Dosek Bennett. Unsigned. Provenance: From the estate of Philomena Dosek Bennet & Louis Marak. Measures: 8? x 5.5? See photos for artist biography.



**101: SMADAR LIVNE Contemporary Textile Wall Hanging**

USD 300 - 500

A contemporary textile wall hanging by artist Smadar Livne. Signed in the wool lower right recto: Smadar A. Livne. With original gallery tag on verso from the Barucci Gallery. Title of piece: "Hocus Focus" Dated 1990. Measures: L: 69? x 42.5? x W: 1?



**102: TURKOMAN Persian Carpet Throw Rug**

USD 50 - 100

A vintage hand woven wool turkoman small throw carpet in oranges, reds and blues. Measures: L: 33.5? x W: 38.5? x H: 1?



**103: TURKOMAN Persian Carpet Throw Rug**

USD 50 - 100

A vintage hand woven wool turkoman Persian carpet in reds and oranges. With fold-over double backing or extended length. Measures: L: 45? (open backing 90?) x W: 24? x H: 1? Can be folded or rolled for more compact shipping.



## FINE & DECORATIVE ARTS AND DESIGN AUCTION



**104: PERSIAN CARPET 91? X 66? AREA RUG**

USD 100 - 300

A vintage hand woven wool turkoman Persian carpet in reds and blues. Measures: L: 91? x W: 66? x H: 1?

---



**105: PERSIAN CARPET 63? X 39? Area Rug**

USD 50 - 100

A vintage hand woven wool turkoman Persian carpet in reds and blues. Measures: L: 63? x W: 39? x H: 1? Can be rolled for more compact shipping.

---



**106: SILK PERSIAN CARPET 59? X 35? Area Rug**

USD 50 - 100

A vintage hand woven silk Persian carpet in reds and blues. Measures: L: 59? x W: 35? x H: 1? can be rolled for more compact shipping.

---



**107: PERUVIAN KILIM Long Runner Carpet**

USD 50 - 100

A vintage hand woven wool Peruvian Kilim runner carpet with pictorial birds and animals in center. Measures: L: 130? x W: 54? x H: 1?

---



**108: VICTORIAN CARRIAGE BLANKET Wool/Horsehair**

USD 25 - 50

An antique Victorian wool/ horse hair? carriage blanket with Hunting dogs scene. Measures: L: 61? x W: 57? x H: 1? Can be folded or rolled for more compact shipping.

---



**109: Antique Taxidermy Bear Skin Rug**

USD 200 - 400

An antique bear skin rug with head. Taxidermied and then backed with a foam and felt material backing. Measures: L: 67? x W: 70? x H: 10?

---



**110: BIRMINGHAM Antique Oil Painting Boats in Harbor**

USD 100 - 200

An antique oil on canvas painting of a boat on the water under the moonlight. Signed lower left recto. Signed Birmingham? Possibly Alma Louise Birmingham. It has chalk markings on the verso of canvas/frame indicating it was sold at auction some time ago. Nicely framed in gilt wood frame. Framed Size: L: 31? x H: 26? x W: 3?

---



**111: F. MÄœNSTERFELD Clam Diggers Antique Oil Painting**

USD 100 - 300

An antique oil on canvas painting of clam diggers on the beach. Signed lower right recto by listed artist F. MÄœnsterfeld (Netherlands, 19th-20th century.). Nicely framed in gilt wood frame. Framed Size: L: 38? x H: 24? x W: 3?

---

## FINE & DECORATIVE ARTS AND DESIGN AUCTION



**112: LOU MARAK Mid-Century Modern Still Life Painting**

USD 50 - 100

A vintage Mid Century Modern oil on canvas still life painting. Written in pencil on lower right recto Dec. 30th, 1965. From the estate of Philomene Dosek Bennett and Louis Marak. I would guess this is an unfinished Marak piece based on the work/style. However, it is unsigned. Measures: L: 21? x H: 22? x W: 2?

---



**113: RENATO J. MONTECCHIARI Textile Art Wall Hanging Tapestry Rio 1982**

USD 100 - 300

A fabulous woven textile art wall hanging tapestry by Brazilian artist Renato J. Montecchiari entitled "Suenos a traves de ti" (Dreaming of you). Attached to metal top bar: Bar is engrave-signed on end/top right. Original gallery label on verso. Rio 1982. Dimensions:H: 42" x 72" x 3"

---



**114: JANET KUEMMERLEIN Fiber Art Textile Sculpture Mid-Century Modern**

USD 50 - 100

A vintage Mid Century Modern fiber art/ textile sculpture by listed artist Janet Kuemmerlein (KÄ¼mmerlein) (Kansas, 1932-). It is a three dimensional (stuffed) bird backed on cardboard? Initials JK are stitched into the fabric lower right recto. Measures: L: 20? x H: 16? x W: 4?

---



**115: NANCY 58 Oil Painting Portrait of a Gentleman**

USD 25 - 50

A vintage Mid Century Modern oil on canvas painting. Portrait of a man. Signed lower left recto "Nancy 58". Framed size: H: 34? x L: 17.5? x W: 2?

---



**116: LOUIS MARAK Oil Painting Portrait of a Woman**

USD 100 - 200

An oil/canvas painting by listed artist Lou Marak (Missouri, 1930-). A great contemporary portrait of a woman (probably Philomene Bennett). Signed and dated upper right recto. Titled, dated on stretcher bar on verso "End of the Line". Provenance: From the estate of Philomene Dosek Bennet and Louis Marak. Measures: H: 24? x L: 18? x W: 2?

---



**117: MICHAEL E. OTT "Suburban Samurai" 1965 Serigraph Signed/#**

USD 100 - 300

A Mid Century Modern serigraph entitled "Suburban Samurai" by listed artist Michael Ott. Michael E Ott (1945 - 1996) was active/lived in Kansas. Signed, limited edition/ numbered, titled lower recto. Nicely framed under glass. Measures: L: 20? x H: 25? x W: 1?

---



**118: JUDITH BURNGEN Photograph "Pi Pi y Rañol" Havana, Cuba**

USD 25 - 75

A contemporary photograph entitled "Pi Pi y Rañol" by artist Judith Burngen. Pencil titled, signed lower recto. Nicely framed under glass. Retains original artist label on verso explaining the subject matter and artist biography. Measures: H: 20.5? x L: 16.5? x W: 1?

---

## FINE & DECORATIVE ARTS AND DESIGN AUCTION

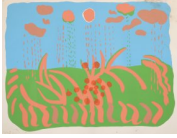


**119: BRUCE MEYER BUCK Oil/Encaustic Painting Mid-Century Modern**

USD 50 - 100

A Mid Century Modern oil/ encaustic on artist board portrait of Philomene Dosek Bennet by listed artist Bruce Meyer Buck. A great moody portrait with a charming inscription on the verso: "For the wonderful weekend we had at my cabin, Bruce?". From the estate of Philomene Bennett and Lou Marak. Framed size Measures: H: 22.5" x L: 18" x W: 2"

---



**120: PHILOMENE BENNETT Serigraph Signed/Numbered**

USD 50 - 100

1980 serigraph on paper by listed artist Philomene Dosek Bennett. Signed, dated 1980, numbered 2/20, titled "Berry Bundle Day" lower recto. Provenance: From the estate of Philomene Dosek Bennett and Louis Marak. Measures: L: 36" x H: 30" x W: 1/16" (flat)

---



**121: JUDITH BURNGEN Photograph "Quatro Caminos Mercado" Havana, Cuba**

USD 50 - 100

A contemporary photograph entitled "Quatro Camino Mercado" by artist Judith Burngen. Pencil titled, signed lower recto. Nicely framed under glass. Retains original artist label on verso explaining the subject matter and artist biography. Measures: H: 20.5" x L: 16.5" x W: 1"

---



**122: MASAMI TERAOKA Whitney Museum of Art Exhibition Print**

USD 50 - 100

An exhibition print from the Whitney Museum of Art for Masami Teraoka. Dated 1980. Nicely framed under glass. Measures: L: 57" x H: 18" x W: 1"

---



**123: 3 Ft Tall Decorative Oriental Pottery Vase**

USD 25 - 50

A tall oriental decorative pottery vase. Unmarked. Measures: H: 36.5" x L: 14" x W: 14"

---



**124: Antique Alabaster Floor Lamp**

USD 25 - 75

An antique floor lamp. Gilt metal with alabaster base. The shade is fluted with a raised schmalz glass rim. Lamp Measures: H: 64" x Base: W: 12" x L: 12" Shade measures: 16" x 16" x 6"

---



**125: ART NOUVEAU Tiger Maple Plant/Vase Stand**

USD 75 - 150

An antique Art Nouveau carved wood plant stand. A two tiered vase or plant with great curvilinear shapes and tiger maple veneer. Measures: H: 40" x L: 15" x W: 15"

---

## FINE & DECORATIVE ARTS AND DESIGN AUCTION



**126: KINKWOOD "ALISON" Contemporary Fiberglass Torso Wall Sculpture**

USD 100 - 200

A contemporary painted fiberglass torso sculpture with wall mount. Signed, dated, titled on verso: "Alison" '00 Kinkwood #343. Measures: H: 35" x W: 21" x D: 8"

---



**127: FOLK ART Carved Wooden Horse Bench**

USD 50 - 100

A neat folk art carved wood horse form bench. The legs are removable for more compact shipping. Measures: L: 43" x H: 18" x W/D: 12"

---



**128: MAJOLICA Pottery Elephant Table w/ Glass Top**

USD 50 - 100

A majolica pottery elephant side table with removable round glass table top. Unmarked. Glass measures: 19.25" diameter Elephant measures: H: 22.5" x W: 22" x D: 9.5"

---



**129: MID-CENTURY MODERN Walnut Arm Chair**

USD 50 - 100

A Mid-Century Modern walnut arm chair with yellow pleather or leather? seat and back. Has a Penn Mutual sticker on the back. H: 31" x W: 34" x D: 25"

---



**130: PHILOMENE BENNETT Fiberglass Sculptural Lamp "Tabernacle"**

USD 100 - 300

A fabulous sculpture lamp entitled "Tabernacle" by listed artist Philomene Dosek Bennett. Made of poly resin, fiberglass and acrylic paint. Retains original gallery tag. Dated 1986. The little door opens and there is a bird's nest where the light bulb goes. Plugs in with a regular wall plug. Has a long cord. Provenance: From the estate of Philomene Dosek Bennet and Lou Marak. H: 75" x W: 14" x D: 14"

---



**131: MID-CENTURY MODERN Walnut Cube End Table / Pedestal**

USD 50 - 100

A Mid-Century Modern walnut wood cube end table. Could also be used as a lower pedestal. It is hollow inside with the numbers: 42102-01 stamped inside. Measures: 16" cubed. It has a Penn Mutual sticker on it.

---



**132: 4 G.F. BUSINESS EQUIP Mid-Century Modern Swivel Chairs**

USD 100 - 200

A set of four vintage Mid-Century Modern swivel / office chairs. Yellow leather, plastic, metal base made by G.F. Business Equipment. H: 33" x 24.5" x 24.5"

---

## FINE & DECORATIVE ARTS AND DESIGN AUCTION



**133: LOUIS MARAK 1978 Oil Painting Portrait of a Woman**

USD 100 - 300

A Mid-Century Modern oil/canvas portrait of a woman by listed artist Lou Marak. Signed and dated 1978 lower right recto. Unframed. H: 36" x W: 30" x D: 1"

---



**134: PHILOMENE BENNETT Oil Painting "Spring Break I" 1978**

USD 100 - 200

A Mid-Century Modern oil on canvas painting by listed artist Philomene Dosek Bennett. The piece is entitled "Spring Break" and is dated 1978 on verso. The piece is gallery framed. H: 21" x W: 25" x 2" Provenance: From the estate of Philomene Dosek Bennett and Lou Marak.

---



**135: MID-CENTURY MODERN Textile Wall Hanging**

USD 25 - 50

A Mid-Century Modern woven textile wall hanging made by Arte Mexicano. Label on verso. Measures: H: 57" x W: 24" x D: 2"

---



**136: MID-CENTURY MODERN Textile Art Wall Hanging**

USD 25 - 50

A Mid-Century Modern woven textile art wall hanging made by Arte Mexicano. Label on verso. Measures: H: 39" x W: 11" x D: 2" Can be rolled or folded for more compact shipping.

---



**137: ECK-ADAMS CORP Mid-Century Modern Swivel Office Chair**

USD 25 - 50

A vintage Mid-Century Modern swivel office chair in black pleather and metal made by Eck-Adams Corp. Retains Eck-Adams label. The back has an adjustable height knob. Measures: H: 32.5" x W: 19" x D: 19"

---



**138: BURKE Fiberglass Shell Chair Mid-Century Modern**

USD 25 - 50

A vintage Mid-Century Modern fiberglass shell chair with metal leg base made by Burke. It has a removable orange cushion. Marked Burke on base. Measures: H: 31" x W: 20" x d: 24"

---



**139: Pair Bamboo & Wicker Caned Solarium Chairs**

USD 75 - 150

A nice pair of vintage Mid-Century Modern solarium chairs made of bamboo with wicker caning. Maker unknown. Measures: H: 35" x W: 21.5" x D: 18"

---



**140: Pair WICKER PLANTERS JARDINIÃRES Mid-Century Modern**

USD 25 - 50

A pair of vintage Mid-Century Modern woven wicker jardiniÃres. One taller and one shorter. Measurements: Tall: H: 23" x W: 15" x D: 15" Short: H: 16" x W: 15.5" x D: 15.5"

---

## FINE & DECORATIVE ARTS AND DESIGN AUCTION



### 141: HERMAN MILLER Office Chair Mid-Century Modern

USD 100 - 200

A vintage Mid-Century Modern office chair made by Herman Miller. Black leather and metal base. Retains original tag on bottom of chair. H: 35" x W: 26" x D: 20" Has a Penn Mutual label on the back.

---



### 142: DOROTHEA C. Contemporary Abstract Painting

USD 50 - 100

An abstract contemporary oil/canvas painting signed lower right recto Dorothea C. Framed. Measures: H: 34.5" x W: 36" x D: 2"

---



### 143: FRANCIS PARAISON Acrylic/Canvas Expressionist Painting

USD 100 - 200

An acrylic on canvas panel painting by listed Haitian artist Francis Paraison. Signed and dated lower right recto. Framed and backed. Measures: H: 24" x W: 27.5" x D: 2" Artist Bio: Francis Paraison (20th Century) was active/lived in Haiti. Francis Paraison is known for Painting.

---



### 144: PEDRO MARROQUIN Oil/Canvas Spanish Painting

USD 100 - 200

A Mid-Century Modern oil/canvas painting by listed Spanish artist Pedro Marroquin. Signed lower right recto. Done in a MCM / Folk Art style. Framed. Measures: H: 15.25" x W: 21" x D: 2" Artist Bio: Pedro Marroquin (1926 - 1990) was active/lived in Spain. Pedro Marroquin is known for Paintings.

---



### 145: PHILOMENE DOSEK BENNETT Oil/Canvas Abstract Painting

USD 100 - 200

An oil on canvas abstract "Red mountain" painting by listed artist Philomene Dosek Bennett. Philomene created several works of art of this red mountain, including sketches and a serigraph (for sale in this auction.) Framed. Unsigned. Provenance: From the estate of Philomene Dosek Bennet and Louis Marak. Measures: H: 14.5" x W: 11.5" x D: 2"

---



### 146: 3 JANSKO Mid-Century Modern Orange/Chrome Barstools

USD 100 - 200

A group of three MCM orange vinyl and chrome barstools made by Jansko. Retains original label on bottom of chairs. H: 38.5" x W: 23" x D: 18"

---



### 147: ALASKAN FUR Luxury FINNISH RACCOON Full-Length Fur Coat

USD 200 - 400

A luxury full-length Finnish Raccoon fur coat made by Alaskan Fur. Two hook closures down the front. Fully lined with sash tie on inside. Monogrammed on inside PMA. Measures: 55" long x 40" wide chest x 34" sleeve length (from middle of neck to end of cuff).

---

## FINE & DECORATIVE ARTS AND DESIGN AUCTION



**148: EISZNER Oil/Canvas Contemporary Post-Impressionism Painting**

USD 50 - 100

A large oil on canvas painting executed in a Contemporary Post-Impressionist style. Signed lower left recto "Eiszner". Framed. Measures:H: 48" x L: 36" x D: 2"

---



**149: Macrame Hanging Planter w/ Woven Basket Mid-Century Modern**

USD 25 - 50

A vintage Mid-Century Modern woven planter basket inside a hanging macramé jardinière. Basket measures: H: 13" x L: 15" x W: 15" Macrame hanger (with basket inside) L: 63"

---



**150: MCM Macrame Hanging Planter w/ Woven Basket**

USD 25 - 50

A vintage Mid-Century Modern woven planter basket inside a hanging macramé jardinière. Basket measures: H: 10" x L: 12" x W: 12" Macrame hanger (with basket inside) L: 51"

---



**151: Pair CERAMIC PANTHERS Statues Mid-Century Modern**

USD 50 - 100

A pair of MCM pottery panthers with sparkle green eyes. Unmarked. Each measures: H: 5" x L: 21" x D: 5"

---



**152: Art Deco CZECH GLASS Hanging Lamp Shade**

USD 100 - 200

An antique Art Deco Czechoslovakian glass pendant lamp shade suspended by 3 metal chains. Measurements:Hanging length: 14" Shade: H: 6" x L: 12" x D: 12"

---



**153: SHARIF Designer Lizard Handbag**

USD 50 - 100

A designer handbag made of colorful lizard leather made by Sharif. Tagged on inside near pocket. Measurements: Strap Drop: 17" Bag: H: 9" x L: 11" x D: 4"

---



**154: BOTKIER Designer Handbag**

USD 25 - 50

A Botkier designer handbag made of faux snake leather. Includes original paperwork. Measures:Strap Drop: 7" H: 7" x L: 15" x D: 8"

---



**155: COACH Designer Red Leather Handbag w/ Dustbag & Paperwork**

USD 50 - 100

A designer red leather handbag made by Coach. Includes dustbag and original paperwork. Measures: Strap Drop: 14" Bag: H: 11" x L: 11" x D: 4"

---



## FINE & DECORATIVE ARTS AND DESIGN AUCTION



**156: PHILOMENE BENNETT & LOU MARAK Art Exhibition Poster**

USD 25 - 50

A vintage 1970's exhibition poster for artists Philomene Dosek Bennett and Louis Marak. It lists their biographies and their studio address in Kansas City. The poster has some creases, as shown. Measurements:H: 22" x L: 17" x W: 1/16" (flat)Can be rolled for more compact shipping.



**157: STERLING SILVER Demi-Tasse Spoons & Picks**

USD 25 - 50

A group of Sterling silver demi-tasse spoons and picks. Measures:3" x 1"



**158: Studio Art Pottery Signed JU Contemporary Vase**

USD 25 - 50

A contemporary studio art pottery vase with red and blue glazes. Stamped mark on base "JU 2003". Measures:H: 4.75" x L: 7" x W: 7"



**159: MICHAEL ACKER Pastel Drawing "MORNING WAITERS 2"**

USD 50 - 100

An original pastel drawing by artist Michael Acker entitled "Morning Waiters 2". Nicely framed under glass with artist name, title of piece label on verso. Framed size measures: H: 29" x W: 23" x D: 1"



**160: ARTHUR UMANOFF 1960's Walnut Spindle Magazine Rack**

USD 50 - 100

A vintage Mid-Century Modern walnut wood spindle magazine rack designed by Arthur Umanoff. Measures:H: 14.75" x L: 18" x D: 8"



**161: ABSTRACT Contemporary Art Painting Signed**

USD 50 - 100

A large contemporary abstract acrylic on canvas painting. Signed and dated lower right recto. Measures:H: 36" x L: 48" x D: 2"



**162: EDWARD 1967 Abstract Painting 49" x 61"**

USD 100 - 300

A large Mid-Century Modern abstract oil on canvas painting. Perhaps a city-scape reflected in a bay or a non-objective image? Signed and dated lower right recto "Edward '67" Framed size measures: 49" x 61" x 1"



**163: PHILOMENE BENNETT "LOVE TOTEM" Fiberglass Sculpture**

USD 200 - 400

A tall fiberglass and epoxy resin sculpture by listed artist Philomene Dosek Bennett. This piece is entitled "Love Totem" and pays homage to her family. Philomene and Lou Marak's children's names are on the totem, including the two who died (Brad and Jean) on the two hearts. Retains original gallery label. Measures:H: 95" x L: 43" x D: 25" Provenance: From the estate of Philomene Dosek Bennett and Lou Marak.

## FINE & DECORATIVE ARTS AND DESIGN AUCTION



### 164: PENDANT SWAG LAMP Mid-Century Modern

USD 50 - 100

A large Mid-Century Modern swag lamp with woven green shade and atomic gold details. Has a long cord wrapped in metal chain. Lamp Measures: H: 31" x 11" x 11"

---



### 165: PERSIAN CARPET Area Rug 60" X 40"

USD 100 - 200

A nice hand-woven Persian carpet area rug. Retains original tag on verso: Ayakia Bros. Made in Iran. Measures: 60" x 40" x 1/8" Can be rolled or folded for more compact shipping.

---



### 166: PERSIAN CARPET Long Runner Rug 168" X 41"

USD 100 - 200

A long Persian carpet runner in a lovely color palette. Edged on verso. Hand-woven. Measures: H: 168" x L: 41" x D: 1/8" Can be folded or rolled for more compact shipping.

---



### 167: EGLOMISÉ Landscape Print Foiled Background New York Twin Towers

USD 50 - 100

A vintage eglomisé (printed on glass) landscape of New York City (including the twin towers) with a foiled background for sparkle and depth. Made by Fortune & Frame out of Farmingdale, NY. Measures: H: 20" x W: 32" x D: 1/8"

---



### 168: J. ALLEN Large Mid-Century Abstract Painting 48" X 60"

USD 100 - 200

A large Mid-Century Modern abstract acrylic on canvas painting. Signed lower right recto J. Allen. Framed size: H: 48" x L: 60" x D: 1.5"

---



### 169: GIB DeVIT Mid-Century Modern Still Life Painting

USD 50 - 100

A nice Mid-Century still life painting of a bowl full of radishes/turnips. Oil on board? Nicely framed and backed with paper. Signed on verso Gil or Gib De Vit. Measures: H: 19" x L: 25" x D: 1.25"

---



### 170: PHILOMENE BENNETT Framed Pastel Portrait

USD 50 - 100

An original pastel on paper portrait by listed artist Philomene Dosek Bennett. Nicely framed under glass in an antique gilt wood frame. Provenance: From the estate of Philomene Bennett and Lou Marak. Artist bio: See photos. Measurements: H: 28" x L: 23" x W: 3"

---



### 171: SEAN POOLE Abstract Painting "Field of Blue"

USD 25 - 50

An original acrylic on canvas abstract painting entitled "Field of Blue" by artist Sean Poole. Signed and titled on verso. Measures: H: 21" x L: 17" x W: 1"

---

## FINE & DECORATIVE ARTS AND DESIGN AUCTION



**172: SEAN POOLE Abstract Painting**

USD 25 - 50

An original acrylic on canvas abstract painting by artist Sean Poole. Signed on verso. Measures: H: 21" x L: 17" x W: 1.25"

---



**173: HELEN KENNEDY Mid Century Modern Daisies Painting**

USD 25 - 50

An original oil on canvas panel Mid Century Modern floral painting by artist Helen Kennedy. Signed lower right recto. Measures: H: 20" x L: 30" x W: 1.5"

---



**174: HERACLES God of Hunting Concrete Garden Sculpture**

USD 50 - 100

A nice vintage concrete garden sculpture of Heracles, Greek god of hunting. He has his trusty dog by his side and his quiver full of arrows on his back. Dark Grey/ Black in color. Measures: H: 44" x L: 21" x W: 13"

---



**175: VENUS Goddess of Love Concrete Garden Sculpture**

USD 50 - 100

A nice vintage concrete garden sculpture of Venus, goddess of love. She is rising from the ocean on waves and wears a gauzy gown. Measures: H: 46" x L: 15" x W: 16"

---



**176: ARTEMIS Goddess of Hunting Concrete Garden Sculpture**

USD 50 - 100

A nice vintage Neo-Classical concrete garden sculpture of Artemis, goddess of hunting. She has her loyal dog by her side and her quiver full of arrows. Dark grey/Black in color. Measures: H: 45" x L: 17" x W: 15"

---



**177: MILO BAUGHMAN for DIRECTIONAL Exotic Woods Dining Table 2 Leaves**

USD 500 - 1,000

A gorgeous vintage 1960's dining table designed by Milo Baughman for Directional. It is made of mixed exotic woods and pulls apart in the middle to lengthen it. Comes with 2 leaf extensions. Also includes a full set of table pads (4 total) to cover the entire opened/extended table or can use 2 pads to cover the shorter/ closed table. Measurements: Closed: H: 29.5" x L: 72" x W: 39" Extended w/ 2 leaves: L: 108"

---



**178: KENT COFFEY Mid-Century Modern Vanity Dresser w/ Mirror**

USD 100 - 200

A vintage Mid-Century dresser with vanity mirror made by Kent Coffey in Tawny Walnut. Mirror is detachable. Measurements: Dresser Only: H: 31.5" x L: 64" x W: 20" Mirror only: H: 41" x 35" x 4" Dresser w/ mirror: H: 72"

---

## FINE & DECORATIVE ARTS AND DESIGN AUCTION



### 179: ALTEC LANSING MCM Speakers 879A Santana

USD 100 - 200

A pair of vintage Mid-Century Modern Altec Lansing speakers: 879A Santana. These speakers are untested and sold as is. I don't know if they work or not. Measures: H: 25" x L: 17" x W: 20" (each)

---



### 180: MAINLINE By HOOKER Mid-Century Modern Desk

USD 100 - 200

A fantastic Mid-Century Modern walnut desk: Mainline by Hooker. Measurements:H: 31" x L: 50" x W: 25"

---



### 181: PAOLO MARIONI Porcelain Bust & Marble Pedestal

USD 500 - 1,000

An incredible life-sized Paolo Marioni (Italian, 20th Century) bust sculpture of Marcus Aurelius expertly created in porcelain, with a bronze patina finish and exquisitely painted with a faux marble finish. The bust rests atop a plinth circular base and is signed on the verso with an engraved signature "Paolo Marioni" "Made in Italy". This gorgeous bust sits atop a tessellated marble pedestal with gilt corinthian caput. Artist Bio: Paolo Marioni (20th Century) is a listed artist and was active/lived in Italy. Paolo Marioni is known for Sculpture. DIMENSIONS: Bust: H: 31" x L: 27" x W: 15" Pedestal: H: 54" x L: 15.5" x W: 15.5"

---



### 182: 6 Ft Tall Chinese Export PORCELAIN TEMPLE VASE Famille Rose

USD 100 - 200

A large 20th century Chinese export porcelain temple or palace vase in the Famille Rose pattern. Sits atop a wooden stand. Dimensions: Vase Only: H: 56" x L: 22" x W: 22" Stand Only: H: 12" x L: 14" x W: 14" Vase on Stand: H: 68"

---



### 183: ADRIAN PEARSALL Boomerang Couch Floating Marble End Table

USD 1,000 - 2,000

An all original Mid-Century Modern Boomerang couch with rare floating marble end table designed by Adrian Pearsall (1925-2011) for Craft Associates. All original cushions and fabric. Walnut wood triangular back corner table. Dimensions: H: 51" x L: 129" x W: 51"

---



### 184: JUDITH BURNGEN Art Photograph Escuela Primaria Old Havana

USD 25 - 50

A art photograph by artist Judith Burngen entitled "Escuela Primaria Jose Marti" in Old Havana. Titled and pencil signed lower recto. Nicely framed under glass with artist gallery label on verso. Dimensions: H: 20" x L: 16" x W: 1"

---



### 185: JUDITH BURNGEN El Chi Chi Tabaco Cubano Art Photography

USD 25 - 50

An original photograph by artist Judith Burngen entitled "El Chi Chi, Tabaco Cubano". Signed and titled lower recto. Nicely framed under glass. Dimensions: H: 20" x L: 16" x W: 1"

---

## FINE & DECORATIVE ARTS AND DESIGN AUCTION



### 186: INDUSTRIAL Vintage Blue & White METAL PENDANT LIGHTS

USD 25 - 50

A pair of blue and white metal hanging lights. The ends of the cords have been cut and will need to be re-wired. Dimensions:H: 12" x L: 18" x W: 18"

---



### 187: TURKOMAN KILIM Carpet Geometric Design 160" X 107"

USD 100 - 200

A vintage Turkoman Turkish hand-woven area rug / kilim with a geometric design. Dimensions:H: 1/8" x L: 160 (+3" fringe on two sides) x W: 107" Approximately 13 ft x 9 ft.

---



### 188: MOROCCAN TAUREG Long Wedding Runner BERBER CARPET

USD 100 - 200

An extra long vintage Moroccan, North African Taureg long "wedding" runner carpet from the Berber people. Flat woven. Dimensions:H: 1/16" x L: 226" + 3" fringe (on one end only) x 35" W

---



### 189: AFGHAN TRIBAL BALUCHI Hand-Woven Carpet

USD 50 - 100

An Afghan tribal Baluchi or Balouch hand-knotted wool carpet/ prayer rug. Dimensions:H: 1/16" x L: 58" x W: 31"

---



### 190: CAROL MARLENE "Spring Bouquet" A/P Aquarelle Print

USD 25 - 50

A vintage floral aquarelle print entitled "Spring Bouquet". Artist Proof. Titled and signed in pencil lower recto. Nicely framed under glass with label on verso "Carol Marlene Originals". Dimensions:H: 33" x L: 39" x W: 1"

---



### 191: Asian-Inspired Floral POTTERY Vase Table Lamp

USD 25 - 50

An Asian-inspired floral pottery vase lamp with raised glaze, wooden base, and shade. Lamp works great. Dimensions:H: 33" (with shade) Shade diameter: 17" Lamp diameter: 8"

---



### 192: FOLK ART Embroidered Checkered PINK CAT TEXTILE

USD 25 - 50

A folk art style embroidered textile with a checkered pink and black cat. Unmarked. Dimensions:H: 17" x L: 21" x W: 1/16"

---



### 193: PHILOMENE BENNETT Watercolor Painting

USD 50 - 100

A contemporary watercolor on paper painting by listed artist Philomene Dosek Bennett. Signed lower right recto. Artist Bio: See photo with biography Provenance: From the estate of Philomene Dosek Bennett and Louis Marak. Dimensions:H: 5.5" x L: 7.5" x W: 1/16th (flat)

---

## FINE & DECORATIVE ARTS AND DESIGN AUCTION



**194: PHILOMENE BENNETT Watercolor Painting**

USD 50 - 100

A contemporary watercolor on paper painting by listed artist Philomene Dosek Bennett. Signed lower left recto. Artist Bio: See photo with biography Provenance: From the estate of Philomene Dosek Bennett and Louis Marak. Dimensions:H: 5.5" x L: 7.5" x W: 1/16th (flat)

---



**195: PHILOMENE BENNETT Oil Painting Still Life Vase**

USD 50 - 100

An oil on artist board still life painting by listed artist Philomene Dosek Bennett. Unsigned. Provenance: From the estate of Philomene Dosek Bennett and Louis Marak. Artist Biography: See photos. Dimensions:H: 5" x L: 7" x W: 1/8"

---



**196: PHILOMENE BENNETT Still Life Oil Painting**

USD 50 - 100

A still life oil on board painting by listed artist Philomene Dosek Bennett. Artist Bio: See photo with biography Provenance: From the estate of Philomene Dosek Bennett and Louis Marak. Dimensions:H: 5" x L: 7" x W: 1/8"

---



**197: DARA INTERNATIONAL Tessellated Marble Vase 1983**

USD 50 - 100

A post-modern tessellated marble vase made by Dara International and dated 1983. Retains original label on base. Dimensions:H: 12" x L: 6" x W: 6"

---



**198: SANDRA JOHNSTONE MCM Studio Art Pottery**

USD 50 - 100

A vintage 1960's studio art pottery lidded vessel made by Sandra Johnstone at Berkeley. Signed on base. Chip on bottom edge of pot. Dimensions: H: 10" x L: 10" x W: 10"

---



**199: COACH Designer Handbag (New) & Wallet**

USD 50 - 100

A Coach brown logo material and leather handbag: new with tags. Also includes a Coach leather wallet. Dimensions:Purse:H: 6" x L: 9.5" x W: 4"

---



**200: PALOMA PICASSO Designer Handbag W/ Paperwork**

USD 50 - 100

A bright blue fabric Paloma Picasso designer handbag with original paperwork. Gently used condition. Dimensions:H: 7" x L: 11.5" x W: 4" Strap Drop: 3-4"

---



**201: ALVIERO MARTINI 1st KLASSE Designer Handbag**

USD 50 - 100

A designer handbag 1st Klasse made by Alviero Martini. Grey fabric with yellow trim. Gently used. The original hang tag is still on the inside pocket. Dimensions:H: 12" x L: 11" x W: 4" Strap Drop: 8"

---

## FINE & DECORATIVE ARTS AND DESIGN AUCTION



**202: DOONEY & BOURKE Designer Handbag Tote W/ Paperwork**

USD 50 - 100

A Dooney & Bourke designer Tassel tote satchel bag. Logo material with leather details and handles. Includes original paperwork. Wear to the bottom corners. Dimensions:H; 8" x L: 15" x W: 6" Strap Drop: 4"

---



**203: HAEGER Mid-Century Modern Ceramic Sculpture**

USD 50 - 100

A vintage MCM figural ceramic sculpture finished in a black glaze. Made by Haeger. Retains original label on verso. Dimensions:H: 18" x 10" x 7"

---



**204: Mid-Century Modern Spanish Revival BRUTALIST LAMP**

USD 50 - 100

A vintage MCM Spanish Revival lamp constructed of wrought iron and amber glass. Working condition. Dimensions:H: 34" (including shade) x L: 7" x W: 7" Shade Diameter: 18"

---



**205: Mid-Century Modern Asian-Inspired POTTERY VASE LAMP**

USD 50 - 100

A Mid-Century Modern Asian-inspired pottery vase lamp on wooden stand with pleated shade. Working condition. Dimensions:H: 32" (including shades) x L: 11" x W: 11" Shade Diameter: 21"

---



**206: BALL DESK LAMP Mid-Century Modern**

USD 25 - 50

A Mid-Century Modern gold metal ball articulated desk lamp. Dimensions:H: up to 20" x L: 5" x W: 5"

---



**207: VICTORIA IRONSTONE Antique Scenic Pitcher**

USD 25 - 50

An antique Victoria Ironstone scenic pitcher. Marked on base. Dimensions:H: 9.5" x L: 9" x W: 7"

---



**208: INTERNATIONAL STERLING SILVER Flatware Set**

USD 600 - 1,200

A Sterling silver flatware set made by International Sterling. 30 pc total. Total weight 45.4 troy ounces (includes stainless knife blades)Dimensions:knife: H: 9.75" x W: .75" Total weight: 3 lbs 11 oz or 45.4 troy ounces

---



**209: DANSK Mid-Century Modern 4 PC FLATWARE**

USD 25 - 50

A Mid-Century Modern group of four pieces of Dansk flatware. Dimensions:1 Knife: H: 8.5" 3 Spoons: H: 7" x W: 1.75"

---



## FINE & DECORATIVE ARTS AND DESIGN AUCTION

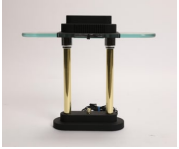


### 210: GIO PONTI FRASER'S ITALY Mid-Century Modern Flatware

USD 100 - 200

A group of thirteen pieces of MCM flatware. 12 pieces of Ponti Fraser's Italy flatware and 1 fork is Ponti for Krupp Milano flatware. Dimensions:Knives: H: 7.5" Spoons: W: 1.5"

---



### 211: GEORGE KOVACS Glass Shade Modernist Desk Lamp

USD 25 - 50

A glass and brass desk lamp designed by George Kovacs. Working condition. Dimensions:H: 15" x L: 17" x W: 4.5"

---



### 212: LUG Grey Crossbody Handbag

USD 25 - 50

A Lug grey fabric crossbody handbag with two straps. The extra strap is new. Dimensions:H; 9" x L: 8" x W: 3"

---



### 213: COACH Designer Leather Handbag W/ Paperwork

USD 50 - 100

A Coach designer grey leather handbag with paperwork. Dimensions:H: 12" x L; 12" x W: 4" Strap Drop: 5"

---



### 214: DOONEY & BOURKE Designer Logo Handbag

USD 50 - 100

A Dooney & Bourke designer handbag with logo fabric and leather trim. Dimensions:H: 8" x L; 13" x W: 5" Strap Drop: 5"

---



### 215: ORREFOR'S Crystal Decanter & Stopper

USD 25 - 50

A lovely vintage Orrefor's crystal decanter with stopper. Etched signature and date on base. Dimensions:H: 11.5" x L: 8" x W: 8"

---

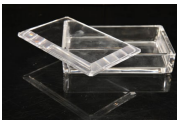


### 216: BACCARAT Crystal Decanter & Stopper

USD 50 - 100

A lovely French crystal decanter and stopper made by Baccarat. Marked on base and stopper. Dimensions:H: 8.5" x L: 5.5" x W: 5.5"

---



### 217: VAL ST. LAMBERT Art Deco French Crystal Dresser Box

USD 25 - 50

An Art Deco French crystal lidded dresser box made by Val St. Lambert. Marked on base. Dimensions:H: 2" x L; 6.5" x W: 4"

---

## FINE & DECORATIVE ARTS AND DESIGN AUCTION



### 218: DAUM France Crystal Decanter & Stopper

USD 25 - 75

A lovely French crystal decanter with stopper. Marked on base Daum, France. Dimensions:H: 13" x L: 5.5" x 5.5"

---



### 219: PHILOMENE BENNETT "Red Mountain" Serigraph

USD 25 - 75

A large limited edition 4/20 serigraph on paper print by listed artist Philomene Dosek Bennett. Signed, dated 1980, and titled lower recto. Loose, unframed. As shown. Dimensions:H: 36" x L: 30" x W: 1/16" (flat)

---



### 220: PHILOMENE BENNETT "Going Down" Serigraph S/N

USD 50 - 100

A serigraph print on paper entitled "Going Down" by listed artist Philomene Dosek Bennett. Limited edition 15/20, titled and pencil signed lower recto. Unframed. Provenance: From the estate of Philomene Bennett and Louis Marak. Dimensions:H: 36" x L: 30" x W: 1/16" (flat)

---



### 221: LOU MARAK Owl Painting 1960'S

USD 50 - 100

A vintage ink on paper painting of an owl by listed artist Louis Marak. Unsigned. Loose. Provenance:From the estate of Lou Marak and Philomene Dosek Bennett. Dimensions:H: 36" x L: 24" x W: 1/16" (flat)

---



### 222: Arts & Crafts Style 5 Panel STAINED GLASS WINDOWS Frank Lloyd Wright Style

USD 200 - 400

An Arts & Crafts style (in the manner of Frank Lloyd Wright) stained glass windows. 5 panels- not connected. Dimensions: Each panel measures:H: 72" x L: 20" x W: 1/4"

---



### 223: CRISHAWN Art Designs Mixed Media Japanese Serigraph Hand Made Paper

USD 100 - 200

A large Japanese hand colored serigraph on hand made paper with other collage elements. Stamped in cartouche lower right recto with wax seal. Nicely framed under glass. Original label on verso- made/sold by Crishawn Art Designs. Series #210000.This is a very large piece!Dimensions:H: 85" x L: 30" x W: 2"

---



### 224: WILLIAM R. GATELEY "Quiet Time" Triptych A/P S/N

USD 25 - 75

A triptych print entitled "Quiet Time" by William R. Gateley. Signed, titled and numbered in pencil. Artist Proof. Nicely framed under glass. Gallery tag on verso from Carol Marlene Originals. Dimensions:H: 62" x L: 33" x W: 1.5"

---

## FINE & DECORATIVE ARTS AND DESIGN AUCTION



**225: 1950's ABSTRACT Oil/Canvas Painting 45" x 72"**

USD 200 - 400

A large vintage (circa 1950's) abstract oil on canvas painting. Unsigned. Dimensions:H: 45" x L: 72" x W: 1"

---



**226: KENT COFFEY FORETELLER Mid-Century Modern Bed Headboard Bookcase**

USD 100 - 200

A vintage Mid-Century Modern Bookcase headboard frame made by Kent Coffey. The Foreteller series in tawny walnut wood. Dimensions:H: 36" x L: 60.5" x W: 10"

---



**227: 2 FOSTER MCDAVID Mid-Century Modern Dining Arm Chairs**

USD 50 - 100

A pair of vintage Mid-Century Modern wooden armchairs with a yellow/ cream colored textured fabric. Made by Foster McDavid. Retains original tag underneath seat. Dimensions:H: 37.5" x L: 20.5" x D: 19"

---



**228: 4 FOSTER MCDAVID Mid-Century Modern Dining Room Side Chairs**

USD 100 - 200

A set of four Foster McDavid Mid-Century Modern dining room side chairs. The seats are covered in a textured light yellow/cream colored fabric. Dimensions: (each)H: 37.5" x L: 18" x D: 20"

---



**229: 4 LENOIR "BROYHILL BRASILIA" Type Mid-Century Modern Chairs**

USD 100 - 200

A set of four Mid-Century Modern dining chairs. These are made by Lenoir and resemble Broyhill Brasilia line of furniture. The fabric is gold with white birds. 2 arm chairs:H: 38" x L: 21" x D: 20" 2 side chairs: H: 38" x L: 20" x D: 20"

---



**230: VICTORIAN EASTLAKE Wall Mirror**

USD 25 - 75

An antique Victorian Eastlake wall mirror. Dimensions:H: 43" x L: 25" x W: 3.5"

---



**231: J. CHRIS MOREL "Fountain" Oil/Canvas Painting Taos, NM**

USD 500 - 1,000

A gorgeous large original oil on canvas painting by listed artist J. Chris Morel, from Taos, NM. Signed lower right recto and titled "Fountain" on verso. Retains original J. Chris Morel gallery label on verso with original price of \$2,700. Nicely framed. Dimensions:H: 56" x L: 31.5" x W: 2" Artist Biography:Chris Morel is a landscape painter from the Taos NM area. A majority of Morel's paintings are painted on location throughout Northern New Mexico, the West and many other locations around the country and abroad. Morel most recently was invited to participate in the Coor's National Western Art Exhibit in Denver and exhibited at the Gilcrease Museum in Tulsa, Oklahoma. Maynard Dixon Country 2005, August 24-28 2005, Mt Carmel, Utah. One Man Show Nichols Gallery Taos New Mexico, Opening Sept 24, 2005. Award Winner 2005 George Phippen Museum Western Art Show, Prescott, Arizona. Southwest Art Magazine February 2005 "Best of the West." One Man Show Of Earth and Sky Gallery Gabriele, Pasadena California, February 12 through March 10, 2005. 2005 C.M. Russell Auction of Western Art, Great Falls, Montana.Gilcrease Museum 2004 American Art in Miniature, Tulsa Oklahoma. Award Winner Taos Invites Taos Fall Arts Annual Exhibit , Taos New Mexico. Maynard Dixon Country 2004 Invitational Exhibit and Sale, Mt. Carmel, Utah. 2004 C.M. Russell Museum Auction of Western Art. Great Falls, Montana. Southwest Art Magazine article Feb 2004 "Let it Snow" Featuring Morel's work. One Man Show at Gallery Gabriele in Pasadena, California, Feb 14th to March 12th, 2004. Morel's work featured in North Light Publications (Instructional Art Books) Best of Flower Painting and Simple Secret to Better Painting. 2003 Oil Painters of America National Show Taos, New Mexico. 2003 Coor's Western Art Exhibit and Sale Denver, Colorado. He was featured in the March 2002 issue of Southwest Art Magazine as "Artist to Watch" and was also featured in International Artist Magazine Dec/Jan 2002. In June of 2002 he received the "Best of Show, Artists Choice" at the Masters in Montana show and sale at Chaparral Gallery in Bozeman, Montana. Southwest Art Magazine March 2001 "Artists to Watch." International Artists Magazine Dec/Jan 2002. Gilcrease Museum 2002 American Art in Miniature, Tulsa, Oklahoma.National Art for the Parks Region II Award winner 2001.Award Winner Plein Air Tucson, 1998, 1999

---

## FINE & DECORATIVE ARTS AND DESIGN AUCTION



**232: CATHERINE MASSARO Abstract Expressionism Painting '79**

USD 100 - 200

A vintage oil on canvas painting by listed artist Catherine Massaro done in an abstract expressionism style. A river and city scape in brown tones. Signed and dated '79 lower right recto. Framed. Dimensions:H: 46.5" x L: 32.5" x D: 2"

---



**233: J. CHRIS MOREL Taos, NM Oil/Canvas Painting**

USD 500 - 1,000

A large original oil on canvas painting by listed artist J. Chris Morel. This is a lovely plein air scene from Taos, NM. Signed lower right recto and again on verso. Dated on verso 12/92. Framed. Dimensions: H: 51.5" x L: 27.5" x W: 2"

---



**234: J. CHRIS MOREL Taos, NM Large Oil/Canvas Painting**

USD 500 - 1,000

A gorgeous oil on canvas painting by listed Taos, NM artist J. Chris Morel. Signed lower right recto. Purchased from his Gallery in NM. Nicely framed. Dimensions:H: 48.5" x L: 38.5" x W: 2" Artist Bio:Chris Morel is a landscape painter from the Taos NM area. A majority of Morel's paintings are painted on location throughout Northern New Mexico, the West and many other locations around the country and abroad. Morel most recently was invited to participate in the Coor's National Western Art Exhibit in Denver and exhibited at the Gilcrease Museum in Tulsa, Oklahoma. Maynard Dixon Country 2005, August 24-28 2005, Mt Carmel, Utah. One Man Show Nichols Gallery Taos New Mexico, Opening Sept 24, 2005. Award Winner 2005 George Phippen Museum Western Art Show, Prescott, Arizona. Southwest Art Magazine February 2005 "Best of the West." One Man Show Of Earth and Sky Gallery Gabriele, Pasadena California, February 12 through March 10, 2005. 2005 C.M. Russell Auction of Western Art, Great Falls, Montana.Gilcrease Museum 2004 American Art in Miniature, Tulsa Oklahoma. Award Winner Taos Invites Taos Fall Arts Annual Exhibit , Taos New Mexico. Maynard Dixon Country 2004 Invitational Exhibit and Sale, Mt. Carmel, Utah. 2004 C.M. Russell Museum Auction of Western Art. Great Falls, Montana. Southwest Art Magazine article Feb 2004 "Let it Snow" Featuring Morel's work. One Man Show at Gallery Gabriele in Pasadena, California, Feb 14th to March 12th, 2004. Morel's work featured in North Light Publications (Instructional Art Books) Best of Flower Painting and Simple Secret to Better Painting. 2003 Oil Painters of America National Show Taos, New Mexico. 2003 Coor's Western Art Exhibit and Sale Denver, Colorado. He was featured in the March 2002 issue of Southwest Art Magazine as "Artist to Watch" and was also featured in International Artist Magazine Dec/Jan 2002. In June of 2002 he received the "Best of Show, Artists Choice" at the Masters in Montana show and sale at Chaparral Gallery in Bozeman, Montana. Southwest Art Magazine March 2001 "Artists to Watch." International Artists Magazine Dec/Jan 2002. Gilcrease Museum 2002 American Art in Miniature, Tulsa, Oklahoma.National Art for the Parks Region II Award winner 2001.Award Winner Plein Air Tucson, 1998, 1999

---



**235: WESTINGHOUSE Walnut Stereo/Record Player CONSOLE Mid-Century Modern**

USD 200 - 400

A Mid-Century Modern lift-top console stereo and record player made by Westinghouse. In Walnut cabinet- model: H-M1640 (V 6280). Dimensions:H: 25" x L: 63.5" x W: 17"

---



**236: MEMPHIS MILANO Post-Modern TRIANGLE CHAIR**

USD 200 - 400

A fabulous post-modern triangle chair born out of the Memphis Milano movement. Constructed with diamond plate steel in bright aqua color with black velvet removable chair cushions. Two long steel legs hold the chair upright. Unknown maker. Possibly a prototype piece. If you are a Memphis collector, you know just how hard it is to get your hands on a really great piece, as most of them are in museums. Dimensions:H: 30.5" x L: 20" x W: 20"

---



**237: BRUNI SABLAN Jazz Print Limited Ed. Signed/#**

USD 25 - 75

A signed and numbered Jazz print by artist Bruni Sablan. Framed- no glass. Dimensions:H: 36" x L: 20" x W: 1" Artist Bio:Bruni Sablan was born in Sao Paulo, Brazil circa the mid-twentieth century. Artistry has been her heritage. Her father Joseph Parello, of Sicilian decent, a civil engineer and architect, also painted. Her mother, Clo Parello, of Lebanese decent, was an accomplished classical pianist and beloved piano instructor for many years in the Northern California bay area. Bruni's father introduced her to American jazz at a very early time in her life, she was five years old. She describes him as a "quiet soul" who loved the music of Duke Ellington, Nat King Cole, Artie Shaw, Louis Armstrong, June Christy, Sarah Vaughan, and many more. At the same time, her Sicilian grandfather, Caetano Parello, was teaching her how to "see" art. He was a sculptor/painter himself. When caught "correcting" an Italian masterpiece owned by the Parello family, the child received accolades from her father and grandfather, although she was properly reprimanded for interfering with a great work of art by the rest of the family. Bruni grew up with art and music in her blood, and lived for a while in Los Angeles during a hazy, passionate time when the great Brazilian music masters had

## FINE & DECORATIVE ARTS AND DESIGN AUCTION

become prominent in the U.S.A. She sang and traveled with the likes of Joao Donato and Walter Wanderley. But, painting is what kept her "sane" during those turbulent years. After ten years of marriage and a beautiful daughter, Kristina, -Now a singer, songwriter, and sculptor - Bruni immersed herself in the art and developed (over the last twenty-five years) what has become a legendary body of work, "The Jazz Masters Series by BRUNI." Today, as restless as ever, she continues her pursuit of painting "every great jazz musician who ever lived." Some of her tributes, such as Miles Davis, encompass more than two hundred and eighty canvases. She presently is working simultaneously on five bodies of work: the continuation of the Jazz Masters Series; a tribute to the great humanitarian Mother Teresa; a Tribute to Africa entitled "Africa: Look at Us"; a tribute to the legendary Brazilian musicians and composers, past and present; and her abstract still-life and figurative paintings. Bruni is a highly spiritual being, and feels she connects with the souls of her subjects, which results in a tremendously fast, energetic, and sometimes aggressive venture. This can leave her in a state of complete exhaustion. But, her energy and inspiration seem to get replenished endlessly.



**238: FRANK LLOYD WRIGHT Lithograph Limited Edition SIGNED/#**

USD 50 - 100

A great lithograph print celebrating the brilliant works of architect Frank Lloyd Wright. The piece is signed lower right recto and numbered 1/75 lower left. Nicely framed under glass. Dimensions: H: 34" x H: 22" x W: 1"

---



**239: DANISH MODERN Walnut Pedestal Vase/ Plant STAND**

USD 50 - 100

A tall plinth made of walnut wood. Perfect for a Mid-Century Modern vase or sculpture stand or a plant stand. Dimensions: H: 33.5" x 11" x 11"

---



**240: 2 LANE Mid-Century Modern Marble Top END/ SIDE TABLES**

USD 100 - 300

A pair of vintage Mid-Century Modern marble top end or side tables with concave corners and open space in middle with bottom shelf. Marked on bottom with serial number and style number: 1066 18. Dimensions (each) H: 15" x L: 20" x W: 20"

---



**241: Mid-Century Modern FLOATING Single Drawer NIGHTSTAND**

USD 50 - 100

A Mid-Century Modern single drawer floating nightstand. Teak or Walnut? No maker's mark. Dimensions: H: 29" x L: 20" x W: 17"

---



**242: Woven BAMBOO WICKER Tall VASE BASKET**

USD 25 - 50

A tall woven bamboo wood decorative vase basket. Dimensions: H: 30" x L: 15" x W: 15"

---



**243: PABLO PICASSO "Portrait of Maya w/ her Doll" Limited Ed. Lithograph**

USD 25 - 75

Pablo Picasso's "Portrait of Maya with Her Doll" limited edition lithograph. Numbered 273/500. Collection Domani Picasso lower right recto. On verso: Kearney Public Schools tag. Framed- no glass. Dimensions: H: 34" x L: 30" x W: 2"

---



## FINE & DECORATIVE ARTS AND DESIGN AUCTION



**244: MARILYN MONTGOMERY Watercolor Painting**

USD 25 - 75

A lovely watercolor painting on paper by artist Marilyn Montgomery. Signed lower right recto. Nicely framed under glass. Dimensions:H: 21" x L: 29" x W: 1"

---



**245: PETER MAX George Washington Framed POP ART PRINT**

USD 25 - 75

A framed art print of George Washington by pop artist Peter Max. Nicely framed under glass. Dimensions:H: 14.5" x L: 12.5" x D: 1.5"

---



**246: GUSTAVE BAUMANN Woodblock Print "November"**

USD 50 - 100

A woodblock print by listed artist Gustave Baumann entitled "November". Nicely framed under glass. Includes COA on verso. Dimensions:H: 29.5 x L: 25.5" x D: 1.5" Artist Bio:Born in Madgeburg, Germany, Gustave Baumann is best known for prints made from his detailed hand-carved wood blocks.His family emigrated to the United States when he was a child, and he grew up in Chicago. He returned to Germany to study in Munich at the Kunstgewerbe Schule and then took further training at the Art Institute of Chicago. He spent time in Indiana, and is much associated with the artists who gravitated to Brown County. In that state, Bauman made woodblocks illustrating work by Indiana authors.Baumann and several other artists decided to see first hand the reportedly light, clear air of New Mexico that they had been hearing about from other Chicago artists, and in 1918, he settled in Santa Fe where, for over fifty years, he participated in the art community.He created colored wood blocks from which he made prints, and also became a carver of saints and marionettes, working the the Marionette Theater, and carving his 'little people'. He also did numerous paintings in bright colors.His woodcut subjects are church figures, scenes of sacred Indian pictographs, and landscapes including the Grand Canyon.During the 1930s, he was WPA co-ordinator for Santa Fe.Source:Peggy and Harold Samuels, Encyclopedia of Artists of the American West

---



**247: BOB HOLLOWAY Abe Lincoln S/N Lithograph**

USD 25 - 75

A lithograph on paper of Abe Lincoln by listed Kansas City artist Bob Holloway. Nicely framed under glass. Dimensions:H: 34" x L: 9.5" x D: 1" Artist Bio:Bob Holloway was born in Centralia, Missouri, in 1927. He is an award-winning advertising illustrator and painter. His favorite mediums are oil painting, pen-and-ink and mixed media: pen-and-ink colored with oil. He has exhibited his work at art fairs and shows around the country for 50 years, and exhibits at shows from Cape Cod to Kansas, Minnesota to Texas.Bob Holloway spent 40 years as an art director and illustrator, eventually forming his own agency, and later Bob Holloway Studio and Gallery. He retired from advertising work in 1988 to specialize in paintings of famous figures and settings with a "Where's Waldo?" theme. In 1952 he participated in his first art fair. Since then he has won numerous awards for his paintings and drawings. For 26 years he exhibited at the Country Club Plaza Art Fair in Kansas City, Mo., then moved in 1979 to become co-founder of Art Westport. Submitted by Scott Wilder.

---



**248: ASTERIO PASCOLINI Italian Mid-Century Modern Painting**

USD 25 - 75

An original watercolor/ gouache painting on paper by listed Italian artist Asterio Pascolini. Signed and dated '68 lower right recto. Nicely framed under glass. Dimensions:H: 33.5" x L: 25" x D: 1" Artist Bio:Asterio Pascolini was born in Italy in 1932. He has studied in Florence and at the Kansas City Art Institute. He started sketching around 1945 as a young teenager, and most of his techniques are self taught. It was in 1958 that Asterio came to the United States to work for Hallmark Cards in Kansas City as an artist. He later became a designer and in time became Hallmark's head artist. He has since retired from Hallmark and now devotes his full time to painting.Over many years Asterio has traveled all over the United States and as well as Europe and especially Italy. In Pascolini's paintings one comes to realize his tremendous concern for human accomplishments, but most of all his tremendous love for nature. To reach such a close relationship, Asterio travels by back-roads through the countryside for countless hours revisiting his favorite subject matter to sketch them from different angles and to present them with their best color and light. Only after the mood and composition seem absolutely suited to the subject does the painting begin.Asterio's most familiar approach is characterized by loose simplicity of color and composition, painting quickly to take advantage of the freshness and spontaneous feeling of watercolor. He first captures the shape and mood of the piece, then working over this wet into wet impression, he reinforces his central subject matter with a dry brush treatment. His use of negative space becomes as important to the composition as the acrylic element.Although composition, mood, pattern, color, and texture are important, Pascolini puts deeper significance in his paintings. Through his masterful technique, the warmth and dignity of a vanishing era are brilliantly portrayed. Asterio does wonders capturing the sadly disappearing Americana. Few contemporary works are more consistently rewarding and profoundly moving.Asterio Pascolini watercolors are easily identified as a large majority of his works are simply signed "Asterio". He has a large national following, but especially so at home in Johnson County, Kansas just outside Kansas City. He resides there today with his wife Barbara, also a very talented artist in her own right.Source:Majority adopted from a newspaper or magazine article of unknown origin c.1970's. The rest written by Scott Wilder, art collector and research specialist of Kansas artists.

---

## FINE & DECORATIVE ARTS AND DESIGN AUCTION



**249: CURT FRANKENSTEIN "Telephone Visit" Hand Colored Etching S/N**

USD 50 - 100

A hand-colored etching entitled "The Telephone Visit" by listed artist Curt Frankenstein. Pencil titled, signed and numbered 23/75 lower right. Nicely framed under glass. Artist bio on verso. Dimensions:H: 26" x L: 32" x W: 1.5" Artist bio:Curt Frankenstein (1920-2009) was a Wilmette, Illinois surrealist painter and printmaker. He came to the Chicago area from Germany when he was 25. He attended the American Academy of Art, the Art Institute of Chicago and the Otis Art institute of Los Angeles.Subsequently he took courses in Lithography under Max Kahn at the Art Institute and in Etching under Hedi Bak at Studio 22 in Chicago. A long time resident of Wilmette, he had a studio and print shop there with his own etching press.Curt Frankenstein first succeeded in selling his paintings in 1954 at the 57th Street Art Fair. He participated in art fairs ever since, sometimes attending as many as six per year. A Surrealist Painter:It was during the 1950s when abstract art was the attraction that Frankenstein found his calling. He stayed devoted to representational art but combined it with surrealism---breaking up realist images to suggest mystery and fantasy. He used familiar images in unfamiliar surprising ways. His paintings are realistic, but at the same time not real. His aim was to break up accustomed views of the world and to suggest that there is more to reality than meets the eye.The following is a review from Wilmette Life September 4, 1997, Pioneer Press"I like that tension between fantasy and reality. My painting is realistic, but at the same time it is not real."By LISA STEIN



**250: HUBERT HILSCHER (1924-1999) Leopard Lithograph Print Poster**

USD 25 - 75

A lithograph print/ poster of "Leopard" 1970 by artist Hubert Hilscher (1924-1999). Framed, no glass. Dimensions:H: 40" x L: 29" x D: 1.5"



**251: ROBERT INDIANA Decade Autoportraits VINALHAVEN SUITE Serigraph '71**

USD 500 - 1,000

A serigraph print on paper by listed artist Robert Indiana (1928-2018). This is 1971 from his Decade Autoportraits Vinalhave Suite. Ink on Fabriano Classico woven cotton/paper blend with blindstamp of printer Domberger K.G. Stuttgart. Unsigned. This is a printer's proof done by Luitpold Domberger before the artist proof is produced. Provenance: Given to Hallmark artist in Kansas City from son (Michael Domberger) of the printer (Luitpold Domberger) as a gift for her collaboration on graphic arts calendars of Pop Art and Op Art printer by Domberger Press. Dimensions:Image size: 24" x 24"Sheet size: 26 7/8" x 26 7/8"



**252: ROBERT INDIANA Decade Autoportraits VINALHAVEN SUITE Serigraph '70**

USD 500 - 1,000

A serigraph print on paper by listed artist Robert Indiana (1928-2018). This is 1970 from his Decade Autoportraits Vinalhave Suite. Ink on Fabriano Classico woven cotton/paper blend with blindstamp of printer Domberger K.G. Stuttgart. Unsigned. This is a printer's proof done by Luitpold Domberger before the artist proof is produced. Provenance: Given to Hallmark artist in Kansas City from son (Michael Domberger) of the printer (Luitpold Domberger) as a gift for her collaboration on graphic arts calendars of Pop Art and Op Art printer by Domberger Press. Dimensions:Image size: 24" x 24"Sheet size: 26 7/8" x 26 7/8"



**253: ROBERT INDIANA Decade Autoportraits VINALHAVEN SUITE Serigraph '74**

USD 500 - 1,000

A serigraph print on paper by listed artist Robert Indiana (1928-2018). This is 1974 from his Decade Autoportraits Vinalhave Suite. Ink on Fabriano Classico woven cotton/paper blend with blindstamp of printer Domberger K.G. Stuttgart. Unsigned. This is a printer's proof done by Luitpold Domberger before the artist proof is produced. Provenance: Given to Hallmark artist in Kansas City from son (Michael Domberger) of the printer (Luitpold Domberger) as a gift for her collaboration on graphic arts calendars of Pop Art and Op Art printer by Domberger Press. Dimensions:Image size: 24" x 24"Sheet size: 26 7/8" x 26 7/8"



**254: ROBERT INDIANA Decade Autoportraits VINALHAVEN SUITE Serigraph '78**

USD 500 - 1,000

A serigraph print on paper by listed artist Robert Indiana (1928-2018). This is 1978 from his Decade Autoportraits Vinalhave Suite. Ink on Fabriano Classico woven cotton/paper blend with blindstamp of printer Domberger K.G. Stuttgart. Unsigned. This is a printer's proof done by Luitpold Domberger before the artist proof is produced. Provenance: Given to Hallmark artist in Kansas City from son (Michael Domberger) of the printer (Luitpold Domberger) as a gift for her collaboration on graphic arts calendars of Pop Art and Op Art printer by Domberger Press. Dimensions:Image size: 24" x 24"Sheet size: 26 7/8" x 26 7/8"



## FINE & DECORATIVE ARTS AND DESIGN AUCTION



**255: ROBERT INDIANA Decade Autoportraits VINALHAVEN SUITE Serigraph '72**

USD 500 - 1,000

A serigraph print on paper by listed artist Robert Indiana (1928-2018). This is 1972 from his Decade Autoportraits Vinalhave Suite. Ink on Fabriano Classico woven cotton/paper blend with blindstamp of printer Domberger K.G. Stuttgart. Unsigned. This is a printer's proof done by Luitpold Domberger before the artist proof is produced. Provenance: Given to Hallmark artist in Kansas City from son (Michael Domberger) of the printer (Luitpold Domberger) as a gift for her collaboration on graphic arts calendars of Pop Art and Op Art printer by Domberger Press. Dimensions:Image size: 24" x 24"Sheet size: 26 7/8" x 26 7/8"

---



**256: ROBERT INDIANA Decade Autoportraits VINALHAVE SUITE Serigraph '76**

USD 500 - 1,000

A serigraph print on paper by listed artist Robert Indiana (1928-2018). This is 1976 from his Decade Autoportraits Vinalhave Suite. Ink on Fabriano Classico woven cotton/paper blend with blindstamp of printer Domberger K.G. Stuttgart. Unsigned. This is a printer's proof done by Luitpold Domberger before the artist proof is produced. Provenance: Given to Hallmark artist in Kansas City from son (Michael Domberger) of the printer (Luitpold Domberger) as a gift for her collaboration on graphic arts calendars of Pop Art and Op Art printer by Domberger Press. Dimensions:Image size: 24" x 24"Sheet size: 26 7/8" x 26 7/8"

---



**257: ROBERT INDIANA Decade Autoportraits VINALHAVEN SUITE '77**

USD 500 - 1,000

A serigraph print on paper by listed artist Robert Indiana (1928-2018). This is 1977 from his Decade Autoportraits Vinalhave Suite. Ink on Fabriano Classico woven cotton/paper blend with blindstamp of printer Domberger K.G. Stuttgart. Unsigned. This is a printer's proof done by Luitpold Domberger before the artist proof is produced. Provenance: Given to Hallmark artist in Kansas City from son (Michael Domberger) of the printer (Luitpold Domberger) as a gift for her collaboration on graphic arts calendars of Pop Art and Op Art printer by Domberger Press. Dimensions:Image size: 24" x 24"Sheet size: 26 7/8" x 26 7/8"

---



**258: ROBERT INDIANA Decade Autoportraits VINALHAVEN SUITE Serigraph '73**

USD 500 - 1,000

A serigraph print on paper by listed artist Robert Indiana (1928-2018). This is 1973 from his Decade Autoportraits Vinalhave Suite. Ink on Fabriano Classico woven cotton/paper blend with blindstamp of printer Domberger K.G. Stuttgart. Unsigned. This is a printer's proof done by Luitpold Domberger before the artist proof is produced. Provenance: Given to Hallmark artist in Kansas City from son (Michael Domberger) of the printer (Luitpold Domberger) as a gift for her collaboration on graphic arts calendars of Pop Art and Op Art printer by Domberger Press. Dimensions:Image size: 24" x 24"Sheet size: 26 7/8" x 26 7/8"

---



**259: ROBERT INDIANA Decade Autoportraits VINALHAVEN SUITE Serigraph '75**

USD 500 - 1,000

A serigraph print on paper by listed artist Robert Indiana (1928-2018). This is 1975 from his Decade Autoportraits Vinalhave Suite. Ink on Fabriano Classico woven cotton/paper blend with blindstamp of printer Domberger K.G. Stuttgart. Unsigned. This is a printer's proof done by Luitpold Domberger before the artist proof is produced. Provenance: Given to Hallmark artist in Kansas City from son (Michael Domberger) of the printer (Luitpold Domberger) as a gift for her collaboration on graphic arts calendars of Pop Art and Op Art printer by Domberger Press. Dimensions:Image size: 24" x 24"Sheet size: 26 7/8" x 26 7/8"

---



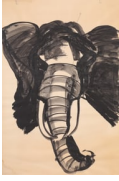
**260: LOU MARAK Ostrich Painting 1960's**

USD 25 - 75

A vintage (circa 1960's) ink on paper painting of an ostrich. Unframed. Cardboard Backing (not attached).Dimensions:H: 36" x L: 24" x W: 1/16" (flat)Provenance: From the estate of Philomene Dosek Bennet and Louis Marak.

---

## FINE & DECORATIVE ARTS AND DESIGN AUCTION



**261: LOU MARAK Elephant Painting 1960's**

USD 25 - 75

An ink on paper painting of an elephant by listed artist Louis Marak. Unsigned. Provenance: From the estate of Philomene Dosek Bennet and Lou Marak. Dimensions:H: 36" x L: 24" x W: 1/16" (flat)

---



**262: MEMPHIS STYLE German Serigraph CALENDAR DOMBERGER Press**

USD 25 - 75

A vintage 1980's Memphis Milano style calendar entitled A bis Z (A to Z). The pages are in bright contrasting colors and have flip page letters to change the months. Designed by artist Martina Westenberger. Serigraphs printed by Domberger Press. Calendar is in German. Provenance: Given to Hallmark artist in Kansas City from son (Michael Domberger) of the printer (Luitpold Domberger) as a gift for her collaboration on graphic arts calendars of Pop Art and Op Art serigraphs printed by the Domberger Press in the 1970's and 1980's. Dimensions:H: 19" x L: 19" x D: 1/8"

---



**263: MEMPHIS MILANO Serigraphs German PUZZLE CALENDAR Domberger**

USD 25 - 75

A vintage 1980's Memphis Milano style calendar entitled 1 PLUS 1 (One plus one). The pages are in bright contrasting colors and have missing letters in each month which form a puzzle and hidden message. Designed by artist Martina Westenberger. Serigraphs printed by Domberger Press. Calendar is in German. Provenance: Given to Hallmark artist in Kansas City from son (Michael Domberger) of the printer (Luitpold Domberger) as a gift for her collaboration on graphic arts calendars of Pop Art and Op Art serigraphs printed by the Domberger Press in the 1970's and 1980's. Dimensions:H: 19" x L: 19" x D: 1/2"

---



**264: 1974 POP ART/ OP ART Serigraph German CALENDAR DOMBERGER**

USD 100 - 200

A vintage 1974 German calendar with original serigraphs by listed Pop and Op artists. Includes 12 full color original serigraphs from the following artists: Peter Max, Gerd Winner, Annie Albers, Herbert Bayer, Luitpold Domberger, Aknai Tamas, Elaine Kurz, Rolf Rappaz, Sanford Wurmfeld, Eugenio Carmi, Max Ackerman. Printed by Domberger Press. Calendar is in German. Provenance: Given to Hallmark artist in Kansas City from son (Michael Domberger) of the printer (Luitpold Domberger) as a gift for her collaboration on graphic arts calendars of Pop Art and Op Art serigraphs printed by the Domberger Press in the 1970's and 1980's. Dimensions:H: 17" x L: 19" x D: 1/2"

---



**265: 1987 GUNTER MURR Op Art German CALENDAR DOMBERGER Press**

USD 25 - 75

A vintage 1987 OP ART calendar designed by Gunther Murr. The pages are translucent and layered, so each flip of the page reveals a new design. Serigraphs and foils printed by Domberger Press. Calendar is in German. Provenance: Given to Hallmark artist in Kansas City from son (Michael Domberger) of the printer (Luitpold Domberger) as a gift for her collaboration on graphic arts calendars of Pop Art and Op Art serigraphs printed by the Domberger Press in the 1970's and 1980's. Dimensions:H: 23" x L: 19" x D: 1/2"

---



**266: WILLI BAUMEISTER Serigraphs CALENDAR 1997 DOMBERGER Press**

USD 25 - 75

A vintage 1997 calendar featuring serigraphs by artist Willi Baumeister from the Stuttgart City Art Gallery collection. Serigraphs printed by Domberger Press. Calendar is in German. Provenance: Given to Hallmark artist in Kansas City from son (Michael Domberger) of the printer (Luitpold Domberger) as a gift for her collaboration on graphic arts calendars of Pop Art and Op Art serigraphs printed by the Domberger Press in the 1970's and 1980's. Dimensions:H: 23" x L: 19" x D: 1/2"

---

## FINE & DECORATIVE ARTS AND DESIGN AUCTION



### 267: CONNY J. WINTER Photography Lithograph Calendar Domberger Press

USD 25 - 75

A vintage 1988 calendar featuring the photography of Conny J. Winter in and around Stuttgart, Germany. Connie Winter is the daughter of listed artist Christa Winter. Lithographs printed by Domberger Press. Calendar is in German. Provenance: Given to Hallmark artist in Kansas City from son (Michael Domberger) of the printer (Luitpold Domberger) as a gift for her collaboration on graphic arts calendars of Pop Art and Op Art serigraphs printed by the Domberger Press in the 1970's and 1980's. Dimensions: H: 27" x L: 19" x D: 1/2"



### 268: BETTINA KIZELE / MICHAEL DOMBERGER Laser-Art Calendar 1980s Signed/#

USD 25 - 75

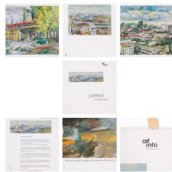
A vintage 1980's laser-art calendar with cut out images and color backgrounds on following pages. This is a limited edition 7/300 signed and numbered piece. Designed and signed by Bettina Kizele and Michael Domberger. Serigraphs printed by Domberger Press. Calendar is in German. Provenance: Given to Hallmark artist in Kansas City from son (Michael Domberger) of the printer (Luitpold Domberger) as a gift for her collaboration on graphic arts calendars of Pop Art and Op Art serigraphs printed by the Domberger Press in the 1970's and 1980's. Dimensions: H: 17" x L: 13" x D: 1/2"



### 269: SALVADOR DALI Horse from Diving Comedy Lithograph L.E. 1977 Colliers

USD 100 - 200

A lithograph "Horse from Divine Comedy" by surrealist artist Salvador Dali. Signed in the plate. Nicely framed under glass. COA on verso: Collier's Art Corp. Los Angeles, CA 1977. Limited Edition 233/500. Framed Dimensions: H: 19.5" x L: 15.5" x D: 1"



### 270: JÜRGEN LEIPPERT View of Berlin Serigraphs German Calendar Domberger Press

USD 25 - 75

A vintage calendar featuring serigraphs by artist Jürgen Leipper entitled "Ein Blick auf Berlin" (A View of Berlin). Serigraphs printed by Domberger Press. Calendar is in German. Provenance: Given to Hallmark artist in Kansas City from son (Michael Domberger) of the printer (Luitpold Domberger) as a gift for her collaboration on graphic arts calendars of Pop Art and Op Art serigraphs printed by the Domberger Press in the 1970's and 1980's. Dimensions: H: 23.5" x L: 19" x D: 1/2"



### 271: ZEIT GLEICH Pop Art Serigraphs Calendar ROY LICHTENSTEIN RICHARD ESTES +

USD 100 - 200

A 2002 calendar entitled "Zeit Gleich" featuring original full page serigraphs by Pop Artists artists: Robert Indiana, Richard Estes, Peter Foeller, Jonathan Lasker, Tom Mars, Roy Lichtenstein, Tomi Ungerer, Anton Stankowski, and more... Serigraphs printed by Domberger Press. Calendar is in German. Provenance: Given to Hallmark artist in Kansas City from son (Michael Domberger) of the printer (Luitpold Domberger) as a gift for her collaboration on graphic arts calendars of Pop Art and Op Art serigraphs printed by the Domberger Press in the 1970's and 1980's. Dimensions: H: 23.25" x L: 19" x D: 1/2"



### 272: MARTINA WESTENBERGER Memphis Style Serigraphs German Calendar

USD 25 - 75

A 1990 Memphis Style calendar designed by Martina Westenberger. The calendar features bright contrasting colors and flip page letters to spell different months of the year (in German). Serigraphs printed by Domberger Press. Calendar is in German. Provenance: Given to Hallmark artist in Kansas City from son (Michael Domberger) of the printer (Luitpold Domberger) as a gift for her collaboration on graphic arts calendars of Pop Art and Op Art serigraphs printed by the Domberger Press in the 1970's and 1980's. Dimensions: H: 19.25" x L: 19" x D: 1/2"

## FINE & DECORATIVE ARTS AND DESIGN AUCTION



### 273: PETER LORENZ Pointillism/ Photograph Serigraph Calender Domberger Press

USD 25 - 75

A 1986 calendar with pointillism graphics and photography by Peter Lorenz. Serigraphs printed by Domberger Press. Calendar is in German. Provenance: Given to Hallmark artist in Kansas City from son (Michael Domberger) of the printer (Luitpold Domberger) as a gift for her collaboration on graphic arts calendars of Pop Art and Op Art serigraphs printed by the Domberger Press in the 1970's and 1980's. Dimensions: H: 19" x L: 23.75" x D: 1/2"

---



### 274: ANTIQUE CHINESE Painted Wooden DOOR #1

USD 100 - 200

An antique wooden Chinese door panel hand painted with boy holding pomegranate. Nice antique craquelure to the surface. This is a thick door with hinge on one side and latch on verso. 20th century: Q'ing Dynasty. Dimensions: H: 44" x L: 21" x D: 3.25"

---



### 275: ANTIQUE CHINESE Painted Wooden DOOR #2

USD 100 - 200

An antique wooden Chinese door panel hand painted with boy holding pomegranate. Nice antique craquelure to the surface. This is a thick door with hinge on one side and latch on verso. Dimensions: H: 44" x L: 21" x D: 3.25"

---



### 276: LANE Mid-Century Modern Rolling End Table Accordion Slide Screen Door

USD 100 - 200

A rare Mid-Century Modern rolling end/side table with accordion sliding screen door. Made by Lane; style no. 1062 21in Walnut wood. Marked on bottom. Dimensions: H: 18" x L: 29" x D: 25.5"

---



### 277: ADRIAN PEARSALL Craft Associates MCM Rolling Lounge Chair Walnut Legs

USD 500 - 1,000

A vintage 1960's lounge chair with walnut legs on rollers designed by Adrian Pearsall for Craft Associates. Possibly recovered? Nice soft cushions. No stains or damage to light aqua raw silk fabric. Dimensions: H: 27" x L: 30" x W: 33"

---

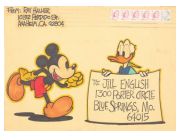


### 278: JAPANESE LACQUER Room Screen W/ Applied SEMI-PRECIOUS STONES

USD 100 - 200

A lovely scenic Japanese screen in black lacquer with applied/inset semi-precious stones. On verso, lacquer with incised, gilt scenes. 6 panels. Dimensions: H: 72" x L: 96 x D: 1.5" Each panel measures: H: 72 x L: 16 x D: 1.5"

---



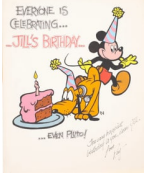
### 279: RAY HALLER Original Walt Disney Artist Cartoon Drawing #1 Provenance

USD 50 - 100

An ink on manilla envelope drawing of Mickey Mouse and Donald Duck by Disney artist, author and merchandise host Ray Haller. Double-sided with artwork on recto and verso. Addressed to a friend with artist's return address. Dimensions: H: 14.5" x L: 11.5" x W: 1/16th (flat) Provenance: Jill English collection, United States. History: Ray Haller had joined a dance competition at Disneyland in the 1980s. When his original partner became ill and could not participate, Ms. English volunteered to take her place. This sparked a life-long friendship between the two and Ray Haller consequently sent many original Disney works of art to her on a regular basis.

---

## FINE & DECORATIVE ARTS AND DESIGN AUCTION



### 280: RAY HALLER Original Walt Disney Artist Cartoon Drawing #2 Provenance

USD 50 - 100

An ink on illustration board drawing of Mickey Mouse and Pluto by Disney artist, author and merchandise host Ray Haller. Inscribed to a friend, Jill English, for her Birthday. Signed lower right recto. Dimensions:H: 15" x L: 12" x W: 1/8th (flat)Provenance: Jill English collection, United States. History: Ray Haller had joined a dance competition at Disneyland in the 1980s. When his original partner became ill and could not participate, Ms. English volunteered to take her place. This sparked a life-long friendship between the two and Ray Haller consequently sent many original Disney works of art to her on a regular basis.



### 281: 1973 3-D Op/Art Serigraphs Calendar Domberger Press WOLFGANG HEUWINKEL

USD 25 - 75

A vintage 1973 Op Art- pop-up three dimensional calendar designed by Wolfgang Heuwinkel. Printed by Domberger Press. Instructions for how to create the pop-up art on inside cover.Calendar is in German. Dimensions:H: 19.25" x L: 19.5" x D: 1/2"



### 282: BRYAN BUCK Post-Modern Bronze Sculpture "Bob"

USD 100 - 200

A whimsical bronze sculpture of a portly man attempting to ascend a small rope entitled "Bob" by listed sculpture artist Bryan Buck (1953-2018). Mounted to wooden base. Titled and Signed on base. Dimensions:H: 17.5" x L: 7.5" x D: 7.5"



### 283: LOU MARAK 23" Studio Art Pottery Sculpture 1960s

USD 100 - 300

A large amorphic studio art pottery sculpture by listed artist Louis Marak. Lovely blue partial glaze. Initialed on base LM. Provenance:From the estate of Lou Marak and Philomene Dosek Bennett. Dimensions:H: 23" x L: 14" x D: 14"



### 284: LOU MARAK Large Studio Art Pottery Modernist Sculpture Bee Hive

USD 100 - 300

A large "beehive" studio art pottery sculpture by listed artist Louis Marak. Partial aqua glaze with holes. Circa 1970's.Provenance:From the estate of Lou Marak and Philomene Dosek Bennett. Dimensions:H: 16" x L: 18.5" x D: 18.5"



### 285: Pair KOSTA BODA Art Glass Bottles w/ Stoppers Signed

USD 25 - 75

A pair of Kosta Boda art glass bottles with stoppers. Signed on base. Great colors! Could be perfume bottles, incense oil, or other decorative use. Dimensions: (Each)H: 11" x 6" x 4"



### 286: BARRO NEGRO 24" Mexican Pottery Lantern Vase

USD 25 - 50

A large black pottery (Barro Negro) lantern with perforated sides for light dispersion. There is a hole in the bottom for a candle or lantern. Perfect for indoor decor or for a garden room/ outdoors patio. Unmarked.Dimensions:H: 24" x 14" x 14"



## FINE & DECORATIVE ARTS AND DESIGN AUCTION



**287: CHINESE Carved Wood Figural SCULPTURE Glass Eyes**

USD 25 - 75

A large Chinese carved wood figural sculpture with inset glass eyes. Dimensions:H: 19.5" x L: 7.5" x D: 6.5"

---



**288: ROYAL HAEGER Mid-Century Modern Textured Pottery Pitcher**

USD 20 - 50

A Mid-Century Modern white textured pottery pitcher with aqua interior glaze. Made by Royal Haeger. Marked on base. Dimensions:H: 16" x L: 8" x W: 7"

---



**289: HOLLYWOOD REGENCY STIFFEL Glass Lamp Spindle Base**

USD 25 - 75

A vintage Hollywood Regency diffused white glass with gold wheat design lamp. Great spindle base and glass lamp shade. you can put a fabric shade over the glass shade if desired. Made by Stiffel. Dimensions:H: 34.5" x L: 8" x D: 8"

---



**290: J. RENEE Vintage Champagne Cocktail Handbag**

USD 20 - 50

A vintage champagne colored cocktail handbag with shoulder strap made by J. Renee. Dimensions:H: 4" x L: 10" x D: 2.25"

---



**291: SALVATORE FERRAGAMO Designer Crocodile Handbag w/ Dust Bag**

USD 50 - 100

A Salvatore Ferragamo designer brown crocodile handbag with dust bag. Dimensions:H: 6" x 7.5" x D: 3"

---



**292: JAPANESE STYLE CERAMIC LAMP MCM Peacocks in Persimmon Tree**

USD 25 - 75

A vintage Mid-Century ceramic Japanese style lamp with peacocks and Persimmon trees. No shade. Dimensions:H: 23" x L: 6.5" x D: 6.5"

---



**293: Asian Style Blue & White CERAMIC VASE LAMP**

USD 25 - 75

An Asian style blue and white ceramic vase lamp with brass base. No shade. Dimensions:H: 26.5" x L: 5" x D: 5"

---



**294: Chinese SANGE DE BOEUF Vase**

USD 25 - 75

A Chinese Sange de Boeuf (oxblood) pear shaped ceramic vase. Felted Base. Dimensions:H: 11" x L: 6.5" x D: 6.5"

---

## FINE & DECORATIVE ARTS AND DESIGN AUCTION



### 295: JAPANESE Large Pottery 18" Charger w/ Cherry Blossom Design

USD 25 - 75

A large Japanese pottery charger bowl/plate with cherry blossom painted design. Unmarked. Dimensions:H: 3" x L: 17.5" x D: 17.5"

---



### 296: INGRID LTD 25 Pc Set Green Mid-Century Modern Plastic Dishes

USD 25 - 50

A set of Mid-Century Modern green plastic dishes made by Ingrid Ltd. Includes: 9- 10" Plates 11- 8" Plates 7- 5.5" x 2" Bowls (1 bowl is chipped).

---



### 297: 2x BERNARD MARTIN Original Engraved Print Plates & Prints THOMAS HART BENTON Student

USD 25 - 75

A pair of original engraved printing plates and six Wildlife prints of those plates by listed artist Bernard Martin. Martin was a student of Thomas Hart Benton at the KC Art Institute. Print Plate Dimensions:H: 5.75" x L: 13.75" x W: 1/8" Print Dimensions:H: 9" x L: 19" x W: 1/16" (flat) Artist Biography: Born Hiawatha, June 12, 1912; died Lake Lotawana, MO, July 7, 1998. Illustrator. Painter, specialized in birds. Was a pupil of Thomas Hart Benton at the Kansas City Art Institute. He illustrated juvenile stories written by his brother. Offset Lithography, Inc judged one of the books he illustrated, *Rosy, Nose*, (1946) one of the outstanding juvenile books of 1946. A resident of Lake Lotawana, MO, he specialized in paintings of meadowlarks, mallards, and other birds. His work appeared in many publications including *The Kansas City Star*, *Turkey Call* (cover image *Ozark's Royalty*, September/October 1987, and *Wildlife Art News*. His paintings raised thousands of dollars for the Missouri Ducks Unlimited chapter. In 1997, a muscle disease forced him to quit painting. SOURCES: Susan Craig, "Biographical Dictionary of Kansas Artists (active before 1945)" Sain, Lydia. *Kansas Artists*, compiled by Lydia Sain from 1932 to 1948. Typed Manuscript, 1948.; *Festival of Kansas Arts and Crafts*. Catalog: *Arts and Crafts of Kansas: an Exhibition held in Lawrence, Feb. 18-22, 1948 in the Community Building*. Lawrence: World Co., 1948; AskArt, www.askart.com, accessed Dec. 21, 2005; Family Search. Version 2.5.0. Salt Lake City: Church of Jesus Christ of Latter Day Saints, 2002. www.FamilySearch.org accessed July 17, 2006.

---



### 298: BERNARD MARTIN Original Engraving Print Plate & 10 Prints THOMAS HART BENTON Student

USD 25 - 75

An original engraved printing plate and ten Wildlife prints of that plate by listed artist Bernard Martin. Martin was a student of Thomas Hart Benton at the KC Art Institute. Print Plate Dimensions:H: 6" x L: 14.75" x W: 1/8" Print Dimensions:H: 10" x L: 18.25" x W: 1/16" (flat) Artist Biography: Born Hiawatha, June 12, 1912; died Lake Lotawana, MO, July 7, 1998. Illustrator. Painter, specialized in birds. Was a pupil of Thomas Hart Benton at the Kansas City Art Institute. He illustrated juvenile stories written by his brother. Offset Lithography, Inc judged one of the books he illustrated, *Rosy, Nose*, (1946) one of the outstanding juvenile books of 1946. A resident of Lake Lotawana, MO, he specialized in paintings of meadowlarks, mallards, and other birds. His work appeared in many publications including *The Kansas City Star*, *Turkey Call* (cover image *Ozark's Royalty*, September/October 1987, and *Wildlife Art News*. His paintings raised thousands of dollars for the Missouri Ducks Unlimited chapter. In 1997, a muscle disease forced him to quit painting. SOURCES: Susan Craig, "Biographical Dictionary of Kansas Artists (active before 1945)" Sain, Lydia. *Kansas Artists*, compiled by Lydia Sain from 1932 to 1948. Typed Manuscript, 1948.; *Festival of Kansas Arts and Crafts*. Catalog: *Arts and Crafts of Kansas: an Exhibition held in Lawrence, Feb. 18-22, 1948 in the Community Building*. Lawrence: World Co., 1948; AskArt, www.askart.com, accessed Dec. 21, 2005; Family Search. Version 2.5.0. Salt Lake City: Church of Jesus Christ of Latter Day Saints, 2002. www.FamilySearch.org accessed July 17, 2006.

---



### 299: BERNARD MARTIN Orig. Engraved Printer Plate & 2 Prints THOMAS HART BENTON Student

USD 25 - 75

An original engraved printing plate and two Wildlife prints of that plate by listed artist Bernard Martin. Martin was a student of Thomas Hart Benton at the KC Art Institute. Print Plate Dimensions:H: 6" x L: 15" x W: 1/8" Print Dimensions: H: 12.5" x L: 19" x W: 1/16" (flat) Artist Biography: Born Hiawatha, June 12, 1912; died Lake Lotawana, MO, July 7, 1998. Illustrator. Painter, specialized in birds. Was a pupil of Thomas Hart Benton at the Kansas City Art Institute. He illustrated juvenile stories written by his brother. Offset Lithography, Inc judged one of the books he illustrated, *Rosy, Nose*, (1946) one of the outstanding juvenile books of 1946. A resident of Lake Lotawana, MO, he specialized in paintings of meadowlarks, mallards, and other birds. His work appeared in many publications including *The Kansas City Star*, *Turkey Call* (cover image *Ozark's Royalty*, September/October 1987, and *Wildlife Art News*. His paintings raised thousands of dollars for the Missouri Ducks Unlimited chapter. In 1997, a muscle disease forced him to quit painting. SOURCES: Susan Craig, "Biographical Dictionary of Kansas Artists (active before 1945)" Sain, Lydia. *Kansas Artists*, compiled by Lydia Sain from 1932 to 1948. Typed Manuscript, 1948.; *Festival of Kansas Arts and Crafts*. Catalog: *Arts and Crafts of Kansas: an Exhibition held in Lawrence, Feb. 18-22, 1948 in the Community Building*. Lawrence: World Co., 1948; AskArt, www.askart.com, accessed Dec. 21, 2005; Family Search. Version 2.5.0. Salt Lake City: Church of Jesus Christ of Latter Day Saints, 2002. www.FamilySearch.org accessed July 17, 2006.

---



## FINE & DECORATIVE ARTS AND DESIGN AUCTION



### 300: BERNARD MARTIN 2 Orig. Engraved Printer Plates & 10 Prints THOMAS HART BENTON Student

USD 25 - 75

A pair of original engraved printing plates and ten Wildlife prints of those plates by listed artist Bernard Martin. Martin was a student of Thomas Hart Benton at the KC Art Institute. the prints are all varied in size. Print Plate Dimensions:H: 6.75" x L: 14.75" x W: 1/8" Print Dimensions:Largest: H: 13" x L: 19" x W: 1/16" (flat)Smallest: H: 8" x L: 19" x W: 1/16" (flat)Artist Biography:Born Hiawatha, June 12, 1912; died Lake Lotawana, MO, July 7, 1998. Illustrator. Painter, specialized in birds. Was a pupil of Thomas Hart Benton at the Kansas City Art Institute. He illustrated juvenile stories written by his brother. Offset Lithography, Inc judged one of the books he illustrated, Rosy, Nose, (1946) one of the outstanding juvenile books of 1946.A resident of Lake Lotawana, MO, he specialized in paintings of meadowlarks, mallards, and other birds. His work appeared in many publications including The Kansas City Star, Turkey Call ( (cover image Ozark's Royalty, September/October 1987, and Wildlife Art News. His paintings raised thousands of dollars for the Missouri Ducks Unlimited chapter. In 1997, a muscle disease forced him to quit painting.SOURCES:Susan Craig, "Biographical Dictionary of Kansas Artists (active before 1945)"Sain, Lydia. Kansas Artists, compiled by Lydia Sain from 1932 to 1948. Typed Manuscript, 1948.; Festival of Kansas Arts and Crafts. Catalog: Arts and Crafts of Kansas: an Exhibition held in Lawrence, Feb. 18-22, 1948 in the Community Building. Lawrence: World Co., 1948; AskArt, www.askart.com, accessed Dec. 21, 2005; Family Search. Version 2.5.0. Salt Lake City: Church of Jesus Christ of Latter Day Saints, 2002. www.FamilySearch.org accessed July 17, 2006.



### 301: HARRY S. TRUMAN Original Engraved Printer's Plate BY LARRY K. MANSKER

USD 25 - 75

An original engraved printer's plate of President Harry S. Truman by artist Larry K. Mansker. This print was limited to 200. Full body portrait with two fainter full body portraits on either side of him; one in his uniform and the other as an older man. The plate is marked Van Der Cook lower recto. There is a red letter B on recto.This image was featured in the 1981 issue of "The Officer." Dimensions:H: 10" x L: 6.5" x D: 1/8"



### 302: BERNARD MARTIN Orig. Engraved Printer's Plate & 9 Prints THOMAS HART BENTON Student

USD 25 - 75

A pair of original engraved printing plates and nine Wildlife prints of those plates by listed artist Bernard Martin. Martin was a student of Thomas Hart Benton at the KC Art Institute. Print Plate Dimensions:H: 6" x L: 15" x W: 1/8" Print Dimensions:H: 9" x L: 17.5" x W: 1/16" (flat)Artist Biography:Born Hiawatha, June 12, 1912; died Lake Lotawana, MO, July 7, 1998. Illustrator. Painter, specialized in birds. Was a pupil of Thomas Hart Benton at the Kansas City Art Institute. He illustrated juvenile stories written by his brother. Offset Lithography, Inc judged one of the books he illustrated, Rosy, Nose, (1946) one of the outstanding juvenile books of 1946.A resident of Lake Lotawana, MO, he specialized in paintings of meadowlarks, mallards, and other birds. His work appeared in many publications including The Kansas City Star, Turkey Call ( (cover image Ozark's Royalty, September/October 1987, and Wildlife Art News. His paintings raised thousands of dollars for the Missouri Ducks Unlimited chapter. In 1997, a muscle disease forced him to quit painting.SOURCES:Susan Craig, "Biographical Dictionary of Kansas Artists (active before 1945)"Sain, Lydia. Kansas Artists, compiled by Lydia Sain from 1932 to 1948. Typed Manuscript, 1948.; Festival of Kansas Arts and Crafts. Catalog: Arts and Crafts of Kansas: an Exhibition held in Lawrence, Feb. 18-22, 1948 in the Community Building. Lawrence: World Co., 1948; AskArt, www.askart.com, accessed Dec. 21, 2005; Family Search. Version 2.5.0. Salt Lake City: Church of Jesus Christ of Latter Day Saints, 2002. www.FamilySearch.org accessed July 17, 2006.



### 303: BERNARD MARTIN Orig. Engraved Printers Plate & 2 Prints THOMAS HART BENTON Student

USD 25 - 75

An original engraved printing plate and two Wildlife prints of that plate by listed artist Bernard Martin. Martin was a student of Thomas Hart Benton at the KC Art Institute. Print Plate Dimensions:H: 6" x L: 14.75" x W: 1/8" Print Dimensions:H: 12.5" x L: 19" x W: 1/16" (flat)Artist Biography:Born Hiawatha, June 12, 1912; died Lake Lotawana, MO, July 7, 1998. Illustrator. Painter, specialized in birds. Was a pupil of Thomas Hart Benton at the Kansas City Art Institute. He illustrated juvenile stories written by his brother. Offset Lithography, Inc judged one of the books he illustrated, Rosy, Nose, (1946) one of the outstanding juvenile books of 1946.A resident of Lake Lotawana, MO, he specialized in paintings of meadowlarks, mallards, and other birds. His work appeared in many publications including The Kansas City Star, Turkey Call ( (cover image Ozark's Royalty, September/October 1987, and Wildlife Art News. His paintings raised thousands of dollars for the Missouri Ducks Unlimited chapter. In 1997, a muscle disease forced him to quit painting.SOURCES:Susan Craig, "Biographical Dictionary of Kansas Artists (active before 1945)"Sain, Lydia. Kansas Artists, compiled by Lydia Sain from 1932 to 1948. Typed Manuscript, 1948.; Festival of Kansas Arts and Crafts. Catalog: Arts and Crafts of Kansas: an Exhibition held in Lawrence, Feb. 18-22, 1948 in the Community Building. Lawrence: World Co., 1948; AskArt, www.askart.com, accessed Dec. 21, 2005; Family Search. Version 2.5.0. Salt Lake City: Church of Jesus Christ of Latter Day Saints, 2002. www.FamilySearch.org accessed July 17, 2006.

## FINE & DECORATIVE ARTS AND DESIGN AUCTION



### 304: BERNARD MARTIN Orig. Engraved Printers Plate & 9 Prints THOMAS HART BENTON Student

USD 25 - 75

An original engraved printing plate and nine Wildlife prints of that plate by listed artist Bernard Martin. Martin was a student of Thomas Hart Benton at the KC Art Institute. Prints are various sizes. Print Plate Dimensions: H: 6" x L: 15" x W: 1/8" Print Dimensions: Largest: H: 13" x L: 19" x W: 1/16" (flat) Smallest: H: 8.75" x L: 19" x W: 1/16" (flat) Artist Biography: Born Hiawatha, June 12, 1912; died Lake Lotawana, MO, July 7, 1998. Illustrator. Painter, specialized in birds. Was a pupil of Thomas Hart Benton at the Kansas City Art Institute. He illustrated juvenile stories written by his brother. Offset Lithography, Inc judged one of the books he illustrated, Rosy, Nose, (1946) one of the outstanding juvenile books of 1946. A resident of Lake Lotawana, MO, he specialized in paintings of meadowlarks, mallards, and other birds. His work appeared in many publications including The Kansas City Star, Turkey Call (cover image Ozark's Royalty, September/October 1987, and Wildlife Art News. His paintings raised thousands of dollars for the Missouri Ducks Unlimited chapter. In 1997, a muscle disease forced him to quit painting. SOURCES: Susan Craig, "Biographical Dictionary of Kansas Artists (active before 1945)" Sain, Lydia. Kansas Artists, compiled by Lydia Sain from 1932 to 1948. Typed Manuscript, 1948.; Festival of Kansas Arts and Crafts. Catalog: Arts and Crafts of Kansas: an Exhibition held in Lawrence, Feb. 18-22, 1948 in the Community Building. Lawrence: World Co., 1948; AskArt, www.askart.com, accessed Dec. 21, 2005; Family Search. Version 2.5.0. Salt Lake City: Church of Jesus Christ of Latter Day Saints, 2002. www.FamilySearch.org accessed July 17, 2006.



### 305: BERNARD MARTIN Orig. Engraved Printers Plate & 5 Prints THOMAS HART BENTON Student

USD 25 - 75

An original engraved printing plate and five Wildlife prints of that plate by listed artist Bernard Martin. Martin was a student of Thomas Hart Benton at the KC Art Institute. Print Plate Dimensions: H: 6" x L: 15" x W: 1/8" Print Dimensions: 4- H: 9" x L: 17.25" x W: 1/16" (flat) 1- H: 10" x L: 19" x W: 1/16" (Flat) Artist Biography: Born Hiawatha, June 12, 1912; died Lake Lotawana, MO, July 7, 1998. Illustrator. Painter, specialized in birds. Was a pupil of Thomas Hart Benton at the Kansas City Art Institute. He illustrated juvenile stories written by his brother. Offset Lithography, Inc judged one of the books he illustrated, Rosy, Nose, (1946) one of the outstanding juvenile books of 1946. A resident of Lake Lotawana, MO, he specialized in paintings of meadowlarks, mallards, and other birds. His work appeared in many publications including The Kansas City Star, Turkey Call (cover image Ozark's Royalty, September/October 1987, and Wildlife Art News. His paintings raised thousands of dollars for the Missouri Ducks Unlimited chapter. In 1997, a muscle disease forced him to quit painting. SOURCES: Susan Craig, "Biographical Dictionary of Kansas Artists (active before 1945)" Sain, Lydia. Kansas Artists, compiled by Lydia Sain from 1932 to 1948. Typed Manuscript, 1948.; Festival of Kansas Arts and Crafts. Catalog: Arts and Crafts of Kansas: an Exhibition held in Lawrence, Feb. 18-22, 1948 in the Community Building. Lawrence: World Co., 1948; AskArt, www.askart.com, accessed Dec. 21, 2005; Family Search. Version 2.5.0. Salt Lake City: Church of Jesus Christ of Latter Day Saints, 2002. www.FamilySearch.org accessed July 17, 2006.



### 306: BERNARD MARTIN 11 Wildlife Engraving Prints THOMAS HART BENTON Student

USD 25 - 75

Eleven wildlife prints by listed artist Bernard Martin. Martin was a student of Thomas Hart Benton at the KC Art Institute. Print Dimensions: H: 10" x L: 18" x W: 1/16" (flat) Artist Biography: Born Hiawatha, June 12, 1912; died Lake Lotawana, MO, July 7, 1998. Illustrator. Painter, specialized in birds. Was a pupil of Thomas Hart Benton at the Kansas City Art Institute. He illustrated juvenile stories written by his brother. Offset Lithography, Inc judged one of the books he illustrated, Rosy, Nose, (1946) one of the outstanding juvenile books of 1946. A resident of Lake Lotawana, MO, he specialized in paintings of meadowlarks, mallards, and other birds. His work appeared in many publications including The Kansas City Star, Turkey Call (cover image Ozark's Royalty, September/October 1987, and Wildlife Art News. His paintings raised thousands of dollars for the Missouri Ducks Unlimited chapter. In 1997, a muscle disease forced him to quit painting. SOURCES: Susan Craig, "Biographical Dictionary of Kansas Artists (active before 1945)" Sain, Lydia. Kansas Artists, compiled by Lydia Sain from 1932 to 1948. Typed Manuscript, 1948.; Festival of Kansas Arts and Crafts. Catalog: Arts and Crafts of Kansas: an Exhibition held in Lawrence, Feb. 18-22, 1948 in the Community Building. Lawrence: World Co., 1948; AskArt, www.askart.com, accessed Dec. 21, 2005; Family Search. Version 2.5.0. Salt Lake City: Church of Jesus Christ of Latter Day Saints, 2002. www.FamilySearch.org accessed July 17, 2006.



### 307: BERNARD MARTIN 3 Wildlife Engraved Prints THOMAS HART BENTON Student

USD 25 - 75

Three wildlife prints by listed artist Bernard Martin. Martin was a student of Thomas Hart Benton at the KC Art Institute. Print Dimensions: H: 10" x L: 19" x W: 1/16" (flat) Artist Biography: Born Hiawatha, June 12, 1912; died Lake Lotawana, MO, July 7, 1998. Illustrator. Painter, specialized in birds. Was a pupil of Thomas Hart Benton at the Kansas City Art Institute. He illustrated juvenile stories written by his brother. Offset Lithography, Inc judged one of the books he illustrated, Rosy, Nose, (1946) one of the outstanding juvenile books of 1946. A resident of Lake Lotawana, MO, he specialized in paintings of meadowlarks, mallards, and other birds. His work appeared in many publications including The Kansas City Star, Turkey Call (cover image Ozark's Royalty, September/October 1987, and Wildlife Art News. His paintings raised thousands of dollars for the Missouri Ducks Unlimited chapter. In 1997, a muscle disease forced him to quit painting. SOURCES: Susan Craig, "Biographical Dictionary of Kansas Artists (active before 1945)" Sain, Lydia. Kansas Artists, compiled by Lydia Sain from 1932 to 1948. Typed Manuscript, 1948.; Festival of Kansas Arts and Crafts. Catalog: Arts and Crafts of Kansas: an Exhibition held in Lawrence, Feb. 18-22, 1948 in the Community Building. Lawrence: World Co., 1948; AskArt, www.askart.com, accessed Dec. 21, 2005; Family Search. Version 2.5.0. Salt Lake City: Church of Jesus Christ of Latter Day Saints, 2002. www.FamilySearch.org accessed July 17, 2006.

## FINE & DECORATIVE ARTS AND DESIGN AUCTION



### 308: BERNARD MARTIN 4 Wildlife Engraved Prints THOMAS HART BENTON Student

USD 25 - 75

Four wildlife prints by listed artist Bernard Martin. Martin was a student of Thomas Hart Benton at the KC Art Institute. Print Dimensions:H: 12.5" x L: 19" x W: 1/16" (flat)Artist Biography:Born Hiawatha, June 12, 1912; died Lake Lotawana, MO, July 7, 1998. Illustrator. Painter, specialized in birds. Was a pupil of Thomas Hart Benton at the Kansas City Art Institute. He illustrated juvenile stories written by his brother. Offset Lithography, Inc judged one of the books he illustrated, Rosy, Nose, (1946) one of the outstanding juvenile books of 1946.A resident of Lake Lotawana, MO, he specialized in paintings of meadowlarks, mallards, and other birds. His work appeared in many publications including The Kansas City Star, Turkey Call ( (cover image Ozark's Royalty, September/October 1987, and Wildlife Art News. His paintings raised thousands of dollars for the Missouri Ducks Unlimited chapter. In 1997, a muscle disease forced him to quit painting.SOURCES:Susan Craig, "Biographical Dictionary of Kansas Artists (active before 1945)"Sain, Lydia. Kansas Artists, compiled by Lydia Sain from 1932 to 1948. Typed Manuscript, 1948.; Festival of Kansas Arts and Crafts. Catalog: Arts and Crafts of Kansas: an Exhibition held in Lawrence, Feb. 18-22, 1948 in the Community Building. Lawrence: World Co., 1948; AskArt, www.askart.com, accessed Dec. 21, 2005; Family Search. Version 2.5.0. Salt Lake City: Church of Jesus Christ of Latter Day Saints, 2002. www.FamilySearch.org accessed July 17, 2006.



### 309: BERNARD MARTIN 5 Wildlife Engraved Prints THOMAS HART BENTON Student

USD 25 - 75

Five wildlife prints by listed artist Bernard Martin. Martin was a student of Thomas Hart Benton at the KC Art Institute. Print Dimensions:H: 8.5" x L: 19" x W: 1/16" (flat)Artist Biography:Born Hiawatha, June 12, 1912; died Lake Lotawana, MO, July 7, 1998. Illustrator. Painter, specialized in birds. Was a pupil of Thomas Hart Benton at the Kansas City Art Institute. He illustrated juvenile stories written by his brother. Offset Lithography, Inc judged one of the books he illustrated, Rosy, Nose, (1946) one of the outstanding juvenile books of 1946.A resident of Lake Lotawana, MO, he specialized in paintings of meadowlarks, mallards, and other birds. His work appeared in many publications including The Kansas City Star, Turkey Call ( (cover image Ozark's Royalty, September/October 1987, and Wildlife Art News. His paintings raised thousands of dollars for the Missouri Ducks Unlimited chapter. In 1997, a muscle disease forced him to quit painting.SOURCES:Susan Craig, "Biographical Dictionary of Kansas Artists (active before 1945)"Sain, Lydia. Kansas Artists, compiled by Lydia Sain from 1932 to 1948. Typed Manuscript, 1948.; Festival of Kansas Arts and Crafts. Catalog: Arts and Crafts of Kansas: an Exhibition held in Lawrence, Feb. 18-22, 1948 in the Community Building. Lawrence: World Co., 1948; AskArt, www.askart.com, accessed Dec. 21, 2005; Family Search. Version 2.5.0. Salt Lake City: Church of Jesus Christ of Latter Day Saints, 2002. www.FamilySearch.org accessed July 17, 2006.



### 310: BERNARD MARTIN 7 Wildlife Engraved Prints THOMAS HART BENTON Student

USD 25 - 75

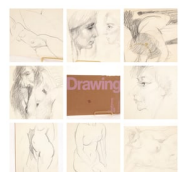
Seven wildlife prints by listed artist Bernard Martin. Martin was a student of Thomas Hart Benton at the KC Art Institute. Print Dimensions:H: 9.5" x L: 19" x W: 1/16" (flat)Artist Biography:Born Hiawatha, June 12, 1912; died Lake Lotawana, MO, July 7, 1998. Illustrator. Painter, specialized in birds. Was a pupil of Thomas Hart Benton at the Kansas City Art Institute. He illustrated juvenile stories written by his brother. Offset Lithography, Inc judged one of the books he illustrated, Rosy, Nose, (1946) one of the outstanding juvenile books of 1946.A resident of Lake Lotawana, MO, he specialized in paintings of meadowlarks, mallards, and other birds. His work appeared in many publications including The Kansas City Star, Turkey Call ( (cover image Ozark's Royalty, September/October 1987, and Wildlife Art News. His paintings raised thousands of dollars for the Missouri Ducks Unlimited chapter. In 1997, a muscle disease forced him to quit painting.SOURCES:Susan Craig, "Biographical Dictionary of Kansas Artists (active before 1945)"Sain, Lydia. Kansas Artists, compiled by Lydia Sain from 1932 to 1948. Typed Manuscript, 1948.; Festival of Kansas Arts and Crafts. Catalog: Arts and Crafts of Kansas: an Exhibition held in Lawrence, Feb. 18-22, 1948 in the Community Building. Lawrence: World Co., 1948; AskArt, www.askart.com, accessed Dec. 21, 2005; Family Search. Version 2.5.0. Salt Lake City: Church of Jesus Christ of Latter Day Saints, 2002. www.FamilySearch.org accessed July 17, 2006.



### 311: PHILOMENE BENNETT Watercolor Painting & Paper Pad

USD 25 - 75

A watercolor painting by listed artist Philomene Dosek Bennet. Includes her entire watercolor paper pad. Unsigned. Provenance: From the estate of Philomene Bennett and Lou Marak. Dimensions:H: 12" x L: 16" x W: 1/4" Artist Bio:See photos.



### 312: LOU MARAK Sketchbook Full of Original Drawings

USD 200 - 400

A sketchbook full of original drawings, cartoons and body studies by listed artist Louis Marak. Shown is a sampling of the drawings. The entire book is filled. Provenance: From the estate of Louis Marak and Philomene Dosek Bennett. Dimensions:H: 12" x 18.25" x .25" Artist Bio:See photos.

## FINE & DECORATIVE ARTS AND DESIGN AUCTION



### 313: PHILOMENE DOSEK BENNET Sketchbook Full of Drawings

USD 100 - 300

A sketchbook full of original drawings and studies in ink and pencil. Also includes notes and names and random thoughts. This is just a sampling of the contents. It is completely full. My favorite is Richard Prior on Fire. Provenance: From the estate of Philomene Bennet and Louis Marak. Dimensions:H: 8.5" x L: 11" x W: .5" Artist Bio:See photos.

---



### 314: LOU MARAK Sketchbook Full of Original Drawings

USD 200 - 400

A sketchbook full of original drawings, cartoons and body studies by listed artist Louis Marak. Shown is a sampling of the drawings. The entire book is filled. Provenance: From the estate of Louis Marak and Philomene Dosek Bennett. Dimensions:H: 11" x 9" x .5" Artist Bio:See photos.

---



### 315: LOUIS MARAK Sketchbook Full of Original Drawings

USD 200 - 400

A sketchbook full of original drawings, cartoons and body studies by listed artist Louis Marak. Shown is a sampling of the drawings. The entire book is filled. Provenance: From the estate of Louis Marak and Philomene Dosek Bennett. Dimensions:H: 9.5" x 12" x .5" Artist Bio:See photos.

---



### 316: Mid-Century Modern Tree Lamp w/ Fiberglass Shade

USD 100 - 200

A great vintage chalkware tree form lamp with original fiberglass shade. Dimensions;Lamp: H: 10.5" x L: 18.5" x W: 18.5" lamp w/ Shade: H: 28" Shade: H: 6" x 9"

---



### 317: LARGE Mid-Century Modern BRUTALIST Textured POTTERY LAMP

USD 100 - 200

A fantastic large Mid-Century Modern brutalist textured pottery lamp with original shade. Metal base. Dimensions:Lamp: H: 38" x L: 18" x W; 18" Shade: H: 15" x L: 18" x WL 18"

---



### 318: LOU MARAK Floating Fish Sticks Pottery Exhibition Poster

USD 25 - 75

An exhibition poster for Louis Marak's pottery exhibit entitled "Floating Fish Sticks" at Humboldt State University. Loose. Unframed. Provenance:From the estate of Louis Marak and Philomene Dosek Bennett. Artist Bio:See photos. Dimensions:H: 26.5" x L: 18" x W: 1/16" (flat)

---



### 319: BENNETT \* MARAK Painting Studio Art Exhibition Poster

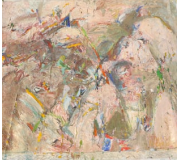
USD 25 - 75

An art exhibition poster from the Painting studio of Philomene Dosek Bennet and Louis Marak. Circa 1970's. Provenance: From the estate of Lou Marak and Philomene BennettDimensions:H: 22" x L: 17" x 1/16" (flat)

---



## FINE & DECORATIVE ARTS AND DESIGN AUCTION



### 320: PHILOMENE BENNETT "Spring Break" Oil/Canvas Abstract Painting 1970s

USD 100 - 300

A vintage Mid-Century Modern abstract painting by listed artist Philomene Dosek Bennett entitled "Spring Break". Oil/canvas with palette knife. Circa 1976. Unframed. Dimensions: 20" x 24" x 1/8" Provenance: From the estate of Philomene Dosek Bennet and Lou Marak.

---



### 321: BEN SEIBEL INFORMAL IROQUOIS Harvest Time 52 pc Serveware Dish Set Mid-Century Modern

USD 50 - 100

A Mid-Century Modern set (52 pcs) of serveware/ china dishes designed by Ben Seibel: "Informal Iroquois; Harvest Time". Includes: 2 covered sugar dishes, 5 salad plates, 4 dessert plates, 2 large oval serving platters, 2 covered round serving bowls, 3 large open serving bowls, 2 small open serving bowls, 1 covered butter dish, 1 creamer pitcher, 13 coffee cups, 8 saucers, 3 soup bowls - pattern worn on these, 6 dinner plates - pattern worn on these. No chips, cracks or repairs.

---



### 322: ASIAN CARVED WOOD FRAME/SHELF w/ Dried Flower Display

USD 25 - 75

An Asian hanging carved wooden frame/ shelf with dried flowers display. Traces of original polychrome paint. Dimensions: H: 16" x L: 24" x W: 2.5"

---



### 323: HUGE NATIVE AMERICAN Terra Cotta SCULPTURE of WOMAN

USD 25 - 75

A very large terra cotta sculpture of a Native American woman. This could be for indoor / outdoor decor. Unsigned. Dimensions: H: 28" x L: 20" x W: 14"

---



### 324: RAY HALLER Orig. Disney Artist Mickey Mouse Cartoon Drawing PROVENANCE

USD 50 - 100

An ink on cardboard box drawing of Mickey Mouse by Disney artist, author and merchandise host Ray Haller. Addressed to a friend with artist's return address. Dimensions: H: 4.5" x L: 6.25" x W: 4.25" Provenance: Jill English collection, United States. History: Ray Haller had joined a dance competition at Disneyland in the 1980s. When his original partner became ill and could not participate, Ms. English volunteered to take her place. This sparked a life-long friendship between the two and Ray Haller consequently sent many original Disney works of art to her on a regular basis.

---



### 325: RAY HALLER Original Disney Artist Mickey Mouse Drawing PROVENANCE

USD 25 - 75

An ink on cardboard box drawing of Mickey Mouse by Disney artist, author and merchandise host Ray Haller. Addressed to a friend with artist's return address. Dimensions: H: 4.5" x L: 8" x W: 1.5" Provenance: Jill English collection, United States. History: Ray Haller had joined a dance competition at Disneyland in the 1980s. When his original partner became ill and could not participate, Ms. English volunteered to take her place. This sparked a life-long friendship between the two and Ray Haller consequently sent many original Disney works of art to her on a regular basis.

---



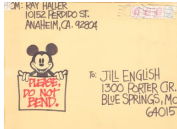
### 326: RAY HALLER Original Disney Artist Mickey Mouse Cartoon Drawing PROVENANCE

USD 50 - 100

An ink on cardboard drawing of Mickey Mouse by Disney artist, author and merchandise host Ray Haller. Addressed to a friend with artist's return address. Dimensions: H: 18" x L: 18.5" x W: 2.5" Provenance: Jill English collection, United States. History: Ray Haller had joined a dance competition at Disneyland in the 1980s. When his original partner became ill and could not participate, Ms. English volunteered to take her place. This sparked a life-long friendship between the two and Ray Haller consequently sent many original Disney works of art to her on a regular basis.

---

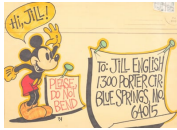
## FINE & DECORATIVE ARTS AND DESIGN AUCTION



### 327: RAY HALLER Original DISNEY Cartoon Art Mickey & Pluto Drawing PROVENANCE

USD 50 - 100

An ink on manilla envelope drawing of Mickey Mouse and Pluto by Disney artist, author and merchandise host Ray Haller. Double-sided with artwork on recto and verso. Addressed to a friend with artist's return address. Dimensions:H: 14.5" x L: 12" x W: 1/16th (flat)Provenance: Jill English collection, United States. History: Ray Haller had joined a dance competition at Disneyland in the 1980s. When his original partner became ill and could not participate, Ms. English volunteered to take her place. This sparked a life-long friendship between the two and Ray Haller consequently sent many original Disney works of art to her on a regular basis.



### 328: RAY HALLER Original Disney Cartoon Drawing PROVENANCE

USD 50 - 100

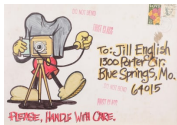
An ink on manilla envelope drawing of Mickey Mouse by Disney artist, author and merchandise host Ray Haller. Double-sided with artwork on recto and verso. Addressed to a friend with artist's return address. Dimensions:H: 11.5" x L: 14.5" x W: 1/16th (flat)Provenance: Jill English collection, United States. History: Ray Haller had joined a dance competition at Disneyland in the 1980s. When his original partner became ill and could not participate, Ms. English volunteered to take her place. This sparked a life-long friendship between the two and Ray Haller consequently sent many original Disney works of art to her on a regular basis.



### 329: RAY HALLER Original Disney Cartoon Drawing Donald Duck PROVENANCE

USD 50 - 100

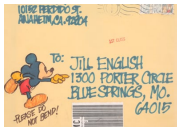
An ink on artist board drawing of Donald Duck in an Easter Bunny costume by Disney artist, author and merchandise host Ray Haller. Initialed Lower recto. Inscribed to a friend. Dimensions:H: 15" x L: 12" x W: 1/8th (flat)Provenance: Jill English collection, United States. History: Ray Haller had joined a dance competition at Disneyland in the 1980s. When his original partner became ill and could not participate, Ms. English volunteered to take her place. This sparked a life-long friendship between the two and Ray Haller consequently sent many original Disney works of art to her on a regular basis.



### 330: RAY HALLER Original Disney Artist Mickey Mouse Cartoon Drawing PROVENANCE

USD 50 - 100

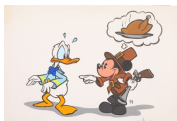
An ink on white cardboard envelope drawing of Mickey Mouse by Disney artist, author and merchandise host Ray Haller. Double-sided with artwork on recto and verso. Addressed to a friend with artist's return address. Dimensions:H: 9" x L: 15" x W: 1/16th (flat)Provenance: Jill English collection, United States. History: Ray Haller had joined a dance competition at Disneyland in the 1980s. When his original partner became ill and could not participate, Ms. English volunteered to take her place. This sparked a life-long friendship between the two and Ray Haller consequently sent many original Disney works of art to her on a regular basis.



### 331: RAY HALLER Original Disney Cartoon Drawing Mickey & Donald PROVENANCE

USD 50 - 100

An ink on manilla envelope drawing of Mickey Mouse and Donald Duck by Disney artist, author and merchandise host Ray Haller. Double-sided with artwork on recto and verso. Addressed to a friend with artist's return address. Dimensions:H: 14.5" x L: 11.5" x W: 1/16th (flat)Provenance: Jill English collection, United States. History: Ray Haller had joined a dance competition at Disneyland in the 1980s. When his original partner became ill and could not participate, Ms. English volunteered to take her place. This sparked a life-long friendship between the two and Ray Haller consequently sent many original Disney works of art to her on a regular basis.



### 332: RAY HALLER Original Disney Cartoon Art Drawing Mickey & Donald PROVENANCE

USD 50 - 100

An ink on illustration board drawing of Mickey Mouse and Donald Duck by Disney artist, author and merchandise host Ray Haller. Initialed lower recto and inscribed to a friend. Dimensions:H: 12" x L: 16" x W: 1/8th (flat)Provenance: Jill English collection, United States. History: Ray Haller had joined a dance competition at Disneyland in the 1980s. When his original partner became ill and could not participate, Ms. English volunteered to take her place. This sparked a life-long friendship between the two and Ray Haller consequently sent many original Disney works of art to her on a regular basis.

## FINE & DECORATIVE ARTS AND DESIGN AUCTION



**333: LARGE Contemporary Painting ST. LOUIS ARTIST #1**

USD 100 - 200

A large Contemporary acrylic on canvas painting. Framed with plastic rococo frame. Initialed on verso. St. Louis artist. 2018. Framed size dimensions: H: 59" x L: 25" x W: 3"

---



**334: LARGE Contemporary Acrylic/Canvas PAINTING St. Louis #2**

USD 100 - 200

A large Contemporary acrylic on canvas painting. Nicely framed with gilt wood frame. St. Louis artist. Framed Dimensions: H: 56.6" x L: 32.5" x W: 3"

---



**335: JUDITH BURNGEN Art Photograph "Encendedor Reparacion" Old Havana**

USD 25 - 75

A photograph of a lighter repairman in Old Havana, Cuba by artist Judith Burngen. "Encendedor Reparacion" titled, and signed lower recto with artist gallery label and info on verso. Nicely framed under glass. Dimensions: H: 20.5" x L: 16.25" x W: 1"

---



**336: JUDITH BURNGEN Photograph "Cosina de la Marina" Old Havana, Cuba**

USD 25 - 75

A photograph of the marina kitchen in Old Havana, Cuba by artist Judith Burngen. "Cosina de la Marina" titled, and signed lower recto with artist gallery label and info on verso. Nicely framed under glass. Dimensions: H: 20.5" x L: 16.25" x W: 1"

---



**337: JUDITH BURNGEN Photograph "Joven Beisbolista" Havana, Cuba**

USD 25 - 75

A photograph of a Young Slugger in Havana, Cuba by artist Judith Burngen. "Joven Beisbolista" titled, and signed lower recto with artist gallery label and info on verso. Nicely framed under glass. Dimensions: H: 20.5" x L: 16.25" x W: 1"

---



**338: Mid-Century Modern BRUTALIST METAL WALL SCULPTURE Curtis Jere Style**

USD 50 - 100

A MCM brutalist mixed metals wall sculpture of a bridge and city. In the manner of Curtis Jere. Dimensions: H: 37" x L: 60" x D: 4"

---



**339: PAUL McCOBB for PLANNER GROUP END TABLE W/ Drawer Mid-Century Modern**

USD 200 - 400

A nice Mid-Century Modern end table with single drawer by designer Paul McCobb for Planner Group in blonde wood. Dimensions: H: 24" x L: 22" x D: 17"

---



**340: CHARLES EAMES Style PLYCRAFT Lounge Chair & Ottoman Mid-Century Modern**

USD 300 - 500

A Mid-Century Modern Charles Eames style lounge chair and ottoman made by Plycraft. Bent wood and grey suede fabric. Chrome base. Dimensions: Chair: H: 34" x L: 31" x D: 32" Ottoman: H: 17" x L: 25" x D: 21.5"

---



## FINE & DECORATIVE ARTS AND DESIGN AUCTION



**341: EKORNES STRESSLESS Lounge Chair & Ottoman Black Leather Norway**

USD 300 - 500

An Ekornes Stressless lounge chair and matching ottoman with black leather covering. Made in Norway. Dimensions:Chair: H: 41" x L: 34" x D: 30" Ottoman:H: 15" x L: 22" x D: 15"



**342: ROBERT SONNEMAN Mid-Century Modern White Ball Floor Lamp**

USD 100 - 300

A vintage 1960's white ball floor lamp designed by Robert Sonneman. Adjustable head. Works great. Dimensions:H: 56" x L: 15" x D: 11"



**343: THE BLACK BULL English Tavern LARGE Hanging Lighted Sign**

USD 300 - 500

A large vintage/antique hanging lighted sign from the Black Bull Tavern in England. The sign itself is much older than the plexiglass Tetley Tea inserts. Constructed of wood, metal, and plexiglass. Plugs in to light up. Untested. Dimensions:H: 40" x L: 26" x D: 14"



**344: ERIC BEAUCHAMP Lucite Rolling Vanity Bench One Stop Plastic Shop**

USD 100 - 300

A lucite rolling vanity bench with leather seat from One Stop Plastic Shop. Designed and fabricated by artist Eric Beauchamp. Dimensions:H: 19 x L: 19" x W: 16" Artist Bio:Eric Beauchamp got into the plastic fabrication business over 20 years ago. He learned the business inside and out, and is passionate about creating quality acrylic products.He is focusing primarily on acrylic furniture and other acrylic products, hence the name One Stop Plastic Shop. This allows him to broaden his customer base and show his creative side. Acrylic is his medium of choice, and he manufactures a wide variety of items for businesses and consumers.The benefit of Eric being a small business owner, and "not one of the big guys" is it allows him to forge personal relationships with his customers. His shop is currently located in Naples Florida. My products have appeared in: Architectural Digest<http://www.architecturaldigest.com/gallery/take-a-look-inside-jessica-harts-apartment/all> Whitney Museum of American Art<http://whitney.org/Exhibitions/OpenPlanSteveMcQueen>



**345: ROYAL HAEGER Mid-Century Modern Textured Pottery Pitcher**

USD 20 - 40

A Mid-Century Modern tall textured white pottery pitcher with aqua interior glaze. Made by Royal Haeger. Felted base. Dimensions:H; 19" x L: 9" x W: 9"



**346: RAY HALLERY Original Disney Cartoon Drawing PROVENANCE**

USD 50 - 100

An ink on artist board drawing of Mickey Mouse and Huey and Dewey Ducks by Disney artist, author and merchandise host Ray Haller. Initialed Lower recto. Inscribed to a friend and signed. Dimensions:H: 12" x L: 9" x W: 1/8th (flat)Provenance: Jill English collection, United States. History: Ray Haller had joined a dance competition at Disneyland in the 1980s. When his original partner became ill and could not participate, Ms. English volunteered to take her place. This sparked a life-long friendship between the two and Ray Haller consequently sent many original Disney works of art to her on a regular basis.



**347: RAY HALLER Original Disney Cartoon Art Drawing PROVENANCE**

USD 50 - 100

An ink on manilla envelope drawing of Mickey Mouse by Disney artist, author and merchandise host Ray Haller. Addressed to a friend with artist's return address upper left recto. Dimensions:H: 11.5" x L: 14.5" x W: 1/16th (flat)Provenance: Jill English collection, United States. History: Ray Haller had joined a dance competition at Disneyland in the 1980s. When his original partner became ill and could not participate, Ms. English volunteered to take her place. This sparked a life-long friendship between the two and Ray Haller consequently sent many original Disney works of art to her on a regular basis.

## FINE & DECORATIVE ARTS AND DESIGN AUCTION



### 348: RAY HALLER Original Disney Artist Cartoon Drawing PROVENANCE

USD 50 - 100

An ink on cardboard drawing of Mickey Mouse by Disney artist, author and merchandise host Ray Haller. Addressed to a friend with artist's return address. Dimensions:H: 15" x L: 18" x W: 1/8th (flat)Provenance: Jill English collection, United States. History: Ray Haller had joined a dance competition at Disneyland in the 1980s. When his original partner became ill and could not participate, Ms. English volunteered to take her place. This sparked a life-long friendship between the two and Ray Haller consequently sent many original Disney works of art to her on a regular basis.

---



### 349: RAY HALLER Original Disney Artist Cartoon Drawing PROVENANCE

USD 50 - 100

An ink on cardboard drawing of Mickey Mouse by Disney artist, author and merchandise host Ray Haller. Addressed to a friend with artist's return address. Dimensions:H: 15" x L: 18" x W: 1/8th (flat)Provenance: Jill English collection, United States. History: Ray Haller had joined a dance competition at Disneyland in the 1980s. When his original partner became ill and could not participate, Ms. English volunteered to take her place. This sparked a life-long friendship between the two and Ray Haller consequently sent many original Disney works of art to her on a regular basis.

---



### 350: RAY HALLER Original Disney Cartoon Art Drawing PROVENANCE

USD 50 - 100

An ink on cardboard drawing of Mickey Mouse by Disney artist, author and merchandise host Ray Haller. Addressed to a friend with artist's return address. Dimensions:H: 15" x L: 18" x W: 1/8th (flat)Provenance: Jill English collection, United States. History: Ray Haller had joined a dance competition at Disneyland in the 1980s. When his original partner became ill and could not participate, Ms. English volunteered to take her place. This sparked a life-long friendship between the two and Ray Haller consequently sent many original Disney works of art to her on a regular basis.

---



### 351: RAY HALLER Original Disney Art Cartoon Mickey Mouse PROVENANCE

USD 50 - 100

An ink on cardboard drawing of Mickey Mouse by Disney artist, author and merchandise host Ray Haller. Addressed to a friend with artist's return address. Dimensions:H: 15" x L: 18" x W: 1/8th (flat)Provenance: Jill English collection, United States. History: Ray Haller had joined a dance competition at Disneyland in the 1980s. When his original partner became ill and could not participate, Ms. English volunteered to take her place. This sparked a life-long friendship between the two and Ray Haller consequently sent many original Disney works of art to her on a regular basis.

---



### 352: RAY HALLER Original Disney Cartoon Art Drawing Minnie Mouse PROVENANCE

USD 50 - 100

An ink on cardboard drawing of Minnie Mouse by Disney artist, author and merchandise host Ray Haller. Addressed to a friend with artist's return address. Dimensions:H: 15" x L: 18" x W: 1/8th (flat)Provenance: Jill English collection, United States. History: Ray Haller had joined a dance competition at Disneyland in the 1980s. When his original partner became ill and could not participate, Ms. English volunteered to take her place. This sparked a life-long friendship between the two and Ray Haller consequently sent many original Disney works of art to her on a regular basis.

---



### 353: RAY HALLER Original Disney Cartoon Art Drawing PROVENANCE

USD 50 - 100

An ink on cardboard drawing of Mickey Mouse's fingers by Disney artist, author and merchandise host Ray Haller. Addressed to a friend with artist's return address. Dimensions:H: 15" x L: 18" x W: 1/8th (flat)Provenance: Jill English collection, United States. History: Ray Haller had joined a dance competition at Disneyland in the 1980s. When his original partner became ill and could not participate, Ms. English volunteered to take her place. This sparked a life-long friendship between the two and Ray Haller consequently sent many original Disney works of art to her on a regular basis.

---

## FINE & DECORATIVE ARTS AND DESIGN AUCTION



### 354: RAY HALLER Original Cartoon Art Drawing Mickey Mouse PROVENANCE

USD 50 - 100

An ink on cardboard drawing of Mickey Mouse by Disney artist, author and merchandise host Ray Haller. Double-sided; artwork on recto and verso. Addressed to a friend with artist's return address. Dimensions:H: 18.75" x L: 20.75" x W: 1/8th (flat)Provenance: Jill English collection, United States. History: Ray Haller had joined a dance competition at Disneyland in the 1980s. When his original partner became ill and could not participate, Ms. English volunteered to take her place. This sparked a life-long friendship between the two and Ray Haller consequently sent many original Disney works of art to her on a regular basis.



### 355: RAY HALLER Original DISNEY Cartoon Art Mickey Mouse PROVENANCE

USD 50 - 100

An ink on cardboard drawing of Mickey Mouse by Disney artist, author and merchandise host Ray Haller. Double-sided with artwork on recto and verso. Addressed to a friend with artist's return address. Dimensions:H: 20.5" x L: 24" x W: 1/8th (flat)Provenance: Jill English collection, United States. History: Ray Haller had joined a dance competition at Disneyland in the 1980s. When his original partner became ill and could not participate, Ms. English volunteered to take her place. This sparked a life-long friendship between the two and Ray Haller consequently sent many original Disney works of art to her on a regular basis.



### 356: RAY HALLER Original DISNEY Art Cartoon Drawing PROVENANCE

USD 50 - 100

An ink on cardboard drawing of Mickey Mouse by Disney artist, author and merchandise host Ray Haller. Addressed to a friend with artist's return address. Dimensions:H: 20.5" x L: 24" x W: 1/8th (flat)Provenance: Jill English collection, United States. History: Ray Haller had joined a dance competition at Disneyland in the 1980s. When his original partner became ill and could not participate, Ms. English volunteered to take her place. This sparked a life-long friendship between the two and Ray Haller consequently sent many original Disney works of art to her on a regular basis.



### 357: RAY HALLER Disney Artist Original Drawing PROVENANCE

USD 25 - 50

An ink on cardboard drawing by Disney artist, author and merchandise host Ray Haller. Addressed to a friend with artist's return address. Initialed LRR. Dimensions:H: 20.5" x L: 24" x W: 1/8th (flat)Provenance: Jill English collection, United States. History: Ray Haller had joined a dance competition at Disneyland in the 1980s. When his original partner became ill and could not participate, Ms. English volunteered to take her place. This sparked a life-long friendship between the two and Ray Haller consequently sent many original Disney works of art to her on a regular basis.



### 358: WEDGWOOD Jasperware Neoclassical FOOTED URN Antique

USD 300 - 500

An antique Wedgwood jasperware Neoclassical footed urn. Marked on base: WEDGWOOD FRT 298 WED #85. See condition report. Dimensions:H: 14" x L: 11" x W: 11"



### 359: BLUE WILLOW 54 pcs Partial Dinner Service Dishes

USD 50 - 100

A 54 piece group of Blue Willow pattern dishes. Some are older than others. Made by a variety of companies. Includes: -1 Large Platter(plate hanger on verso)-1 Clock (Churchill)-1 oval vegetable dish (chip on rim)-1 teapot with lid-1 creamer with lid-1 sugar dish with lid-1 small saucer pitcher-11 dinner plates (Churchill)-16 cereal/cream soup bowls (Churchill)-1 saucer (unmarked)-1 saucer (churchill)-1 saucer (Churchill)-3 salad plates (churchill)-7 wide broth soup bowls (Churchill)-2 salad plates (unmarked)-2 berry bowls (Japan)-4 berry bowls (unmarked)

## FINE & DECORATIVE ARTS AND DESIGN AUCTION



### 360: STAINED GLASS Lamp Peacock Shade

USD 25 - 50

A modern stained glass lamp with peacock shade. The shade/bowl is removable from the stand/light and can be turned convex or concave, as desired. Dimensions: Shade: H: 3.5" x L: 14" x W: 14" Lamp/Stand: H: 8.5" x L: 8" x W: 6.25"

---



### 361: GROUP ASIAN DECOR Japanese Vase & 3 Chinese Glass Balls on Stands

USD 20 - 40

A group of Asian decor. A Japanese vase and three Chinese glass balls on wooden stands. (The balls are not attached to the stands). Dimensions: Vase: H: 5.5" x L: 5.5" x W: 5.5" Large Glass Ball: H: 7.5" x L: 6" x W: 6" Medium: H: 6.75" x L: 5" x W: 5" Small: H: 3.5" x L: 2.5" x W: 2.5"

---



### 362: Contemporary GLASS PLATE & 8 WATER GOBLETS

USD 20 - 40

A group of Contemporary glass items: Fused glass floral plate and 8 hand-made glass water/wine goblets. Dimensions: Plate: H: .5" x L: 11" x W: 11" Glasses (each): H: 6.5" x L: 4" x W: 4"

---



### 363: Group MERMAID Decor & Lamp

USD 20 - 40

A group of Mermaid decor and lighted Mermaid lamp. Lamp works. Lamp Dimensions: H: 14" x L: 6" x W: 5"

---



### 364: WILTON ARMETALE Decorative Aluminum Tray

USD 20 - 40

A decorative aluminum tray made by Wilton Armetale. Retains original label on verso. Dimensions: H: 19" x L: 16" x W: 2"

---



### 365: KENT HAMMERSTOM "Bambi's Window" Official Disney Lithograph

USD 25 - 75

An official Disney lithograph print entitled "Bambi's Window" by Disney artist Kent Hammerstom. Includes paperwork on verso. Nicely framed under glass. Dimensions: H: 20" x L: 16" x W: 1"

---



### 366: GAME ROOM CARPET by Smart Carpets LTD 12' x 9'

USD 25 - 50

A carpet with game boards on it by Smart Carpets LTD. Dimensions: H: 12 ft x L: 9 ft x W: 1/8"

---



### 367: ARCHED STAINED GLASS WINDOW ANTIQUE ARCHITECTURAL SALVAGE

USD 300 - 500

An antique arched stained glass window. There are two small hooks on top to hang it. No broken glass panes noted. Rustic original white paint to one side and brown paint to the verso. Dimensions: H: 32" x L: 35" x W: 1.5"

---

## FINE & DECORATIVE ARTS AND DESIGN AUCTION



**368: ARTS & CRAFTS STAINED GLASS WINDOW Architectural Salvage**

USD 300 - 500

An Arts & Crafts stained glass window with colored slag glass. The wooden frame is painted brown on the interior side with two pull open handles and white on the exterior side. Dimensions: H: 34.5" x L: 32" x W: 2.25"

---



**369: JAPANESE LACQUER ROOM SCREEN Palace Scene 8 ft x 12 ft**

USD 100 - 300

A gorgeous large Japanese lacquer room screen divider. Black lacquer over wood with incised gilt palace scene on one side and colored mountain and bamboo scene on verso. 8 panels. Dimensions: Each panel measures: H: 94" x L: 18" x W: 1" Total Dimensions: H: 94" (7 ft 8 in.) x L: 144" (12 ft) x W: 1"

---



**370: STAINED GLASS TRANSOM WINDOW W/ OPENING LEVER**

USD 200 - 400

An antique stained glass transom window. There are three panels in the wooden frame with a metal lever that opens and shuts the middle panel. Natural wood on both sides. Traces of white paint on one side. Dimensions: H: 22.25" x L: 58" x W: 2.75"

---



**371: ARTS & CRAFTS STAINED GLASS WINDOW English Uni Pharmacy**

USD 200 - 400

A vintage/antique stained glass window from an English University. The lower panel reads "Presented by Class DDD" (Drug Discovery and Development (Pharmaceutical Studies)). This window was imported from England. Lovely slag glass in wooden window frame. Dimensions: H: 36" x L: 28" x W: 2"

---



**372: ARTS & CRAFTS STAINED GLASS WINDOW Architectural Salvage**

USD 100 - 300

A great Arts & Crafts stained glass window set in a hinged wooden window frame. One side has white paint and the other has light green. See condition report. Dimensions: H: 34.5" x L: 18.5" x W: 1"

---



**373: LEHIGH-LEOPOLD EXECUTIVE DESK L-Shaped Mid-Century Modern**

USD 500 - 1,000

A fantastic Mid-Century Modern L-shaped executive desk made by Lehigh-Leopold. This desk has two pieces: the filing cabinet credenza with drawers, filing cabinet drawers, and sliding door cabinet storage; and the desk portion with two drawers and a pull out writing desk drawer. I believe this is Rosewood with chrome feet. Dimensions: Part I: H: 26" x L: 76" x W: 17" Part II: H: 30" x L: 78" x W: 33"

---



**374: MENGEL Mid-Century Modern VANITY DRESSER Blonde Wood 1950s**

USD 100 - 300

A vintage 1950's vanity/dresser in blonde wood made by Mengel furniture. Marked inside top left drawer and original label on back of dresser. Dimensions: H: 33.5" x L: 55.25" x D: 19"

---



## FINE & DECORATIVE ARTS AND DESIGN AUCTION



**375: KENT COFFEY Foreteller Mid-Century Modern Dresser Chest of Drawers**

USD 100 - 300

A vintage Mid-Century Modern chest of drawers by Kent Coffey in the Foreteller line. Wood is "Tawny Walnut". Marked on inside of top drawer. Dimensions:H: 44.75" x W: 42" x D: 19.5"

---



**376: LEHIGH-LEOPOLD Mid-Century Modern Locking Filing Cabinet Desk**

USD 200 - 400

A fabulous Mid-Century Modern filing cabinet/desk with locking drawers and keys. Comes with extra hardware and dividers so you can customize the partitions to fit your needs. I believe this is Rosewood with chrome feet. Dimensions:H; 29" x L: 56" x D: 17"

---



**377: LANE BRUTALIST Mid-Century Modern Padded Headboard w/ Lights**

USD 200 - 400

A rare brutalist headboard in geometric form made by Lane Furniture. This piece is oak with padded center and built in round orbiter lights. Marked on back: 511-28 with serial number. Dimensions:H: 49.5" x L: 80" x W: 8" I believe this fits a queen sized bed. Please check the dimensions.

---



**378: 2X LANE BRUTALIST Geometric Form Night Stands Mid-Century Modern**

USD 100 - 200

A pair of Mid-Century Modern brutalist geometric form oak night stands made by Lane Furniture. Dimensions: (each)H: 23" x L: 28" x D: 16"

---



**379: LANE BRUTALIST Geometric Form Vanity Dresser w/ Mirror Mid-Century Modern**

USD 100 - 300

A fantastic Mid-Century Modern brutalist geometric form oak vanity with removable and adjustable mirror. Dimensions:Mirror only: H: 57.5" x L: 50" x W: 2.5" Vanity only: H: 30" x L: 78" x W: 17.5"

---



**380: LANE BRUTALIST Geometric Form Armoire/Entertainment Cabinet Mid-Century Modern**

USD 100 - 300

A great Mid-Century Modern brutalist geometric form oak armoire/entertainment cabinet made by Lane. The shelves in the upper portion are removable so you can use it as an entertainment center or put the shelves back in for use as a dresser/ armoire. Multi-functional piece. Dimensions:H: 65" x L: 40" x W: 18"

---



**381: RICHARDSON Mid-Century Modern Octagonal Dining Table w/ 2 Leaves**

USD 100 - 300

A great Mid-Century Modern campaign style walnut octagonal dining table made by Richardson. The entire table (including the base) opens up and extends to create an elongated dining table. Includes 2 extension leaves. Dimensions:Octagonal (closed): H: 29.25" x L: 42" x W: 42" Elongated (opened): H: 29.25" x L: 66" x W: 42" Each leaf: H: 1" x L: 12" x W: 42"

---

## FINE & DECORATIVE ARTS AND DESIGN AUCTION



### 382: Mid-Century Modern WROUGHT IRON PATIO TABLE & CHAIRS

USD 100 - 300

A fun kitschy Mid-Century Modern white wrought iron patio set. The table has a glass top and the chairs have original yellow cushions. The cushions are soft and pliable and in very good condition. Dimensions: Table: H: 29.5" x L: 32" x W: 32" Chairs (each); H: 33" x L: 18" x D: 20"

---



### 383: PAIR EGYPTIAN REVIVAL LACQUERED PARCEL GILT THRONE CHAIRS

USD 600 - 1,200

A fine pair of Egyptian Revival lacquered parcel gilt throne chairs. An unusual blend of Chinese and Egyptian iconography would describe these unique chairs. They are well-built pieces by a master craftsman. Dimensions:(Each)H: 39.25" x L: 28" x W: 24"

---



### 384: ART NOUVEAU STAINED GLASS WINDOW BOX TRANSOM 3-Sided

USD 500 - 1,000

A gorgeous Art Nouveau stained glass box transom. Three-sided window with arched central pane. Gorgeous curvilinear flowers create an elegant glow when backlit. This is a large piece that has been imported from England. There are hooks on the top if you would like to hang the piece. Dimensions:H: 23.25" x L: 90" x D: 23"

---



### 385: VICTORIAN STAINED GLASS WINDOW BURLLED WOOD DOOR

USD 400 - 800

A gorgeous Victorian stained glass window inside a full wooden door. The door has three-dimensional wood designs and inset burlled wood panels. This door was imported from England. Dimensions:H: 80" x L: 29.25" x D: 4"

---



### 386: BRITANNIA INN Art Nouveau Stained Glass Window ENGLISH TAVERN

USD 600 - 1,200

An antique Art Nouveau Stained Glass and etched glass window with arched transom in solid wooden wall/frame. This is from the Britannia Inn and Tavern. It was imported from England. The arched transom has lovely curvilinear flowers and the words "Britannia" and "Inn" is etched on either side of the primary window panes. There are also some flourishes above the lettering. Dimensions:H: 80" x L: 29.25" x D: 4"

---



### 387: THE BLACK BULL BAR Victorian Etched Glass English Pub Door

USD 600 - 1,200

An antique Victorian English pub door with etched glass window. Imported from England. From The Black Bull Bar. The etching has a great bull on the window as well as the pub name lettering and exquisite flourishes and details. This is the full door with metal kickplate at the bottom. Dimensions:H: 83.5" x L: 36" x D: 2"

---



### 388: THE BLACK BULL JUG BAR English Pub Victorian Etched Glass Window Door

USD 600 - 1,200

An antique Victorian English pub door with etched glass window. Imported from England. From The Black Bull Jug Bar. The etching has a great bull on the window as well as the pub name lettering and exquisite flourishes and details. This is the full door with metal kickplate at the bottom. Dimensions:H: 83" x L: 35.5" x D: 2"

---



## FINE & DECORATIVE ARTS AND DESIGN AUCTION



**389: 6 ft x 4 ft Victorian BEVELED MIRROR From ENGLISH PUB In Large Wood Frame**

USD 300 - 500

An antique Victorian beveled mirror set in a huge wooden wall/framed. This was imported from English and is from a Victorian English Pub. Great craquelure to the surface of the lacquer. Dimensions:H: 69" x L: 50.5" x D: 2" Approximately 6 foot by 4 foot.

---



**390: THE BLACK BULL BAR English Pub Etched Glass Windows Victorian**

USD 300 - 500

A Victorian etched glass window (2 pane section) from The Black Bull Bar. This was imported from England. There are two central panel with etched bulls and an arched transom panel on the top with thistle and exquisite flourishes. Dimensions:H: 22" x L: 39" x D: 4.75" (at widest)

---



**391: THE BLACK BULL BAR Victorian English Pub Etched Glass Windows**

USD 100 - 500

A Victorian etched glass window (4 pane section) from The Black Bull Bar. This was imported from England. There are four central panels with etched bulls and two arched transom panels on the top with thistles and exquisite flourishes. Dimensions:H: 22" x L: 58" x D: 4.75" (at widest)

---



**392: SILK PERSIAN CARPET AREA RUG 112" X 80"**

USD 100 - 200

A large silk hand-knotted Persian carpet area rug. Lovely colors in reds and blues. Fringe on ends. Dimensions:H: 112" x L: 80" x W: 1/8"

---



**393: EMIL REISMAN Modernist Pottery Sculpture**

USD 25 - 75

A whimsical modernist pottery sculpture by California artist Emil Reisman. Dimensions:H: 11" x L: 7" x W: 4.5"

---



**394: SASCHA BRASTOFF Mid-Century Modern Painted Horse Ceramic Ashtray**

USD 25 - 50

A Mid-Century Modern painted horse ceramic ashtray by artist Sascha Brastoff. Marked on base. Dimensions:H: 1.5" x L: 8.5" x W: 6"

---



**395: Studio Art Pottery Modern NUDE WOMAN SCULPTURE**

USD 25 - 75

A studio art pottery seated nude woman sculpture. Initialed ST or SJ and dated '96. Dimensions:H: 13" x L: 13" x W: 10"

---

## FINE & DECORATIVE ARTS AND DESIGN AUCTION



**396: Chinese FAMILIAL PORTRAIT On Silk Q'ING Dynasty MALE**

USD 50 - 100

A fine 19th century Chinese familial portrait of a male. Oil on silk. Nicely framed. Dimensions: H: 32.5" x L: 25.5" x W: .5"

---



**397: Chinese FAMILIAL PORTRAIT Painting On Silk Q'ING Dynasty FEMALE**

USD 50 - 100

A fine 19th century Chinese familial portrait of a female. Oil on silk. Nicely framed. Dimensions: H: 32.5" x L: 25.5" x W: .5"

---



**398: BEN MACALA (South African 1938-1997) Pastel Drawing**

USD 25 - 75

A pastel on paper drawing by listed South African artist Ben Macala. Nicely framed under glass. Signed lower mid recto. Dimensions: H: 46.5" x L: 35.75" x H: 1"

---



**399: Antique Painted Persian Triptych Mirror Inlaid Wood (1830-1850) PROVENANCE**

USD 100 - 300

An antique painted Persian triptych mirror with gorgeous inlaid wood. The two doors open to reveal the mirror inside. Interior of doors are also decorated. Comes with letter of Provenance which appears to indicate this mirror once belonged to a Jewish family. See photos for more information. Dimensions: H: 21" x L: 14.5" x W: 1.75"

---



**400: Painted PERSIAN Wood ROOM DIVIDER SCREEN**

USD 50 - 100

A reticulated and painted Persian wooden room divider. Three panels. Same images on recto and verso. Folds. Dimensions: H: 53.5" x L: 60" x W: .75" Folded Dimensions: H: 53.5" x L: 20" x W: 2.5"

---



**401: After LePauille "The Pasha and His Harem" PERSIAN PAINTING Signed**

USD 50 - 100

A copy of "The Pasha and His Harem" painting by artist Francois Gabriel LePauille. This work is oil on canvas and signed lower right recto: Hicham B...? Nicely framed. Dimensions: H: 39.5" x L: 28" x D: 2"

---



**402: PERSIAN LADIES Oil/Canvas Painting Signed HICHAM B.**

USD 25 - 75

An original oil on canvas painting of two lovely Persian ladies. Nicely framed. Signed lower right recto Hicham B...? Dimensions: H: 25" x L: 29" x W: .5"

---



**403: VICTORIAN Ink Drawing PORTRAIT of a WOMAN**

USD 25 - 75

A Victorian ink on thin paper portrait of a woman. An original drawing. Unsigned. Conservation mounted to cardboard backing. Dimensions: H: 11.5" x L: 7.5" x W: 1/16" (flat)

---

## FINE & DECORATIVE ARTS AND DESIGN AUCTION



**404: REMBRANDT VAN RIJN "The Windmill" Etching**

USD 50 - 100

Rembrandt Van Rijn (Dutch 1606-1669) "The Windmill" etching. Signed in the plate and dated 1641. In plastic protective case with matting. Matted/Case Dimensions:H: 9.75" x L: 12.5" x 1/16 (flat)

---



**405: DUX SWEDEN Mid-Century Modern Round COFFEE TABLE**

USD 50 - 100

A Mid-Century Modern round coffee table made by Dux Furniture in Sweden. Retains original label on verso. Stamped Made in Sweden on bottom. Dimensions:H: 16" x L: 40" x W: 40"

---



**406: FANNIE MAE TURNER Harry S. Truman Pastel Drawing**

USD 25 - 75

A pastel on paper portrait of President Harry S. Truman by Independence artist Fannie Mae Turner (1918-2017). Nicely framed under glass. Dimensions:H: 27.5" x L: 23.5" x W: 1.5"

---



**407: FANNIE MAE TURNER Watercolor Painting Home of Harry S. Truman**

USD 25 - 75

An original watercolor on paper painting of President Harry S. Truman's home in Independence, MO. Signed lower right recto by Independence artist Fannie Mae Turner (1916-2017). Nicely framed under glass. Dimensions:H: 26.5" x L: 32.25" x W: 2"

---



**408: KLAUS KUNTSCHER Harry S. Truman Home Signed Lithograph**

USD 25 - 75

A lithograph print of Harry S. Truman's home in Independence, MO. Signed and dated in pencil lower right recto. By listed artist Klaus Kuntscher (20-21 C., Kansas City). Nicely framed under glass. Dimensions:H: 29.5" x L: 36.5" x W: 2"

---



**409: J.R. HAMIL Signed/# Lithograph Winter on the Plaza Kansas City**

USD 25 - 75

A signed and numbered lithograph of Winter on the Plaza in Kansas City by K.C. artist J.R. Hamil. Nicely framed under glass. Dimensions:H: 22.5" x L: 18" x D: 1"

---



**410: J.R. HAMIL Signed/# Lithograph Winter on the Plaza Kansas City**

USD 25 - 75

A signed and numbered lithograph of Winter on the Plaza in Kansas City by listed K.C. artist J.R. Hamil. Nicely framed under glass. Dimensions:H: 22.5" x L: 18" x D: 1"

---



**411: HARRY S. TRUMAN Photograph From Truman Library**

USD 25 - 50

An original black and white photograph of President Harry S. Truman at his desk in the white house. There is a note on verso describing the photo. This photo was de-commissioned from the Truman Library in Independence, MO. Nicely framed under glass; Dimensions:H: 12" x L: 15" x D: 1"

---

## FINE & DECORATIVE ARTS AND DESIGN AUCTION



**412: MIKE HIMOJOSA Pencil Drawing Portrait of President Harry S. Truman**

USD 25 - 75

An original pencil on paper portrait of President Harry S. Truman by artist Mike Himojosa. Signed lower right recto. Nicely framed under glass with original gallery label and artist info on verso. Dimensions:H: 17" x L: 14" x D: 1.25"

---



**413: DON DANAY "Fort Scott Dragoon" Signed/# Lithograph**

USD 25 - 75

A lithograph print entitled "Fort Scott Dragoon" by artist Don Daney. Pencil signed and numbered lower right recto. Nicely framed under glass. Dimensions:H: 20" x L: 16.75" x D: 1"

---



**414: POUL CADOVIUS for CADO Mid-Century Modern Modular Wall Shelving Unit**

USD 500 - 800

A modular wall shelving unit designed by Poul Cadovius for Cado. Circa 1960. Walnut wood with adjustable shelves. There are also hole links on the sides of the rails so you can add on to the unit on either side. Includes a small shelf, large shelf, book holder shelf, and drawer shelf. The shelves attach to the rails with metal hanging hooks. Dimensions:Overall: H: 6 foot x L: 3 foot x D: 16.15"  
Individual Dimensions:Rails: H: 6 foot x L: 1.5" x D: 1" Small Shelf: H: 4.5" x L: 32" x D: 8" Bookshelf: H: 11" x L: 32" x D: 7.5" Large shelf: H: 8" x L: 32" x D: 14.5" Drawer shelf: H: 8.5" x L: 32" x D: 16.5"

---